



FIVE QUESTIONS – ONE MISSION

Better Lives for Kentucky's People

MEETING AGENDA

Council on Postsecondary Education

April 23, 2010
CPE Offices
Frankfort, KY



Friday, April 23, 2010

8:30 a.m. – CPE Member Work Session

10 a.m. – CPE Meeting

Council on Postsecondary Education Meeting Room A

1024 Capital Center Drive

Suite 320

Frankfort, KY

See back cover for directions.



Members, Council on Postsecondary Education

Ellen Call, Louisville

Christopher J. Crumrine, Lexington (*student member*)

Glenn D. Denton, Paducah

Dan E. Flanagan, Campbellsville

Joe Graviss, Versailles

Terry Holliday, Commissioner of Education (*ex officio, nonvoting*)

Phyllis A. Maclin, Paducah

Nancy J. McKenney (*faculty member*)

Pam Miller, Lexington (*vice chair*)

Donna Moore, Lexington

Lisa F. Osborne, Carrollton

Paul E. Patton, Pikeville (*chair*)

Marcia Milby Ridings, London

Jim D. Skaggs, Bowling Green

Joseph S. Weis, Louisville

Joseph B. Wise, Louisville

Robert L. King, CPE President

AGENDA
Council on Postsecondary Education
Friday, April 23, 2010
10 a.m. (ET)
CPE Offices, Frankfort, KY

8:30-10 a.m. – Council Member Work Session

- *Kentucky P20 Innovation Lab: A Partnership for Next Generation Learning – Mary John O’Hair, dean of the University of Kentucky College of Education*
- *SkyTeach – Western Kentucky University*

Roll Call

Approval of Minutes

- February 10 Joint CPE/KDE/EPBSB Meeting 1
- February 11 CPE meeting 9

CPE President’s Report

1. 2010-12 Postsecondary Education Budget Update 19
2. Action: Tuition Parameters 23
3. Action: Renovation of UK Sanders-Brown Center on Aging 25
4. Action: Revision to Statewide Diversity Policy Directive 27
5. Action: Kentucky Virtual Library Strategic Plan 2010-2013 29
6. 2010 Legislative Session 33
7. Report from the Commissioner of Education
8. SB 1 Unified Strategic Plan for College and Career Readiness 35
9. Licensure and Accreditation Update 37
10. 2011-15 Strategic Agenda Development Update 69
11. 2008-09 Accountability Report 71
12. Transfer Update: New Definition of Transfer and 2010 Transfer Student Survey 73

Reports from the Institutions 75

Other Business

Next Meeting – May 20-21, University of Louisville

Adjournment

**KENTUCKY BOARD OF EDUCATION,
COUNCIL ON POSTSECONDARY EDUCATION AND
EDUCATION PROFESSIONAL STANDARDS BOARD
FEBRUARY 10, 2010
JOINT MEETING**

**KENTUCKY COMMUNITY AND TECHNICAL COLLEGE
SYSTEM OFFICES
300 NORTH MAIN STREET
VERSAILLES, KENTUCKY**

SUMMARY MINUTES

Wednesday, February 10, 2010

The Kentucky Board of Education (KBE), Council on Postsecondary Education (CPE) and Education Professional Standards Board (EPSB) met on February 10, 2010, for a joint meeting at the Kentucky Community and Technical College System (KCTCS) offices in Versailles, Kentucky and conducted the following business:

MEETING OPENING AND WELCOME

KCTCS President Michael McCall welcomed the three boards and the audience to the meeting. He indicated KCTCS was glad to host the historic event and said that education overall is having a positive impact across the state. McCall thanked CPE President Robert King for asking KCTCS to host the meeting and noted he was delighted to have the Governor here to be part of the meeting.

REMARKS BY GOVERNOR STEVEN L. BESHEAR

Commissioner Terry Holliday of the Kentucky Department of Education (KDE) stated that he would be serving as master of ceremonies at tonight's meeting and shared that he was extremely honored to be selected as Kentucky's commissioner of education. He commented that in his experience in the state he has been impressed with the work of all of the education partners on Senate Bill 1 and particularly by the collaboration among the three boards, Representative Carl Rollins, Senator Ken Winters and the General Assembly. Holliday then noted that one of his highlights after coming to Kentucky has been getting to know Governor Steve Beshear and experience his commitment to education. He asked the Governor to come forward to make his remarks.

Governor Beshear made the following points:

- Kentucky has experienced several historic moments in an effort to move education forward.

- Tonight's meeting is one of those moments where the three education boards have come together to move Kentucky education forward.
- In 1990, the state's leaders made a promise through education reform that if students worked hard, they would be prepared for success in the world. From these efforts, Kentucky's education system made significant progress; however, it still has farther to go.
- Last summer, I signed an agreement for the state to participate in the development of the common core standards. Today, Kentucky is showing its leadership by being the first to adopt these standards with the ultimate goal being that the K-12 system will prepare students for success in higher education and the world.
- The new standards will raise the bar and meet the requirements of Senate Bill 1. They will provide more consistency nationally, are benchmarked with international standards and are clearer and more easily communicated so that all will know what is expected of students.
- What is done today cannot stand alone. We must commit funds, focus and energy to move schools ahead.
- Commissioner Holliday and I have formed the Transforming Education in Kentucky Task Force and my budget submission was designed to protect education.
- Congratulations to all those involved in this meeting tonight to ensure our kids have a high quality education.

VIDEO MESSAGE FROM U.S. SECRETARY OF EDUCATION ARNE DUNCAN

Commissioner Holliday reported that due to adverse weather conditions and the federal government not working, the video was not able to reach the state for use tonight. He noted that it is ready and as soon as it is received, it will be posted on the Web sites of the three agencies for viewing. Holliday then, on behalf of Secretary Duncan, offered congratulations to the three boards for their support of the new standards.

CALL TO ORDER AND ROLL CALL

Chair Joe Brothers called the KBE to order and asked Mary Ann Miller to call the roll. Present for the meeting were C.B. Akins, Kaye Baird, Joe Brothers, Dorie Combs, Jeanne Ferguson, Judy Gibbons, Billy Harper, Doug Hubbard, Austin Moss, Brigitte Ramsey and Robert King. Absent was David Karem.

Chair Paul Patton then called the CPE to order and asked Phyllis Bailey to call the roll. Present for the meeting were Ellen Call, Chris Crumrine, Glenn Denton, Dan Flanagan, Joe Graviss, Terry Holliday, Phyllis Maclin, Nancy J. McKenney, Pam Miller, Donna Moore, Lisa F. Osborne, Paul E. Patton, Jim Skaggs, Joe Weis and Joe Wise. Absent was Marcia Milby Ridings.

Next, Chair Lorraine Williams called the EPSB to order and asked Ashley Abshire to call the roll. Present for the meeting were Lonnie Anderson, Frank Cheatham, Cathy Gunn, Mary

Hammons, Terry Holliday, Robert King, Greg Ross, Becky Sagan, Sandy Sinclair-Curry, Zenaida Smith, Bobbie Stoess, Tom Stull, Mark Wasicsko, Cassandra Webb and Lorraine Williams. Absent were Lynn May and Cynthia York.

REMARKS BY EDUCATION COMMITTEE CHAIRS

Commissioner Terry Holliday moved on to the next agenda item and stated that this meeting would not have occurred without the passage of Senate Bill 1 (SB 1). He explained that SB 1 directs collaboration among the three boards and their respective agencies. Holliday said that two of the legislators that were key to the passage of SB 1 and House Bill 176 (within eight days), Representative Carl Rollins and Senator Ken Winters were present and he asked them both to say a few words about the standards and tonight's meeting.

Representative Rollins commented that the meeting has brought together a distinguished group of policy makers and indicated he was honored to be here as part of the historic meeting. Rollins emphasized that the adoption of national standards is a big step forward for Kentucky's education system.

Senator Winters then spoke and congratulated the three boards for coming together because he believes the team effort on this work will impact the state forever. He felt tonight was historic and that adoption of the new standards is a major step educationally as well as an integral part of SB 1. Winters said that in addition to new standards, SB 1 will require implementation of a new assessment and accountability system that will evaluate individual students and not just schools. Although he stated that the adoption of the new English/language arts and mathematics standards is a matter about which we rejoice, Winters emphasized that assistance will be needed in adopting new standards in the other curricular areas. He noted that he would be talking with the National Governors Association and the Council of Chief State School Officers about this matter due to the necessity of being able to compare Kentucky student performance with students from across the nation. Winters concluded by expressing appreciation for being part of the SB 1 Committee and for seeing all three boards sitting together to make this event happen.

JOINT PRESENTATION REGARDING THE NEW KENTUCKY CORE ACADEMIC STANDARDS

At this point, President Robert King, Commissioner Terry Holliday and Executive Director Phillip Rogers came forward to the presenters' table to address the three boards about the new standards and present the resolution that the boards were being asked to adopt.

President Robert King of the CPE spoke first and made the following points:

- He joined Michael McCall in welcoming everyone to the meeting. Recognition was given to several college and university presidents and higher education officials, Bob Sexton of the Prichard Committee, Dave Adkisson of the Kentucky Chamber of Commerce, legislators, Acting Secretary of Education Joe Meyer and Mary Ann

Blankenship of the Kentucky Education Association as being present and all were thanked for their support of the work that is being recognized tonight.

- It was emphasized that the heads of the three agencies have developed an extraordinary relationship and have been given the opportunity to truly collaborate in implementing the requirements of SB 1. Staffs of the three agencies have joined together and put turf issues aside.
- Sue Cain, John DeAtley and Aaron Thompson from the CPE and higher education faculty worked with teachers and KDE staff to assure that the standards meet the needs that exist in Kentucky.
- The standards are sometimes characterized as national standards but they are really ones developed by states and for states. In the latest communication between the national teams and our state teams, all of Kentucky's recommendations were reflected in the draft document. Thus, what the boards are being asked to support are Kentucky-specific standards.
- Professional development will be central to the success of the standards work and thus teachers must be provided with the needed support to bring the standards to life.
- Higher education desires to have more students enrolled and wants them all to succeed.

Dr. Phillip Rogers of the EPSB then shared the following comments:

- Members of the ESPB were thanked for their participation in the meeting as well as those staff members that were present.
- It was pointed out that the majority of the EPSB members are practicing teachers or administrators, representatives of groups that are all part of the standards work.
- Accolades were given to the other two agency heads for the working relationship that has developed and Rogers' role in their group was characterized as being more of a dreamer because SB 1 caused him to visualize what it would take to reach the goal of every student ready for college or work.
- The collaboration across the agencies and new ideas has led to believing that Kentucky has one education system with the resolve that business will be conducted with this principle in mind.
- Far too many students do not succeed in college, high school or work. Adopting and supporting the standards is the easy part. Incredible changes in teacher preparation programs, high-quality professional development, and a focus on the working conditions of teachers are all critical steps that will be necessary for SB 1 to work.
- Thank you for the work to date and for the work that will occur in the days to come.

The final speaker of the group was Commissioner Terry Holliday of the KDE. He stated the following:

- Staff members from the KDE were thanked for their intensive work on the new standards.
- It was noted that the winds of change are blowing across the country and that these winds must be harnessed to improve education for our children.

- Those who are interested in how these changes will be accomplished were asked to read Kentucky's Race to the Top application. As part of this work, the standards must be translated into understandable language, which will require professional development.
- The belief that this work will make a difference in the children of our state over the long term was put forth and the challenge for everyone to get to work to implement the standards was made.

REMARKS FROM REVIEWERS REGARDING THE NEW KENTUCKY CORE ACADEMIC STANDARDS

Next, Commissioner Holliday asked two people who had served on the review teams for the standards, Dr. Brenda Overturf and Charlie Newquist, to come forward and address the boards.

Dr. Brenda Overturf, professor in the Education Department – Teaching and Learning at the University of Louisville, provided her thoughts with regard to the review of the standards by Kentucky teachers and higher education officials as follows:

- She was part of a group that was invited to review the college readiness standards in September and also part of a similar group that last month reviewed the K-12 English/language arts standards.
- The task of the group was to review the standards and ensure these were appropriate for Kentucky.
- The new standards will provide an understanding across the states of what students need to know and be able to do and will allow curriculum mapping.
- Although there were revisions made, they were on the right track and many of the group's suggestions appear in the current draft.
- The belief was put forth that the common core standards will provide standards that are deeper, clearer, and more focused.

The second speaker was Charlie Newquist, mathematics teacher from East Jessamine Middle School in Nicholasville. He shared these thoughts:

- It was an honor to be part of the standards review process and he served on the mathematics group from the beginning of the process.
- Every time new information was received from the national team, the state group could see that its concerns were being addressed.
- The standards are rigorous but reachable.
- It is exciting as a teacher to know what is expected and appreciation was expressed for being a part of the work.

PASSAGE OF JOINT RESOLUTION BY KBE, CPE, AND EPSB BOARDS

Commissioner Holliday referred the three boards' attention to the joint resolution found in the meeting's Agenda Book and read it aloud as follows:

***“RESOLUTION SUPPORTING THE ADOPTION AND
INTEGRATION OF THE KENTUCKY CORE ACADEMIC
STANDARDS ACROSS KENTUCKY’S EDUCATION SYSTEM
BY
THE KENTUCKY BOARD OF EDUCATION,
COUNCIL ON POSTSECONDARY EDUCATION AND
EDUCATION PROFESSIONAL STANDARDS BOARD
COMMONWEALTH OF KENTUCKY***

Whereas, The Kentucky Board of Education, Council on Postsecondary Education and Education Professional Standards Board are committed to the continual improvement of the educational system for all students; and

Whereas, Senate Bill 1 was passed in the 2009 regular session of the Kentucky General Assembly and requires collaboration among the boards and staffs of the Kentucky Department of Education, Council on Postsecondary Education and Education Professional Standards Board to revise Kentucky’s academic content standards, train local district teachers and administrators on their implementation and train faculty and staff in all of the teacher preparation programs in the application of the revised academic standards; and

Whereas, The Senate Bill 1 Steering Committee has supported the three agencies’ collaboration with the Council of Chief State School Officers and National Governors Association Center for Best Practices in the Common Core Standards project; and

Whereas, Kentucky’s Governor and Chief State School Officer signed a Memorandum of Agreement with the aforementioned organizations to participate in the development and adoption process of national Common Core Standards in English/language arts and mathematics for grades K-12; and

Whereas, The drafting process for the standards has included broad input from Kentucky teachers, administrators, higher education officials, education partners, the public, staffs of the three participating agencies, a national validation committee and national organizations that has resulted in the current standards document; and

Whereas, As required by Senate Bill 1, the Common Core Standards in English/language arts and mathematics focus on critical knowledge, skills and capacities needed for success in the global economy; reflect fewer, but more in-depth standards to facilitate learning; communicate expectations more clearly and concisely to teachers, parents, students and citizens; consider international benchmarks; and ensure that the standards are aligned from elementary to high school to postsecondary education so that students can be successful at each educational level;

NOW, THEREFORE, be it resolved by the Kentucky Board of Education that the current draft of the Common Core Standards, to be known as the Kentucky Core Academic Standards for English/language arts and mathematics, was adopted by the board on February 10, 2010, and be it further resolved by the Kentucky Board of Education, Council on Postsecondary Education and Education Professional Standards Board that their respective agencies shall integrate the final standards into their work and processes to ensure that all Kentucky students experience a successful and productive future.

Done in the city of Versailles, Kentucky, this tenth day of February, in the year Two Thousand Ten."

Commissioner Holliday shared that the staffs of the three respective agencies are recommending approval of the joint resolution.

KBE Chair Joe Brothers then made the following comments:

- Earlier today, the Kentucky Board of Education approved the preliminary version of the Core Academic Standards to be incorporated by reference into state regulation.
- We are engaging in an historic event this evening – one that will have unprecedented and positive effects for years to come.
- The adoption of the preliminary Core Academic Standards meets a major mandate of Senate Bill 1 and sets us on the road to a new era for public education.
- Thanks to all of you for your collaborative efforts on this project. I'm proud to be a part of this work, and I know the other members of the Kentucky Board of Education are excited and ready to move forward.
- A motion and second from Kentucky Board of Education members are needed to adopt the joint resolution.

Doug Hubbard moved to adopt the joint resolution and Judy Gibbons seconded the motion. In a roll call vote, it carried unanimously.

CPE Chair Paul Patton then commented as follows:

- This is an historic day and what we are discussing impacts the economic future of Kentucky.
- At one time, Kentucky was a leader nationally in many fields but lost its way and went to the bottom in most rankings. Fortunately, 20 years ago education reform was implemented and the state committed to being a leader. It takes a long time for change to become evident but if one looks back, the difference is visible.
- This action relative to the new standards represents another milestone in the state's educational progress.
- It is the responsibility of the Governor and General Assembly to give us direction and the authority to do the job, but it is up to us to get the job done.
- The classroom teacher will be the level at which the important work must occur.
- We at CPE are proud to be part of this work and a motion and second are needed to adopt the joint resolution.

Dan Flanagan moved to adopt the joint resolution and Glenn Denton seconded the motion. In a roll call vote, the motion carried unanimously.

Next, EPSB Chair Lorraine Williams stated the following:

- Being from New York and Houston, in my experience Kentucky was known for leading change.
- Today, another bridge was crossed and Kentucky is bringing together a narrowed focus and deepened level of learning to reduce dropouts. It is the beginning of a new era.
- As state board members, we must remember that our work is to support the work of our respective agencies and that we have a common agenda.
- A motion and second to adopt the joint resolution are needed from the EPSB.

Zenaida Smith moved to adopt the joint resolution and Lonnie Anderson seconded the motion. In a roll call vote, the motion passed unanimously.

ADJOURNMENT

Commissioner Holliday thanked everyone for attending and announced that a reception would follow in the lobby. He then asked each board to officially adjourn.

For the Kentucky Board of Education, Judy Gibbons moved to adjourn and C.B. Akins seconded the motion. The motion carried.

For the CPE, Phyllis Maclin moved to adjourn and Joe Weis seconded the motion. The motion carried.

Then, Cathy Gunn of the EPSB moved to adjourn and Zenaida Smith seconded the motion. The motion carried.

The meeting of all three boards was officially adjourned.

MINUTES
Council on Postsecondary Education
February 11, 2010

The Council on Postsecondary Education met Thursday, February 11, 2010, at 10 a.m. at the Council offices in Frankfort, Kentucky. Chair Paul Patton presided.

ROLL CALL

The following members attended: Ellen Call, Chris Crumrine, Glenn Denton, Dan Flanagan, Joe Graviss, Phyllis Maclin, Nancy McKenney, Pam Miller, Donna Moore, Lisa Osborne, Paul Patton, Marcia Ridings, Jim Skaggs, and Joe Wise. Terry Holliday and Joe Weis did not attend.

APPROVAL OF MINUTES

The minutes of the November 2009 meeting were approved.

2010-12 EXECUTIVE
BUDGET
RECOMMENDATION
SUMMARY

Representative Arnold Simpson, chair of the House Budget Review Subcommittee on Postsecondary Education, was not able to attend the meeting due to a scheduling conflict.

On January 19, 2010, Governor Beshear released his 2010-12 Executive Budget recommendation which includes \$780 million in revenue from video lottery terminals to help protect core priorities including SEEK (the primary classroom funding formula), Medicaid, and public safety. The Executive Budget proposed cuts to most state agencies of 2 percent, which is in addition to the 20 to 25 percent budget reductions received over the last two years. In his budget address, the Governor stated that, if additional federal funds become available, these additional resources should be used to increase teacher and state employee pay, restore cuts to higher education and the Department of Community-Based Services, and rebuild Kentucky's rainy day fund.

John Hayek, the Council's vice president for finance, gave an overview of key items in the Executive Budget related to postsecondary and adult education.

Institution Operations

- The Executive Budget recommends a straight-lined budget for FY11, through a combination of General Funds (\$979 million) and federal stimulus funds (\$57 million in FY11), and a 2 percent reduction in FY12.
- Technical adjustments were made for debt service and the UofL hospital contract, but not for KSU's land grant funds or for M&O on new facilities.

Capital Investments

- The Executive Budget includes General Fund debt service for \$584 million in state-funded capital projects, including the highest priority project for each university and the highest two priorities for KCTCS.
- The recommendation also allows the institutions to fund with agency bonds another \$323 million in capital projects.

CPE Agency Funds (Statewide Coordination and Statewide Educational Programs and Services)

- The Executive Budget proposes a 2 percent reduction (\$878,000) to CPE agency funds in FY11 and straight-line appropriations in FY12. Unfortunately, the General Fund support for Kentucky Adult Education, which was exempted from several prior cuts, was included as part of CPE's total budget reduction.
- The Executive Budget recommendation does increase the number of veterinary spaces to 164 from 154 in the contract spaces program in FY11 and FY12 and provides for increases in tuition in the program.
- Approximately a half-year of debt service totaling \$28 million for postsecondary education capital projects is included in FY12.
- The Executive Budget recommendation does include \$4.7 million in FY11 to support SB 1 (2009) implementation and \$1.8 million in FY12.

Financial Aid

- The Executive Budget dedicates 100 percent of the value of the lottery revenues for student financial aid.
- The recommendation fully funds the KEES program at \$94 million in FY11 and \$99 million in FY12.
- The Executive Budget increases funding to Kentucky's need-based financial aid program, the College Access Program (CAP), from \$64 million to \$73 million in FY11 and \$76 million in FY12.
- The Kentucky Tuition Grant (KTG), need-based aid specifically for students who attend independent colleges and universities, is straight-lined at \$33 million in FY11 and \$34 million in FY12.
- For the first time, student financial aid is proposed to be funded with bond funds for FY11 and FY12 versus lottery proceeds.

Dr. Hayek said that the House budget recommendation should be available within the next few weeks and noted that the Council staff and the institutions have had a number of successful presentations to the House budget committees.

2010 LEGISLATIVE
SESSION

The most recent chart listing bills that relate to postsecondary education was distributed.

CAPITAL PROJECTS

RECOMMENDATION: The staff recommended that the Council approve the request of Eastern Kentucky University to construct a radio transmission and cell phone tower on the university's main campus with \$750,000 of federal funds and \$750,000 of institutional funds. The total project scope is \$1,500,000.

This project will construct a transmission tower that will collaboratively serve ECU, prospective cell leases, the Kentucky State Police, and other users. The project, scheduled to be completed by 2012, requires interim authorization because the federal grant has become available after the 2010-12 budget request process was completed in November 2009 and to allow the university time to properly design the tower construction, go through the project bid process, award a contract, and complete the work. The project will result in an improvement to state-owned property with ownership of the improvements to accrue to the university at completion.

Funding for the project will come from a federal grant and institutional restricted funds. The university confirmed that the federal grant funds are available to implement the project. The cost of operations and maintenance for this project is provided by the university and does not represent a demand on the General Fund. The university does not anticipate debt financing any portion of this project. The ECU Capital Project Management Division will implement the project in collaboration with the Division of Facilities Management of the Finance and Administration Cabinet, and the university will pay the operations and maintenance.

MOTION: Mr. Flanagan moved that the project be approved. Ms. Miller seconded the motion.

VOTE: The motion passed.

RECOMMENDATION: The staff recommended that the Council approve the request of ECU to construct a hotel on the university's main campus with \$40,000,000 of private/other funds. The total project scope is \$40,000,000.

This project will construct a 175,000 square foot facility which will house various types of space to serve academic, sports, and performing arts activities. The project would be located on university land that would be leased to a private developer who would pay for building the project and its operating costs. The project is scheduled to be completed by 2012. The project requires interim authorization because the federal grant has become available after the 2010-12 budget request process was completed and to allow the university time to properly design the hotel construction, go through the project bid process, award a contract, and complete the work. The project will result in an improvement to state-owned property with ownership of the improvements to accrue to the university.

Funding for the project will come from funds provided through a public/private partnership, and the funds are available to implement the project. The cost of operations and maintenance for this project is provided by the university and does not represent a demand on the General Fund. The university does not anticipate debt financing any portion of this project. The ECU Capital Project Management Division will implement the project in collaboration with the Division of Facilities Management of the Finance and Administration Cabinet, and the university will negotiate the terms of the operations and maintenance with the prospective lessee. Before the university can advertise a request for proposals for the project, state law requires that the project be included as a line item in the state budget, even if no state funds are used. At its January 2010 meeting, the ECU Board of Regents authorized the university to request that the project be included in the state budget.

MOTION: Ms. Ridings moved that the recommendation be approved. Ms. Miller seconded the motion.

Mr. Wise raised concerns that the use of a private developer would allow projects to proceed outside the state's prevailing wage law. Some Council members disagreed, expressing concern that putting restrictions on the university would impede its negotiations with developers.

AMENDMENT TO MOTION: Mr. Wise amended the motion to reflect that Kentucky prevailing wage will be included in the construction of the project. Ms. Moore seconded the amendment to the motion.

VOTE ON AMENDMENT: The amendment to the motion failed with four members voting yes and ten members voting no.

Mr. Denton requested that ECU share a copy of the project RFP when available.

VOTE ON ORIGINAL MOTION: The motion passed with no opposing votes.

RECOMMENDATION: The staff recommended that the Council approve, contingent on favorable action by the University of Kentucky Board of Trustees at its March 2010 meeting, the request of UK to construct the Center for Applied Energy Research Laboratory Building #2 on the Spindletop Energy Research Campus with \$11,832,685 from the National Institute of Standards and Technology, \$7,000,000 from the Kentucky Energy and Environment Cabinet, and \$944,288 of institutional funds. The project scope is \$19,776,973.

Normally, the Council considers capital projects after the institution governing board has formally approved the project. But the guidelines for the use of the \$11,832,685 in federal funds – from the American Recovery and Reinvestment Act (2009) – require that implementation of the project begin in a very short timeframe. To meet the timeframe the project needs to be under contract by late March. Because the UK Board of Trustees does not meet until March 9, President Todd requested that the Council consider the project contingent on UK board approval.

MOTION: Mr. Crumrine moved that the recommendation be approved. Ms. Miller seconded the motion.

VOTE: The motion passed.

NEW PROGRAMS

RECOMMENDATION: The staff recommended that the Council approve the Bachelor of Science in Military Leadership (CIP 29.0101) proposed by Western Kentucky University.

MOTION: Mr. Crumrine moved that the program be approved. Ms. Miller seconded the motion.

VOTE: The motion passed.

RECOMMENDATION: The staff recommended that the Council approve the Master of Science in Instructional Design (CIP 13.0501) proposed by Western Kentucky University.

MOTION: Mr. Wise moved that the program be approved. Ms. Osborne seconded the motion.

VOTE: The motion passed.

RECOMMENDATION: The staff recommended that the Council approve the Master of Science in Chemical Manufacturing Management (CIP 41.0301) proposed by Murray State University.

MOTION: Mr. Denton moved that the program be approved. Ms. Moore seconded the motion.

VOTE: The motion passed.

RECOMMENDATION: The staff recommended the approval of the proposal from Morehead State University to offer an Ed.D. in Educational Leadership contingent upon the same conditions as previously approved Ed.D.'s at comprehensive universities:

- (1) Successful annual review of progress conducted by an external review committee and a full review at the end of three years to ensure the viability, sustainability, and effectiveness of the program.
- (2) Evidence in the annual review that the program is on track to be financially self-sufficient by the time it is fully implemented.
- (3) The Council directs each institution granting an Ed.D. to collect and report to the Council staff information on the placement of all of its graduates. The Council also directs each institution awarding an Ed.D. to evaluate whether these educational leaders have helped to improve student achievement in Kentucky. Finally, the Council directs the Council staff to incorporate information from these institutional reports in reports to the Council (e.g., the High School Feedback Report) and to the legislature (e.g., the annual accountability report).

Dr. Aaron Thompson, the Council’s interim vice president for academic affairs, said that a review committee conducted an interview with representatives from the campus and found that the proposed program stresses regional stewardship and focuses on improving student achievement and the economy in their area of geographic responsibility. It also focuses on the long-term strengthening of the workforce through improvements in the educational system at all levels, and the initial resources invested in this program are an investment in the future of the region. The review committee asked MoSU to respond to several concerns, and the university amended its original proposal to include this information. The process resulted in a program that addresses the needs of MoSU’s region, as well as the needs of Kentucky as a whole. While the program will be expected to show progress in transferability and sustainability, the institution made a diligent and committed effort to address the issues of concern expressed by the Council throughout the process. The institution has indicated that given the priority they have placed on this program they can, even in the current difficult financial climate, support its launch.

MOTION: Ms. Osborne moved that the program be approved. Ms. Miller seconded the motion.

VOTE: The motion passed.

COMMISSIONER OF
EDUCATION REPORT

A report from Commissioner Holliday was included in the agenda materials.

RACE TO THE TOP
FUND

Mr. King said that related to the passage of the common core standards at the joint meeting last evening is the creation by the federal government of the Race to the Top Fund. The money is available through a competitive process, and Kentucky is one of the 40 states applying for the money. The expectation is that a relatively small number of states will receive funds in the first round of the competition. The responsibility for developing Kentucky’s application rested with the Kentucky Department of Education but involved a great deal of input from the colleges and universities and the

Council staff. The level of collaboration and integration between higher education and K-12 resulted in a strong application. States will be notified if they are finalists for the first round of funding in late March. The first awards will be made in April.

KENTUCKY
TRANSFER PLAN

The Council staff presented an update on the progress toward implementation of the Kentucky Transfer Project (an action plan developed by the Council of Chief Academic Officers and Council staff to ensure student mobility across Kentucky's postsecondary educational system) and how this agreement aligns with House Bill 160, the transfer bill under consideration in the current legislative session. Among other strategies, the Kentucky Transfer Plan includes implementation of an electronic system to offer unified course articulation and transfer information to meet the needs of students, transfer advisers, registrars, faculty, and other stakeholders. This system will clarify the sequence of courses students should take to maximize transfer of credit for the most common degree programs, as well as indicate whether a course will count toward general education or major requirements.

CPE PRESIDENT'S
REPORT

The CPE President's Report was distributed for information.

ELECTION OF
CPE CHAIR AND
VICE CHAIR

RECOMMENDATION: On behalf of the Nominating Committee, Mr. Denton recommended that Paul Patton be elected as chair and Pam Miller be elected as vice chair to serve a term ending January 31, 2011.

Mr. Denton said that the only reason that a change is being recommended for the vice chair position is that Mr. Flanagan is term limited. According to the Council's bylaws, the officers are limited to three consecutive one-year terms.

MOTION: Mr. Flanagan moved that the recommendation be approved. Ms. Maclin seconded the motion.

VOTE: The motion passed.

Governor Patton said that he is again honored to continue with his responsibility as chair. He thanked Mr. Flanagan for his work and involvement in Council activities during his tenure as vice chair.

Ms. Miller thanked the Council for allowing her to serve as vice chair. She said that she is very proud of Kentucky in where the state has come from and where it is going.

Mr. Flanagan thanked the Council for the opportunity to have served as vice chair for three years. He said that it is quite obvious that the Council has certainly stepped up and moved in the right direction under the leadership of Governor Patton and Bob King. He said he looks forward to continuing to work with the Council.

KYVL STRATEGIC PLAN,
LICENSURE, 2009
ENROLLMENT REPORT

Due to the length of the meeting, these items were postponed to the April 23 meeting – KYVL strategic plan, licensure and accreditation update, and fall 2009 enrollment report.

2010-11 TUITION
SETTING PROCESS

RECOMMENDATION: The staff recommended that the Council approve the Tuition and Mandatory Fee Policy and 2010-11 Tuition Setting Process documents that provide a framework for establishing public postsecondary tuition and fees for academic year 2010-11.

At the November 2009 Council meeting, staff submitted draft Tuition and Mandatory Fee Policy and 2010-11 Tuition Setting Process documents to Council members for review and discussion. Since that time, staff has continued to work with institutional chief budget officers to finalize the tuition policy and process documents. These documents will guide the 2010-11 tuition and fee setting process.

The proposed tuition and fee policy is the same version that was submitted to the Council at its November 2009 meeting and is the same that was used in 2009-10. The fundamental objectives of the tuition policy include funding adequacy, shared benefits and responsibility, affordability and access, attracting and importing talent, and effective use of resources.

The process for determining tuition and fee parameters and bringing rate proposals for Council approval will be similar to the process used in 2009-10. A major goal of the process is to provide ample time for stakeholder discussion and for exchange of policy relevant information among Council staff, institutional presidents, chief budget officers, and Council members. This exchange of data and information will lead to a better understanding of key tuition issues and provide increased opportunity for feedback and direction, before taking final action on tuition rates.

It is anticipated that the Council will take action on recommended tuition parameters at the April 23 meeting and approve each institution's proposed tuition and mandatory fee rates at the May 21 meeting.

Several institutions have indicated an interest in moving from a flat-rate tuition billing structure to a per-credit-hour billing approach in 2010-11.

MOTION: Ms. Miller moved that the recommendation be approved. Ms. Moore seconded the motion.

VOTE: The motion passed.

2011-15 STRATEGIC
AGENDA
DEVELOPMENT

Ms. Osborne, chair of the Strategic Agenda Work Group, reported that the group is working to develop a timeline for developing the plan. Pipeline issues are being discussed, and the group plans to meet with representatives

from the Kentucky Department of Education and the Economic Development Cabinet to discuss ways to align the agency plans. Comments and participation from other CPE members are always welcome.

CEO REPORT &
DIVERSITY PLANNING

A report on the activities and initiatives being carried out by the Committee on Equal Opportunities was included in the agenda materials.

The CEO continues to invite input and comment from external parties to inform the development of the statewide approach to diversity planning. A draft of the most recent work related to diversity planning has been shared with internal and external organizations. At its February meeting, the CEO anticipates hearing from those interested in providing commentary on the most recent draft or additional ideas regarding the overall development of a diversity plan for postsecondary education in Kentucky.

Since the November report to the Council, the idea of developing a postsecondary education diversity policy, including a framework for institutional plan development, has come to light and has been explored as a more appropriate means of communicating the Commonwealth's approach to diversity planning for postsecondary education.

Mr. King said that, as the working group has been working to develop its response to the language that was in the resolution that CPE enacted in September 2008, it became clear that the group was struggling to develop an approach for a statewide diversity plan. The work that was going on was caught between an appropriate role that the Council would play at the state level and appropriate flexibility that ought to reside at the campuses. The policy should require that every campus have a plan and that those plans should address enrollment, employment, student life, and the elimination of achievement gaps. He said it would be helpful for the Council to amend its initial directive to develop a policy rather than a plan.

Ms. Osborne clarified that this action will not negate all of the work that has been done by the CEO to this point. That work will roll over into a policy instead of a plan.

MOTION: Mr. Crumrine moved that the work group be directed to develop a set of policies to guide the development of institutional diversity plans. Ms. Osborne seconded the motion.

VOTE: The motion passed.

COMMITTEE
APPOINTMENTS

Governor Patton appointed these members to serve with him on the Council's Executive Committee - Ms. Miller, Mr. Flanagan, Mr. Denton, and Mr. Skaggs.

REPORTS FROM
INSTITUTIONS

Reports from the institutions were included in the agenda book.

NEXT MEETING

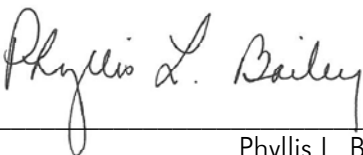
The next Council meeting is April 23, 2010.

ADJOURNMENT

The meeting adjourned at 12:35 p.m.



Robert L. King
CPE President



Phyllis L. Bailey
Senior Associate, Executive Relations

CPE MEMBER
WORK SESSION

The Council members met February 11, 2010, at 8:30 a.m. for a CPE member work session. Dr. Curtis Bonk from Indiana University gave a presentation about "The World is Open: How Web Technology is Revolutionizing Education."

Council on Postsecondary Education
April 23, 2010

2010-12 Postsecondary Education Budget Update

At the time of this writing, the Conference Committee Budget Recommendation for 2010-12 was not available. Additional information may be available by the meeting date.

However, as a point of reference, highlighted below is a summary of the key differences between the Senate and House versions of the budget for postsecondary education.

The Senate version of the budget provides less operating funds and no capital investments for postsecondary education institutions. CPE's General Funds are treated like other state agencies with a few exceptions, including smaller cuts for Kentucky Adult Education and the Contract Spaces Program.

Institution Operations

- In FY11, the Senate recommends a net base of \$989 million for the institutions (\$931.3 million in net General Funds plus \$57.3 million in ARRA federal stimulus funds), which is the same net base proposed by the House, and represents a 1.4 percent reduction (or about \$14 million) from the current FY10 net base of \$1.006 billion (\$935.7 million in net General Funds plus \$70.0 million in ARRA funds) after adjusting for new line-item appropriations and transfers (i.e., a net adjustment of \$3.1 million).
- In FY12, the Senate recommends net General Funds of \$979 million which represents a 2.4 percent reduction (or about \$24 million) from the FY10 net base level, after adjusting for line-item appropriations and transfers, and is 1.5 percent lower (or about \$15 million) than the \$993 million net General Funds proposed by the House, which represents a .9 percent reduction (or about \$9 million) from the FY10 base.
- If the Senate Budget is enacted, Kentucky's public postsecondary institution net General Fund base in FY12 will be about \$100 million less than its enacted net General Fund base in FY08, equating to a 9.3 percent reduction in net General Funds since FY08.
- As a reminder, the Executive Budget straight-lined state support in FY11 and reduced it by 2 percent in FY12.
- Similar to the Executive and the House Budgets, the Senate Budget includes \$57 million in federal stimulus funds in FY11 and replacement of these funds with General Funds in FY12.
- Similar to the Executive and House Budgets, the Senate includes technical adjustments for debt service and the UofL hospital contract, but no adjustments for M&O or for KSU's land grant funds.

Capital Investments

- The Senate Budget includes no capital projects supported by General Funds. This compares to \$95 million in capital projects included in the House Budget and \$584 million in capital projects included in the Executive Budget recommendation.
- The Senate Budget also includes new language that directly communicates to public postsecondary education institutions that there should be no expectation for M&O on capital projects built with agency bonds, restricted funds, or other funds. Implicit in the exclusion of General Funds from the new language is that institutions should continue to expect M&O on state-funded capital projects.
- The Senate and House Budgets continue language that the governing board of a public postsecondary institution shall certify in writing prior to issuance of agency bonds that the project (a) will generate sufficient funds to retire the debt and pay ongoing expenses and (b) will not result in an increase in tuition. This information must be submitted to the president of CPE, the Finance and Administration Cabinet, and the Capital Projects and Bond Oversight Committee. This language was first included in HB 406 of the 2008-10 biennium.
- The Senate Budget recommendation does allow the institutions to fund with agency bonds an additional \$345 million in capital projects versus \$396 million in the House Budget and \$323 million in the Executive Budget.

CPE General Funds (Statewide Coordination and Statewide Educational Programs and Services)

- The Senate Budget cuts CPE General Funds by an additional 1.5 percent from the Executive Budget in FY11 and an additional 1 percent in FY12. Overall, the Senate Budget proposes a 3 percent reduction (\$1.4 million) to CPE General Funds in FY11 and a 3.5 percent cut (\$1.7 million) in FY12 (excluding additional funds for SB 1 implementation).
- However, once line-item appropriations are considered, the Senate Budget equates to a reduction of CPE General Funds of 5.3 percent in FY11 and 6.3 percent in FY12.
- Similar to the Executive and House Budgets, the Senate Budget includes language to guarantee an increase in the number of veterinary spaces in the Contract Spaces Program from 154 to 164 in FY11 and FY12. However, the Senate Budget actually reduces the amount of General Funds available to pay for these spaces by 1.5 percent in FY11 and 1 percent in FY12.
- Similar to the Executive and House recommendations, the Senate does include new General Funds to help implement SB 1 (2009). However, these funds are reduced by 1.5 percent in FY11 and 1 percent in FY12 compared to the Executive and House levels.
- Additional Executive Branch “efficiencies” built into the House Budget and increased in the Senate Budget will likely result in additional cuts to CPE General Funds (including programs managed by the Kentucky Science and Technology Corporation) depending

upon how they are pro-rated to various state agencies. These additional cuts could equate to another 3 to 4 percent cut in CPE General Funds in each year.

- With the Senate proposed cuts (not including the “efficiency cuts”), CPE General Funds in FY12 would be about 20 percent less than FY08.

Financial Aid

- The Senate Budget for 2010-12 recommends a reduction of General Funds to the state financial aid programs of \$1.9 million in FY11 and \$7.9 million in FY12 versus the House Budget. The Executive Budget had increased state financial aid significantly in both FY11 and FY12.
- Similar to the House, the Senate Budget did not follow the Executive Budget recommendation in bonding the funds in 2010-12.
- The Senate Budget provides \$190 million in FY11 and \$188 million in FY12 in state student financial aid. CAP and KTG are reduced by 1.5 percent in FY11 and an additional 1 percent in FY12. KEES is reduced in the Senate Budget by 1.5 percent in FY11 and 5.4 percent in FY12.

**Council on Postsecondary Education
April 23, 2010**

Tuition Parameters

Due in part to the ongoing uncertainty of the 2010-12 budget and additional tuition discussions that are taking place with state policy leaders, Council members, and institutional presidents, the proposed 2010-11 tuition parameters agenda item will be distributed prior to the April 23 Council meeting.

Staff preparation by John Hayek

**Council on Postsecondary Education
April 23, 2010**

**Renovation of Sanders-Brown Center on Aging
University of Kentucky**

ACTION: The staff recommends that the Council approve the request of the University of Kentucky to renovate the fourth floor of the Sanders-Brown Center on Aging with \$6,428,471 from the National Institutes of Health. The project scope is \$6,428,471.

The University of Kentucky proposes to renovate the fourth floor of the Sanders-Brown Center on Aging using a \$6,428,471 grant from the National Institutes of Health. The total project cost is \$6,428,471.

Typically, the Council considers capital projects after the institution governing board has approved the project and prior to action by the Capital Projects and Bond Oversight Committee. But the guidelines for the use of the \$6,428,471 in federal grant funds – from the American Recovery and Reinvestment Act (2009) – require that implementation of the project begin in a very short timeframe. Because the Council meeting was scheduled at a time that conflicts with the required implementation schedule and the Capital Projects and Bond Oversight Committee meeting, the project is being considered out of sequence by the Council. The university's board of trustees approved the project at its March 9, 2010, meeting. The Capital Projects and Bond Oversight Committee approved the project, contingent on Council action, at its meeting March 22, 2010.

The project will renovate 9,000 square feet of research support space on the fourth floor of the Sanders-Brown Center on Aging, retro-fitting outdated, non-compliant research support space and the associated mechanical equipment to meet current regulatory requirements. The project is located on the university's main campus. The project will result in improvements to state-owned property with ownership of the improvements to accrue to the university upon completion. The project is scheduled to be completed in August 2011.

The Council has the statutory responsibility to review and approve postsecondary education capital projects costing \$600,000 or more, regardless of fund source, that have been approved by an institution's governing board. Since the estimated cost of this project exceeds the \$600,000 threshold, the Council and the Capital Projects and Bond Oversight Committee must approve the project before it is initiated. During the interim, capital projects are evaluated under the requirements established by KRS 45.760(7) and KRS 45.763.

The project requires interim authorization because the federal and state grants have all come forward after the request/recommendation period for the 2010-12 budgetary process was completed and to allow the university to abide by the ARRA requirements for implementation, properly design the construction project, go through the project bid process, award a contract, and complete the work by August 2011.

The University of Kentucky states that funding for the project comes from a federal grant. The university further confirms that the federal grant funds were made available in March 2010 to implement the project. As this is a renovation project and not an expansion of space, the project will not result in additional requests from the General Fund for maintenance and operating funds.

The project meets the requirement of KRS 45.760(7) that the source of funds be at least 50 percent federal or private. The university does not anticipate debt financing any portion of this project, thus, the provisions of KRS 45.763 do not apply. The University of Kentucky's Capital Project Management Division will implement the project.

Following Council action, staff will notify the secretary of the Finance and Administration Cabinet and the Capital Projects and Bond Oversight Committee.

Staff preparation by Sherron Jackson

**Council on Postsecondary Education
April 23, 2010**

Revision to Statewide Diversity Policy Directive

ACTION: The staff recommends that the Council revise its February 2010 directive regarding the development of a statewide diversity policy to guide the development of institutional diversity plans.

A motion passed at the February 2010 CPE meeting directed a work group to develop a policy to guide the development of institutional diversity plans. The motion should have been directed to the CEO rather than a work group. The February motion had modified the original charge to the CEO in January 2009 to develop a diversity plan by asking that a statewide policy be developed rather than a statewide plan.

At its meeting later in February, the CEO members and CPE President King agreed to ask the CPE to revise its February 2010 directive to clarify that the CEO, rather than a work group, develop the policy for consideration by the full Council.

Staff preparation by Sherron Jackson and Rana Johnson

**Council on Postsecondary Education
April 23, 2010**

Kentucky Virtual Library Strategic Plan 2010-2013

ACTION: The Virtual Library Advisory Committee (VLAC) recommends that the Council accept the KYVL Strategic Plan for 2010-2013.
--

KYVL serves P20 education, libraries, and Kentuckians at large by providing academic support services and a comprehensive collection of information resources. Through KYVL, anyone in the state has access to over 25 licensed full-text and abstract research databases. KYVL also supports Kentucky's academic and workforce needs by creating a permanently available digital collection of Kentucky-oriented historic materials through the Kentuckiana Digital Library and Kyleidoscope, offering the ground courier service for interlibrary loan and course materials delivery to library patrons statewide, and funding and facilitating library applications such as the Ex Libris Voyager library management system and the MetaLib library portal and federated search engine.

In January 2009, KYVL initiated a strategic planning process called "reVisioning at 10 Years" with the intent of defining new guiding principles, goals, and objectives by KYVL's 10th anniversary in November. KYVL staff and the reV@10 steering team coordinated the effort, and the larger planning team (over 40 individuals representative of all KYVL stakeholders) contributed at each stage of the process.

The CPE Public Agenda and "Five Questions" served as an overarching guide for the development of the new core values, vision, and mission. The operational plan is being developed as a complement to and in support of the successful accomplishment of the CPE Public Agenda. The new KYVL plan will specify the strategic alignment between each goal/objective and the CPE strategic plan.

The KYVL reV@10 strategic planning effort included feedback from students, educators, librarians, and others collected via focus groups across the state and an online survey. The entire process garnered responses from over 500 constituents. The steering and planning teams provided invaluable direction and expertise as they reviewed this feedback and completed the analysis necessary for a complete "reVisioning" of Kentucky Virtual Library's strategic direction.

The steering team defined the new mission, vision, and core values for KYVL, and worked with the full planning team to create new goals and objectives. The Virtual Library Advisory Committee (VLAC) endorsed the plan in November. The reV@10 process will include operational action plans and performance indicators for a plan to guide KYVL through the next three years.

Staff preparation by Enid Wohlstein



MISSION STATEMENT

The mission of KYVL is to provide all Kentuckians with equitable access to library resources and to a common foundation of quality online information for lifelong learning, working and living.

reVisioning @ 10 years

VISION STATEMENT

- ◆ KYVL provides comprehensive and dynamic information resources for all Kentuckians.
- ◆ KYVL is an essential component of Kentucky's P-20 educational continuum and a valued partner in economic development.
- ◆ KYVL is a model for innovative cooperation and best practices.
- ◆ KYVL is known, sought, used and valued by all.

CORE VALUES

Equitable Access:

We believe that all Kentuckians should have access to quality information regardless of economic status, geographic location or educational level or attainment.

Lifelong Learning:

We believe knowing how to find, evaluate, and use information contributes to lifelong learning and improves the quality of life for all Kentuckians.

Collaboration:

We are committed to working together to share resources and knowledge.

Efficiency:

We are committed to maximizing the use of resources.

Professionalism:

We are committed to high quality services delivered with integrity, accountability and transparency.





GOALS AND OBJECTIVES

GOAL 1: To be valued as the preferred information resource by all Kentuckians

1. Increase visibility to all Kentuckians
2. Minimize barriers to access and use
3. Increase usage of KYVL resources
4. Implement a statewide training initiative

GOAL 2: To have a common core of quality resources and services for all Kentucky libraries

1. Restore previous levels of database content to serve the broad needs of the KYVL community
2. Improve resource sharing
3. Support the migration to the next generation library systems and tools for Kentucky's libraries

GOAL 3: To be an effective leader for the virtual library community throughout Kentucky

1. Increase transparency of KYVL operations and decision-making
2. Identify and implement virtual library best practices
3. Establish a system for regular assessment of organizational effectiveness

GOAL 4: To achieve adequate funding and sustainability

1. Implement a continuous process improvement system for operations
2. Increase effectiveness of organizational structure
3. Develop and implement a more effective funding model



10 years of SERVICE

- Since its inception in November 1999, KYVL's database collection has supported over 125 million searches.
- Our ground courier service has delivered a total of 741,970 containers and 1,153,056 items.
- KYVL's Voyager Consortium (integrated library system) serves 19 institutions that collectively house over 7 million individual items.
- The Kentuckiana Digital Library has digitized historic material representing 18 Kentucky archives, including 1,000 books, over 80,000 digital photographs, 200,000 pages from Kentucky Newspapers, and 100,000 pages from the historic Daily Racing Form.

10 years of SUPPORT

- KYVL has provided countless training and continuing education opportunities for P-20 educators and librarians throughout the state.
- KYVL coordinates courier service for 445 "stops" at 183 libraries. KYVL provides this service at no cost for 171 libraries, thus allowing lab kits, books, videos, and more to be moved between libraries.
- Over ten years, KYVL has supported the Voyager Consortium with over \$4.5 million in software, hardware, data migration, training and hosting costs.

10 years of SAVINGS

- If KYVL members individually purchased the same databases offered by KYVL, they would have paid an additional \$150 million in retail costs over the last 10 years.
- Over the last decade, the KYVL Courier service has saved Kentucky libraries a minimum of \$6 million dollars - the combined cost of shipping all those items at normal rates.
- The Kentuckiana Digital Library has cultivated over 1.5 million dollars in national grant funding.
- Members of KYVL Voyager Consortium have enjoyed a 75% discount off the retail costs of software implementation, compared to costs associated with individual purchasing.

KYVL & Public Postsecondary

- *For every dollar the public KY universities libraries contribute to KYVL, they get back about \$10 in resources.*
- *Our 8 public KY universities would pay \$1.9 million to acquire the same 25 licensed databases provided via Kentucky Virtual Library.*
- *In FY08-09, public KY universities logged 8.9 million searches—that is less than 2 cents per search.*
- *KCTCS would pay \$1.6 million retail if each college library purchased the research databases independently.*
- *In FY08-09, KCTCS users logged 2 million searches.*
- *KCTCS is paying less than 2 cents for each search made in the KYVL resources.*

**Council on Postsecondary Education
April 23, 2010**

2010 Legislative Session

A report on actions related to postsecondary education resulting from the 2010 legislative session will be available at the April 23 meeting. The Council staff will be available for discussion.

Staff preparation by Ron Carson

Council on Postsecondary Education
April 23, 2010

SB 1 Unified Strategic Plan for College and Career Readiness

On March 26, 2009, Governor Steve Beshear signed Senate Bill 1 into law. This significant piece of legislation led to the implementation of several educational initiatives impacting college readiness and degree completion in Kentucky.

Included in these initiatives was a mandate for the Council on Postsecondary Education, the Kentucky Board of Education, and the Kentucky Department of Education to develop a unified strategy to reduce college remediation rates of recent high school graduates by at least 50 percent by 2014 from the rates in 2010 and to increase the college completion rates of students enrolled in one or more remedial classes by 3 percent annually from 2009 to 2014.

CPE and KDE have partnered to develop a unified strategic plan using cross-agency work teams that included KCTCS, four-year institutions, and other external agency partners to develop goals and action plans, identify useful resources, and determine expected outcome measures for each of the strategies promoting readiness and degree completion.

The activities of the work teams will be ongoing and represent a model of collaboration with a shared vision of having all students prepared for postsecondary and career success. The four key strategies to promote readiness and college completion are:

- Accelerated Learning Opportunities (focusing on the expansion of AP/IB access and dual credit opportunities).
- Secondary Intervention Programs (focusing on the development of transitional coursework).
- College and Career Readiness Advising (focusing on the full implementation of the Individual Learning Plan and comprehensive advising programs).
- Postsecondary College Persistence and Degree Completion (focusing on bridge programming, accelerated learning opportunities, and student support and intervention systems).

Staff preparation by Sue Cain and John DeAtley

Council on Postsecondary Education
April 23, 2010

Licensure and Accreditation Update

At its September 10, 2009, meeting, the Council posed two questions which CPE staff has researched for informational purposes.

1. Should CPE assume authority for licensing all for-profit institutions?
2. Should all institutions licensed in Kentucky be accredited by the Southern Association of Colleges and Schools or under a process that mirrors SACS accreditation?

1. Should CPE assume authority for licensing all for-profit institutions?

What is CPE's current licensing authority?

KRS 164.945 - .947 and 13 KAR 1:020 vest the authority to license with the president of CPE. This licensure authority covers:

- All private, for-profit colleges offering a bachelor's degree or above.
- All private, nonprofit colleges.
- Religious colleges and out-of-state private and public colleges which operate in Kentucky.

What is the Kentucky State Board for Proprietary Education's current licensing authority?

If an institution is for-profit and only offering below a bachelor's degree, then the institution is licensed by the Kentucky State Board for Proprietary Education ("Proprietary Board") per KRS Chapter 165A and Kentucky Administrative Regulations Title 201 Chapter 40.

What minimum standards does the Proprietary Board require of a school for licensure?

The Proprietary Board has requirements and standards for licensure similar to CPE.

For example, the proprietary school shall:

- Have adequate space, equipment, instructional materials, and instructor personnel, and the educational and experience qualifications of directors, administrators, supervisors, and instructors shall be satisfactory in terms of the quality of instruction.
- Be maintained and operated in compliance with all local, city, and county ordinances and state law, including rules and regulations adopted pursuant thereto, relative to the safety and health of all persons upon the premises.
- Maintain and make available for inspection adequate records including current personnel forms, teacher evaluations, inventory of equipment and instructional material, and faculty transcripts.

- Maintain and make available for inspection separate files on each student, and shall include copies of the student's application for admission, enrollment agreement, academic record, attendance record, financial payment record, and placement record.
- Be financially sound and reasonably capable of fulfilling commitments to students for training and preparation.
- Have available a financial statement certified by an independent accountant, and a profit-loss statement certified by the owner as being true and current.
- Not utilize advertising of any type which is untrue, deceptive, or misleading and shall be able to document all advertised claims.
- Adhere to a tuition refund schedule as presented in published form prior to enrollment.

Also, the granting of an associate of arts degree or associate of science degree shall be limited to a school accredited by an accrediting agency recognized by the U.S. Department of Education.¹ In addition, a copy of the course outline and a schedule of all tuition and fees, program completion rates, and program placement rates of the school's graduates for the preceding twelve (12) months shall be furnished each student applicant prior to enrollment. Federal guidelines on placement and graduation rates shall be used.

How much state financial aid is going to students at Proprietary Board schools?

Students at three of the 127 schools currently licensed by the Proprietary Board (less than 2 percent) received state financial aid, namely the College Access Program Grant,² for the 2007-08 academic year:

1. Spencerian College – 166 students - \$233,598
2. Galen College of Nursing – 60 students - \$75,471
3. Southwestern College – 40 students - \$40,092

For the three schools, state financial aid totaled \$349,161 to 266 total students, which is .0058 percent (less than 1 percent) of the total \$59,921,965 CAP awarded to 39,728 total students in 2007-08.

¹ 201 KAR 40:020. Section 2. (1).

² Per KHEAA Student Financial Aid Data Report May 2009: The College Access Program (CAP) Grant helps Kentucky's financially needy undergraduate students attend Kentucky public and private colleges and universities, proprietary schools, and community and technical colleges. CAP Grants are awarded to Kentucky residents enrolled for at least six semester hours (half-time) in academic programs of at least two years duration. To apply, students must complete a Free Application for Federal Student Aid (FAFSA). CAP eligibility is determined by the total expected family contribution (EFC), calculated from information on the FAFSA according to the federally mandated formula. Grants are offered to eligible students until all allocated funds are expended.

2. Should all institutions licensed in Kentucky be accredited by the Southern Association of Colleges and Schools or under a process that mirrors SACS accreditation?

What is the purpose of licensure and accreditation?

While licensure and accreditation are related and may have similar criteria, each serves different purposes.

Pursuant to state law, CPE gives a college the authority to grant degrees, gives recognition and approval to bona fide colleges in the state, and provides consumer protection to citizens of the Commonwealth against those agencies and institutions which resort to fraudulent practices, unfair competition, or substandard educational programs.

In contrast, a private non-governmental accrediting agency recognized by the U.S. Department of Education³ does not operate under the jurisdiction of Kentucky's law. Accrediting agencies like the Commission on Colleges of the Southern Association of Colleges and Schools (SACS)⁴ require that an institution have degree-granting authority from the appropriate government agency or agencies, like CPE, in order to be accredited.

Accreditation is voluntary membership for institutions of higher education to an accrediting agency. Primarily, a college seeks accreditation to be eligible for participation in federal financial aid. To be accredited, a college must comply with the requirements of the accrediting agency. If an agency falls out of compliance with accrediting agency criteria, then it may not be reaffirmed for accreditation, but may still be in operation.

In contrast, licensure by CPE is required by state law in order for an institution to operate in Kentucky. Even if a college is accredited and has degree-granting authority from another state, if the college fails to meet CPE's requirements, then the college will not be licensed by CPE and shall not operate in Kentucky. If a college operates in Kentucky fraudulently or illegally without a license, then CPE has statutory authority to take action against the college.

How do licensure and accreditation criteria compare?

In many instances, state regulators like CPE and accrediting agencies may look at some of the same areas and may have similar requirements that colleges must meet.

³ To be recognized by the U.S. Department of Education, an agency must demonstrate that it has standards for accreditation and preaccreditation, if offered, that are sufficiently rigorous to ensure that the agency is a reliable authority regarding the quality of the education or training provided by the institutions or programs it accredits. 34 CFR 602.16.

⁴ SACS is the regional body for the accreditation of degree-granting higher education institutions in Alabama, Florida, Georgia, Kentucky, Louisiana, Mississippi, North Carolina, South Carolina, Tennessee, Texas, Virginia, and Latin America that award associate, baccalaureate, master's, or doctoral degrees.

For example, CPE's standards for licensure are similar to accreditation criteria, such as that of SACS, as both involve the review of:

1. Change in governance or ownership of the institution
2. Change in name of college
3. Change in location of college
4. Program length - minimum number of credit hours in degree programs
5. Financial stability and resources
6. Qualifications of administrators (officers, directors, owners)
7. Qualifications of faculty and staff
8. Sufficient number of full-time faculty
9. Facilities
10. Equipment
11. Library collection, staff, facilities, resources
12. Curriculum with systematic program of revision
13. General education
14. Program supervision and instructional support
15. Truth in advertising
16. Recruitment and enrollment procedures
17. Student affairs and support services
18. College policies

In addition, CPE has recently issued an RFP for site visit consultants who are postsecondary education experts to assist with the review of institutions.

There also are four areas where CPE currently has certain oversight that is more expansive as compared to that of accrediting agencies.

1) Coverage of unearned tuition

Unearned tuition is the excess of cumulative collections of tuition and other instructional charges in accordance with the college's refund policy.

To be licensed by CPE, a college must guarantee the refund of any unearned tuition held by the college in one of the following ways:

- (a) Maintain a surety bond which shall be executed by a surety company qualified and authorized to do business in Kentucky and shall be made payable to CPE.⁵
- (b) Maintain an unrestricted endowment.
- (c) Provide a letter of credit.

⁵ Out-of-state institutions have to use a surety bond per revised licensing regulation 13 KAR 1:020 effective March 5, 2010.

In addition, the college shall provide to CPE a statement by an independent certified public accountant confirming the coverage.

2) New course and program offerings

If a licensed college wants to offer a new certificate, diploma, degree program, major, or other concentration or specialty, or a new course for college credit if the college is offering less than a full program, then the college is required to submit a supplementary application to CPE for review and prior approval.

However, accrediting agencies like SACS only require prior approval for a college to offer additional courses or programs that: (1) represent a significant departure, either in content or method of delivery, from those that were offered when the institution was last evaluated; or (2) are at a degree or credential level above that which is included in the institution's current accreditation or reaffirmation.⁶ This is considered a substantive change under federal regulation.

3) New instructional sites

If a licensed in-state college wants to establish an instructional site away from its main campus for the purpose of offering courses for college credit which comprise at least 25 percent of the course requirements for a degree program, then it is required to submit a supplementary application to CPE to seek review and prior approval. If an out-of-state college wants to establish more than one instructional site in Kentucky, then it is required to submit an application for initial licensure for each site to CPE for review and approval for licensure of each site separately.

However, accrediting agencies like SACS only require prior approval for a college to establish an additional location geographically apart from the main campus at which the institution offers at least 50 percent of an educational program. Again, this is considered a substantive change under federal regulation.

4) Consumer complaints

If a consumer has a complaint or grievance involving misrepresentation against a licensed college, then the consumer may file a written complaint with CPE. The president of CPE reviews the complaint and may intervene to bring the matter to a satisfactory conclusion through facilitation.

However, accrediting agencies like SACS have complaint procedures "for the purpose of addressing any significant noncompliance with the Commission's standards, policies, or procedures," and "the procedures are not intended to be used to involve the Commission in disputes between individuals and member institutions."⁷

⁶ <http://www.sacscoc.org/pdf/081705/Substantive%20change%20policy.pdf>

⁷ <http://www.sacscoc.org/pdf/081705/complaintpolicy.pdf>

What is the relationship between licensure and accreditation, and transfer of credit and employment of graduates?

Neither licensure nor accreditation guarantees transfer of credit or employment of graduates. Per the U.S. Department of Education: "Accreditation does not provide automatic acceptance by an institution of credit earned at another institution, nor does it give assurance of acceptance of graduates by employers. Acceptance of students or graduates is always the prerogative of the receiving institution or employer. For these reasons, besides ascertaining the accredited status of a school or program, students should take additional measures to determine, prior to enrollment, whether or not their educational goals will be met through attendance at a particular institution. These measures should include inquiries to institutions to which transfer might be desired or to prospective employers."⁸

What accrediting agencies does the U.S. Department of Education recognize?

There are 18 institutional accrediting agencies and 43 specialized accrediting agencies, all recognized by the U.S. Department of Education (see attachment).

Some institutional accrediting agencies that accredit colleges licensed by CPE include SACS, the Accrediting Council for Independent Colleges and Schools, the Commission on Higher Education of the Middle States Association of Colleges and Schools,⁹ and the Higher Learning Commission of the North Central Association of Colleges and Schools.¹⁰

Some specialized accrediting agencies include the American Bar Association, the Accreditation Council for Pharmacy Education, and the National Council for Accreditation of Teacher Education.

Conclusion

The above provides information for the Council in response to the two questions it posed. CPE has the authority to accomplish significant review of institutions and programs it licenses using the standards for licensure that exist in the licensing regulation. State regulatory agencies such as CPE, accrediting agencies recognized by the U.S. Department of Education, and other state and federal agencies that approve programs and institutions all provide checks and balances to help ensure quality postsecondary education and services are provided to students.

Staff preparation by Sarah Levy

⁸ <http://www.ed.gov/print/admins/finaid/accred/accreditation.html>

⁹ The regional body for the accreditation of institutions in Delaware, the District of Columbia, Maryland, New Jersey, New York, Pennsylvania, Puerto Rico, the U.S. Virgin Islands, and other locations abroad.

¹⁰ The regional body for the accreditation of institutions in Arkansas, Arizona, Colorado, Iowa, Illinois, Indiana, Kansas, Michigan, Minnesota, Missouri, North Dakota, Nebraska, Ohio, Oklahoma, New Mexico, South Dakota, Wisconsin, West Virginia, and Wyoming.

THE U.S. DEPARTMENT OF EDUCATION

[HTTP://WWW.ED.GOV/PRINT/ADMINS/FINAID/ACCRED/ACCREDITATION.HTML](http://www.ed.gov/print/admins/finaid/accred/accreditation.html)

NATIONALLY RECOGNIZED ACCREDITING AGENCIES

The regional and national accrediting agencies linked to below are recognized by the U.S. Secretary of Education as reliable authorities concerning the quality of education or training offered by the institutions of higher education or higher education programs they accredit. The dates specified for each entry are the date of initial listing as a nationally recognized agency, the date of the Secretary's most recent grant of renewed recognition, and the date of the agency's next scheduled review for renewal of recognition by the National Advisory Committee on Institutional Quality and Integrity. Unless otherwise noted in a Title IV note after the agency's name, accreditation by an agency included on the lists linked to below may be used by an institution accredited by the agency to establish eligibility to participate in Title IV programs.

- [Regional and National Institutional Accrediting Agencies](#)
- [Specialized Accrediting Agencies](#)
 - [Arts and Humanities](#)
 - [Education Training](#)
 - [Legal](#)
 - [Community and Social Services](#)
 - [Personal Care and Services](#)
 - [Healthcare](#)
- [Accrediting Agencies Recognized for Their Preaccreditation Categories](#)
- [Accrediting Agencies Recognized for Title IV Purposes](#)

REGIONAL AND NATIONAL INSTITUTIONAL ACCREDITING AGENCIES

The dates specified for each entry are the date of initial listing as a recognized agency, the date of the Secretary's most recent grant of renewed recognition, and the date of the agency's next scheduled review for renewal of recognition by the National Advisory Committee on Institutional Quality and Integrity.

Note: The U.S. Department of Education does not have the authority to accredit private or public elementary or secondary schools, and the Department does not recognize accrediting bodies for the accreditation of private or public elementary and secondary schools. However, the U.S. Department of Education does recognize accrediting bodies for the accreditation of institutions of higher (postsecondary) education. If an accrediting body which is recognized by the Department for higher education also accredits elementary and secondary schools, the Department's recognition applies only to the agency's accreditation of postsecondary institutions.

Accrediting Bureau of Health Education Schools

1969/2005/F2009

Scope of recognition: the accreditation of private, postsecondary institutions in the United States offering predominantly allied health education programs and the programmatic accreditation of medical assistant, medical laboratory technician and surgical technology programs, leading to a certificate, diploma, Associate of Applied Science, Associate of Occupational Science, or Academic Associate degree, including those offered via distance education.

Title IV Note: *Only freestanding allied health education institutions and institutions that offer predominantly allied health programs may use accreditation by this agency to establish eligibility to participate in Title IV programs.*

Carol Moneymaker, Executive Director
7777 Leesburg Pike, Suite 314N
Falls Church, Virginia 22043
Tel. (703) 917-9503, Fax (703) 917-4109
E-mail address: CMoneymaker@abhes.org
Web address: www.abhes.org

Accrediting Commission of Career Schools and Colleges

1967/2005/F2009

Scope of recognition: the accreditation of private, postsecondary, nondegree-granting institutions and degree-granting institutions in the United States, including those granting associate, baccalaureate and master's degrees, that are predominantly organized to educate students for occupational, trade and technical careers, and including institutions that offer programs via distance education.

Michale McComis, Executive Director
2101 Wilson Boulevard, Suite 302
Arlington, Virginia 22201
Tel. (703) 247-4212, Fax (703) 247-4533
E-mail address: mccomis@accsc.org
Web address: www.accsc.org

Accrediting Council for Continuing Education and Training

1978/2008/F2012

Scope of recognition: the accreditation throughout the United States of institutions of higher education that offer continuing education and vocational programs that confer certificates or occupational associate degrees, including those programs offered via distance education.

Title IV Note: *Only those institutions classified by this agency as "vocational" may use accreditation by the agency to establish eligibility to participate in Title IV programs.*

Roger J. Williams, Executive Director
1722 N Street, NW
Washington, DC 20036
Tel. (202) 955-1113, Fax (202) 955-1118
E-mail address: rjwilliams@accet.org
Web address: www.accet.org

Accrediting Council for Independent Colleges and Schools

1956/2006/S2011

Scope of recognition: the accreditation of private postsecondary institutions offering certificates or diplomas, and postsecondary institutions offering associate, bachelor's, or master's degrees in programs designed to educate students for professional, technical, or occupational careers, including those that offer those programs via distance education.

Albert C. Gray
Executive Director and Chief Executive Officer
750 First Street, NE, Suite 980
Washington, DC 20002-4242
Tel. (202) 336-6780, Fax (202) 842-2593
E-mail address: agray@acics.org
Web address: www.acics.org

Council on Occupational Education

1969/2007/S2011

Scope of recognition: the accreditation and preaccreditation ("Candidacy Status") throughout the United States of postsecondary occupational education institutions offering non-degree and applied associate degree programs in specific career and technical education fields, including institutions that offer programs via distance education.

Gary Puckett, Executive Director
41 Perimeter Center East, NE, Suite 640
Atlanta, Georgia 30346
Tel. (770) 396-3898, (800) 917-2081, Fax (770) 396-3790
E-mail address: puckettg@council.org
Web address: www.council.org

Distance Education and Training Council, Accrediting Commission

1959/2007/F2011

Scope of recognition: the accreditation of postsecondary institutions in the United States that offer degree programs primarily by the distance education method up to and including the professional doctoral degree, and are specifically certified by the agency as accredited for Title IV purposes; and for the accreditation of postsecondary institutions in the United States not participating in Title IV that offer programs primarily by the distance education method up through the professional doctoral degrees.

Title IV Note: *Only accredited institutions that are certified by the agency as accredited for Title IV purposes may use accreditation by this agency to establish eligibility to participate in Title IV programs.*

Michael P. Lambert, Executive Director
1601 18th Street, NW
Washington, DC 20009
Tel. (202) 234-5100, Fax (202) 332-1386
E-mail address: Detc@detc.org
Web address: www.detc.org

Middle States Association of Colleges and Schools, Commission on Higher Education

1952/2007/S2012

Scope of recognition: the accreditation and preaccreditation ("Candidacy status") of institutions of higher education in Delaware, the District of Columbia, Maryland, New Jersey, New York, Pennsylvania, Puerto Rico, and the U.S. Virgin Islands, including distance education programs offered at those institutions.

Elizabeth H. Sibolski, Acting President
3624 Market Street
Philadelphia, Pennsylvania 19104
Tel. (267) 284-5000, Fax (215) 662-5950
E-mail address: info@msche.org
Web address: www.msche.org

Middle States Commission on Secondary Schools

2004/2007/F2011

Scope of recognition: the accreditation of institutions with postsecondary, non-degree granting career and technology programs in Delaware, Maryland, New Jersey, New York, Pennsylvania, the Commonwealth of Puerto Rico, the District of Columbia, and the U.S. Virgin Islands including those that offer all or part of their educational programs via distance education modalities.

Title IV Note: *Only those vocational/technical schools accredited by this agency that offer non-degree, postsecondary education may use that accreditation to establish eligibility to participate in Title IV programs.*

Henry Cram, Executive Director
3624 Market Street, 2nd Floor Annex
Philadelphia, Pennsylvania 19104-2680
Tel. (215) 662-5603, Fax (215) 662-0957
E-mail address: kkastle@css-msa.org
Web address: www.css-msa.org

New England Association of Schools and Colleges, Commission on Institutions of Higher Education

1952/2008/F2012

Scope of recognition: the accreditation and pre-accreditation ("Candidacy status") of institutions of higher education in Connecticut, Maine, Massachusetts, New Hampshire, Rhode Island, and Vermont that award associate's, bachelor's, master's, and/or doctoral degrees, including the accreditation of programs offered via distance education within these institutions. This recognition extends to the Board of Trustees of the Association jointly with the Commission for decisions involving pre-accreditation, initial accreditation, and adverse actions.

Barbara E. Brittingham, Director
209 Burlington Road
Bedford, Massachusetts 01730-1433
Tel. (781) 271-0022, Fax (781) 271-0950

E-mail address: bbrittingham@neasc.org
Web address: www.neasc.org

New England Association of Schools and Colleges, Commission on Technical and Career Institutions

1952/2006/F2008

Scope of recognition: the accreditation and preaccreditation ("Candidate status") of secondary institutions with vocational-technical programs at the 13th and 14th grade level, postsecondary institutions, and institutions of higher education that provide primarily vocational/technical education at the certificate, associate, and baccalaureate degree levels in Connecticut, Maine, Massachusetts, New Hampshire, Rhode Island, and Vermont. This recognition extends to the Board of Trustees of the Association jointly with the Commission for decisions involving preaccreditation, initial accreditation, and adverse actions.

Title IV Note: *Any vocational/technical schools accredited by this agency that offer non-degree, postsecondary education and that wish to use that accreditation to establish eligibility to participate in Title IV programs must be accredited by the agency as offering education through the 13th or 14th grade level.*

Paul Bento, Director
209 Burlington Road, Suite 201
Bedford, Massachusetts 01730-1433
Tel. (781) 541-5416, Fax (781) 271-0950
E-mail address: pbento@neasc.org
Web address: www.neasc.org

New York State Board of Regents, and the Commissioner of Education

1952/2007/S2012

Scope of recognition: the accreditation of those degree-granting institutions of higher education in New York, including distance education offered by those institutions, that designate the agency as their sole or primary nationally recognized accrediting agency for purposes of establishing eligibility to participate in HEA programs.

David M. Steiner, Commissioner of Education
State Education Department
The University of the State of New York
80 Washington Avenue
Albany, New York 12234
Tel. (518) 474-5844 Fax (518) 473-4909
E-Mail address: dsteiner@mail.nysed.gov
Web address: www.nysed.gov

North Central Association of Colleges and Schools, The Higher Learning Commission

1952/2008/F2012

Scope of recognition: the accreditation and pre-accreditation ("Candidate for Accreditation") of degree-granting institutions of higher education in Arizona, Arkansas, Colorado, Illinois, Indiana, Iowa, Kansas, Michigan, Minnesota, Missouri, Nebraska, New Mexico, North Dakota, Ohio, Oklahoma, South Dakota, West Virginia, Wisconsin, and Wyoming, including tribal institutions, and the accreditation of programs offered via distance education within these institutions. This recognition extends to the Institutional Actions Committee jointly with the Board of Trustees of the Commission for decisions on cases for continued accreditation or reaffirmation and continued candidacy. This recognition also extends to the Review Committee of the Accreditation Review Council, jointly with the Board of Trustees of the Commission, for decisions on cases for continued accreditation or candidacy and for initial candidacy or initial accreditation when there is a consensus decision by the Review Committee.

Sylvia Manning, President
30 North LaSalle Street, Suite 2400
Chicago, Illinois 60602
Tel. (312) 263-0456, (800) 621-7440, Fax (312) 263-7462
E-mail address: smanning@hlcommission.org
Web address: www.ncahigherlearningcommission.org

North Central Association Commission on Accreditation and School Improvement, Board of Trustees

1974/2007/F2011

Scope of recognition: the accreditation and preaccreditation ("Candidacy status") of schools offering non-degree, postsecondary education in Arizona, Arkansas, Colorado, Illinois, Indiana, Iowa, Kansas, Michigan, Minnesota, Missouri, Nebraska, New Mexico, North Dakota, Ohio, Oklahoma, South Dakota, West Virginia, Wisconsin, Wyoming, and in the Navajo Nation.

Title IV Note: *Only those vocational/technical schools accredited by this agency that offer non-degree, postsecondary education may use that accreditation to establish eligibility to participate in Title IV programs.*

Mark Elgart, Executive Director
Arizona State University
7665 S. Research Drive
P.O. Box 871008
Tempe, Arizona 85287-1008
Tel. (800) 525-9517, (480) 773-6900, Fax (480) 965-8658
E-mail address: nca@ncacasi.org
Web address: www.ncacasi.org

Northwest Commission on Colleges and Universities

1952/2008/F2012

Scope of recognition: the accreditation and pre-accreditation ("Candidacy status") of postsecondary degree-granting educational institutions in Alaska, Idaho, Montana, Nevada, Oregon, Utah, and Washington, including the accreditation of programs offered via distance education within these institutions.

Sandra E. Elman, President
8060 165th Avenue, NE, Suite 100
Redmond, Washington 98052
Tel. (425) 558-4224, Fax (425) 376-0596
E-mail address: selman@nwccu.org
Web address: www.nwccu.org

Southern Association of Colleges and Schools, Commission on Colleges

1952/2006/S2011

Scope of recognition: the accreditation and preaccreditation ("Candidate for Accreditation") of degree-granting institutions of higher education in Alabama, Florida, Georgia, Kentucky, Louisiana, Mississippi, North Carolina, South Carolina, Tennessee, Texas, and Virginia, including distance education programs offered at those institutions.

Belle S. Wheelan, President
1866 Southern Lane
Decatur, Georgia 30033-4097
Tel. (404) 679-4512, Fax (404) 679-4528
E-mail address: bwheelan@sacscoc.org
Web address: www.sacscoc.org

Transnational Association of Christian Colleges and Schools, Accreditation Commission

1991/2005/F2009

Scope of recognition: the accreditation and preaccreditation ("Candidate" status) of postsecondary institutions in the United States that offer certificates, diplomas, and associate, baccalaureate, and graduate degrees, including institutions that offer distance education.

Russell Guy Fitzgerald, Jr., Executive Director
P.O. Box 328
Forest, Virginia 24551
Tel. (434) 525-9539, Fax (434) 525-9538
E-mail address: rfitzgerald@tracs.org
Web address: www.tracs.org

Western Association of Schools and Colleges, Accrediting Commission for Community and Junior Colleges

1952/2008/F2012

Scope of recognition: the accreditation and pre-accreditation ("Candidate for Accreditation") of two-year, associate degree-granting institutions located in California, Hawaii, the United States territories of Guam and American Samoa, the Republic of Palau, the Federated States of Micronesia, the Commonwealth of the Northern Mariana Islands, and the Republic of the Marshall Islands, including the accreditation of such programs offered via distance education at these colleges.

Barbara A. Beno, President
10 Commercial Boulevard, Suite 204
Novato, California 94949
Tel. (415) 506-0234, Fax (415) 506-0238
E-mail address: accjc@accjc.org
Web address: www.wascweb.org

Western Association of Schools and Colleges, Accrediting Commission for Schools

1974/2006/F2008

Scope of recognition: the accreditation and preaccreditation ("Candidate for Accreditation") of adult and postsecondary schools that offer programs below the degree level in California, Hawaii, the United States territories of Guam and American Samoa, the Republic of Palau, the Federated States of Micronesia, the Commonwealth of the Northern Mariana Islands, and the Republic of the Marshall Islands.

Title IV Note: *Only adult and postsecondary schools accredited by this agency that offer postsecondary programs below the degree level may use accreditation by this agency to establish eligibility to participate in Title IV programs.*

David E. Brown, Executive Director
533 Airport Boulevard, Suite 200
Burlingame, California 94010
Tel. (650) 696-1060, Fax (650) 696-1867
E-mail address: mail@acswasc.org
Web address: www.wascweb.org

Western Association of Schools and Colleges, Accrediting Commission for Senior Colleges and Universities

1952/2007/F2011

Scope of recognition: the accreditation and preaccreditation ("Candidate for Accreditation") of senior colleges and universities in California, Hawaii, the United States territories of Guam and American Samoa, the Republic of Palau, the Federated States of Micronesia, the Commonwealth of the Northern Mariana Islands and the Republic of the Marshall Islands, including distance education programs offered at those institutions.

Ralph Wolff
President and Executive Director
985 Atlantic Avenue, Suite 100
Alameda, California 94501
Tel. (510) 748-9001, Fax (510) 748-9797
E-mail address: wascsr@wascsenior.org
Web address: www.wascweb.org

SPECIALIZED ACCREDITING AGENCIES

The dates specified for each entry are the date of initial listing as a recognized agency, the date of the Secretary's most recent grant of renewed recognition, and the date of the agency's next scheduled review for renewal of recognition by the National Advisory Committee on Institutional Quality and Integrity. (Note: S = Spring meeting and F = Fall meeting)

ARTS AND HUMANITIES

American Academy for Liberal Education

1995/2007/F2010

Scope of recognition: the accreditation and preaccreditation ("Candidacy for Accreditation") of institutions of higher education and programs within institutions of higher education throughout the United States that offer liberal arts degree(s) at the baccalaureate level or a documented equivalency.

Title IV Note: *Only institutions of higher education accredited by this agency may use that accreditation to establish eligibility to participate in Title IV programs.*

Jeff A. Martineau, President
1050 17th Street, N.W., Suite 500
Washington, DC 20036
Tel (202) 452-8611, Fax (202) 452-8620
E-mail address: jmartineau@aale.org
Web address: www.aale.org

National Association of Schools of Art and Design, Commission on Accreditation

1966/2008/F2012

Scope of recognition: for the accreditation throughout the United States of freestanding institutions and units offering art/design and art/design-related programs (both degree- and non-degree-granting), including those offered via distance education.

Title IV Note: *Only freestanding schools or colleges of art and design may use accreditation by this agency to establish eligibility to participate in Title IV programs.*

Samuel Hope, Executive Director
11250 Roger Bacon Drive, Suite 21
Reston, Virginia 20190
Tel. (703) 437-0700, Fax (703) 437-6312
E-mail address: info@arts-accredit.org
Web address: www.arts-accredit.org

National Association of Schools of Dance, Commission on Accreditation

1983/2008/F2012

Scope of recognition: for the accreditation throughout the United States of freestanding institutions and units offering dance and dance-related programs (both degree- and non-degree-granting), including those offered via distance education.

Title IV Note: *Only freestanding schools or colleges of dance may use accreditation by this agency to establish eligibility to participate in Title IV programs.*

Samuel Hope, Executive Director
11250 Roger Bacon Drive, Suite 21
Reston, Virginia 20190
Tel. (703) 437-0700, Fax (703) 437-6312
E-mail address: info@arts-accredit.org
Web address: www.arts-accredit.org

National Association of Schools of Music, Commission on Accreditation,

1952/2008/F2012

Scope of recognition: the accreditation throughout the United States of freestanding institutions and units offering music and music-related programs (both degree- and non-degree-granting), including those offered via distance education.

Title IV Note: *Only freestanding schools or colleges of music may use accreditation by this agency to establish eligibility to participate in Title IV programs.*

Samuel Hope, Executive Director
11250 Roger Bacon Drive, Suite 21
Reston, Virginia 20190
Tel. (703) 437-0700, Fax (703) 437-6312
E-mail address: info@arts-accredit.org
Web address: www.arts-accredit.org

National Association of Schools of Theatre, Commission on Accreditation

1982/2008/F2012

Scope of recognition: the accreditation throughout the United States of freestanding institutions and units offering theatre and theatre-related programs (both degree- and non-degree-granting), including those offered via distance education.

Title IV Note: *Only freestanding schools or colleges of theatre may use accreditation by this agency to establish eligibility to participate in Title IV programs.*

Samuel Hope, Executive Director
11250 Roger Bacon Drive. Suite 21
Reston, Virginia 20190
Tel. (703) 437-0700, Fax (703) 437-6312
E-mail address: info@arts-accredit.org
Web address: www.arts-accredit.org

 [Top](#)

EDUCATION TRAINING

Montessori Accreditation Council for Teacher Education, Commission on Accreditation

1995/2003/S2008

Scope of recognition: The accreditation of Montessori teacher education institutions and programs, throughout the United States, including those offered via distance education.

Title IV Note: *Only freestanding Montessori teacher education schools may use accreditation by this agency to establish eligibility to participate in Title IV programs. Further, that accreditation must have been granted in conjunction with the accrediting activities of the review committees listed above.*

Gretchen Warner, Executive Director
Montessori Accreditation Council for Teacher Education
524 Main Street, Suite 202
Racine, Wisconsin 53403
Tel. (262) 898-1846, Fax (262) 898-1849
E-mail address: warner@macte.org
Web address: www.MACTE.org

National Council for Accreditation of Teacher Education

1952/2006/S2011

Scope of recognition: the accreditation throughout the United States of professional education units providing baccalaureate and graduate degree programs for the preparation of teachers and other professional personnel for elementary and secondary schools, including programs offering distance education.

Title IV Note: *Accreditation by this agency does not enable the entities it accredits to establish eligibility to participate in Title IV programs.*

James G. Cibulka, President
2010 Massachusetts Avenue, NW
Washington, DC 20036-1023
Tel. (202) 466-7496, Fax (202) 296-6620
E-mail address: ncate@ncate.org
Web address: ncate.org

Teacher Education Accreditation Council, Accreditation Committee

2003/2005/S2010

Scope of recognition: for the accreditation and pre-accreditation throughout the United States of professional teacher education programs in institutions offering baccalaureate and graduate degrees for the preparation of K-12 teachers.

Title IV Note: *Accreditation by this agency does not enable the entities it accredits to establish eligibility to participate in Title IV programs.*

Frank B. Murray, President
One Dupont Circle, Suite 320
Washington, DC 20036-0110
Tel. (202) 466-7236, Fax (202) 466-7238
E-mail address: frank@teac.org
Web address: www.teac.org

 [Top](#)

LEGAL

American Bar Association, Council of the Section of Legal Education and Admissions to the Bar

1952/2007/F2008

Scope of recognition: the accreditation throughout the United States of programs in legal education that lead to the first professional degree in law, as well as freestanding law schools offering such programs. This recognition also extends to the Accreditation Committee of the Section of Legal Education (Accreditation Committee) for decisions involving continued accreditation (referred to by the agency as "approval") of law schools.

Title IV Note: *Only freestanding law schools may use accreditation by this agency to establish eligibility to participate in Title IV programs.*

Hulett H. Askew
Consultant on Legal Education, ABA
321 North Clark Street, 21st Floor
Chicago, Illinois 60610-4714
Tel. (312) 988-6746, Fax (312) 988-5681
E-mail address: askewh@staff.abanet.org
Web address: www.abanet.org/legaled/

 [Top](#)

COMMUNITY AND SOCIAL SERVICES

American Association for Marriage and Family Therapy, Commission on Accreditation for Marriage and Family Therapy Education

1978/2006/F2010

Scope of recognition: the accreditation and preaccreditation ("Candidacy") throughout the United States of clinical training programs in marriage and family therapy at the master's, doctoral, and postgraduate levels.

Title IV Note: *Accreditation by this agency does not enable the entities it accredits to establish eligibility to participate in Title IV programs.*

Victoria Matthews
Director of Education Affairs
112 South Alfred Street
Alexandria, Virginia 22314-3061
Tel. (703) 253-0459, Fax (703) 253-0508
E-mail address: vmatthews@aamft.org
Web address: www.aamft.org

Association for Biblical Higher Education, Commission on Accreditation

1952/2007/F2011

Scope of recognition: the accreditation and preaccreditation ("Candidate for Accreditation") of Bible colleges and institutes in the United States offering undergraduate programs through both campus-based instruction and distance education.

Ralph E. Enlow, Jr, Executive Director
5575 S. Semoran Boulevard, Suite 26
Orlando, Florida 32822-1781
Tel. (407) 207-0808, Fax (407) 207-0840
E-mail address: renlow@abhe.org
Web address: abhe.gospelcom.net

Association for Clinical Pastoral Education, Inc., Accreditation Commission

1969/2007/F2011

Scope of recognition: the accreditation of both clinical pastoral education (CPE) centers and CPE and Supervisory CPE programs located within the United States and territories.

Title IV Note: *Accreditation by this agency does not enable the entities it accredits to establish eligibility to participate in Title IV programs.*

Teresa E. Snorton, Executive Director
1549 Claremont Road, Suite 103
Decatur, Georgia 30033-4611
Tel. (404) 320-1472 fax (404) 320-0849
E-mail address: acpe@acpe.edu
Web address: www.acpe.edu

Association of Advanced Rabbinical and Talmudic Schools, Accreditation Commission

1974/2007/S2012

Scope of recognition: the accreditation and preaccreditation ("Correspondent" and "Candidate") within the United States of advanced rabbinical and Talmudic schools.

Bernard Fryshman, Executive Vice-President
11 Broadway, Suite 405
New York, New York 10004
Tel. (212)363-1991, Fax (212) 533-5335
E-mail address: BFryshma@nyit.edu

Commission on Accrediting of the Association of Theological Schools

1952/2004/S2009

Scope of recognition: the accreditation and preaccreditation ("Candidate for Accredited Membership") of theological schools and seminaries, as well as schools or programs that are parts of colleges or universities, in the United States, offering post baccalaureate degrees in professional and academic theological education, including delivery via distance education.

Title IV Note: *Only freestanding institutions, colleges, or seminaries of theology may use accreditation by this agency to establish eligibility to participate in Title IV programs.*

Daniel O. Aleshire, Executive Director
10 Summit Park Drive
Pittsburgh, Pennsylvania 15275-1103
Tel. (412) 788-6505, Fax (412) 788-6510
E-mail address: ats@ats.edu
Web address: www.ats.edu

Commission on English Language Program Accreditation

2003/2005/S2010

Scope of recognition: the accreditation of postsecondary, non-degree-granting English language programs and institutions in the United States.

Title IV Note: Accreditation by this agency does not enable the entities it accredits to establish eligibility to participate in Title IV programs.

Teresa D. O'Donnell, Executive Director
401 N. Fairfax Drive, Suite 402
Alexandria, Virginia 22314
Tel. (703) 519-2070, Fax (703)683-8099
E-mail address: todonnell@cea-accredit.org
Web address: www.cea-accredit.org

 [Top](#)

PERSONAL CARE AND SERVICES

American Board of Funeral Service Education, Committee on Accreditation

1972/2002/S2008

Scope of recognition: the accreditation of institutions and programs within the United States awarding diplomas, associate degrees and bachelor's degrees in funeral service or mortuary science, including the accreditation of distance learning courses and programs offered by these programs and institutions.

Title IV Note: Only freestanding schools or colleges of funeral service or mortuary science may use accreditation by this agency to establish eligibility to participate in Title IV programs.

Michael Smith, Executive Director
3414 Ashland Avenue, Suite G
St. Joseph, Missouri 64506
Tel. (816) 233-3747, Fax (816) 233-3793
E-mail address: exdir@abfse.org
Web address: www.abfse.org

Commission on Massage Therapy Accreditation

2002/2004/S2009

Scope of recognition: the accreditation of institutions in the United States, that award postsecondary certificates, postsecondary diplomas, and academic Associate degrees, in the practice of massage therapy and bodywork.

Kate Ivane Henriouille
Executive Director
Commission on Massage Therapy Accreditation
5335 Wisconsin Avenue, NW, Suite 440
Washington, DC 20015
Tel. (202) 895-1518, Fax (202) 895-1519
E-mail address: khenriouille@comta.org
Web address: www.comta.org

National Accrediting Commission of Cosmetology Arts and Sciences

1970/2006/S2008

Scope of recognition: the accreditation of postsecondary schools and departments of cosmetology arts and sciences and massage therapy.

Anthony Mirando
Executive Director
4401 Ford Avenue, Suite 1300
Arlington, Virginia 22303
Tel. (703) 600-7600, Fax (703) 379-2200
E-mail address: amirando@naccas.org
Web address: www.naccas.org

 [Top](#)

HEALTHCARE

Accreditation Commission for Acupuncture and Oriental Medicine

1988/2006/F2010

Scope of recognition: the accreditation and preaccreditation ("Candidacy" status) throughout the United States of first-professional master's degree and professional master's level certificate and diploma programs in acupuncture and Oriental medicine, as well as freestanding institutions and colleges of acupuncture or Oriental medicine that offer such programs.

Title IV Note: *Only freestanding institutions or colleges of acupuncture or Oriental medicine may use accreditation by this agency to establish eligibility to participate in Title IV programs.*

Dort S. Bigg, Executive Director
Maryland Trade Center 3
7501 Greenway Center Drive, Suite 820
Greenbelt, MD 20770
Tel. (301) 313-0855, Fax (301) 313-0912
E-mail address: dort.bigg@acaom.org
Web address: www.acaom.org

Accreditation Council for Pharmacy Education

1952/2006/S2011

Scope of recognition: the accreditation and preaccreditation of professional degree programs in pharmacy leading to the degree of Doctor of Pharmacy.

Title IV Note: *Accreditation by this agency does not enable the entities it accredits to establish eligibility to participate in Title IV programs.*

Peter H. Vlasses, Executive Director
20 North Clark Street, Suite 2500
Chicago, Illinois 60602-5109
Tel. (312) 664-3575, Fax (312) 664-46522
E-mail address: pvllasses@acpe-accredit.org
Web address: www.acpe-accredit.org

Accrediting Bureau of Health Education Schools

1969/2005/F2009

Scope of recognition: the accreditation of private, postsecondary institutions in the United States offering predominantly allied health education programs and the programmatic accreditation of medical assistant, medical laboratory technician and surgical technology programs, leading to a certificate, diploma, Associate of Applied Science, Associate of Occupational Science, or Academic Associate degree, including those offered via distance education.

Title IV Note: *Only freestanding allied health education institutions and institutions that offer predominantly allied health programs may use accreditation by this agency to establish eligibility to participate in Title IV programs.*

Carol Moneymaker, Executive Director
7777 Leesburg Pike, Suite 314N
Falls Church, Virginia 22043
Tel. (703) 917-9503, Fax (703) 917-4109
E-mail address: CMoneymaker@abhes.org
Web address: www.abhes.org

American College of Nurse-Midwives, Accreditation Commission for Midwifery Education

1982/2006/S2011

Scope of recognition: the accreditation and pre-accreditation of basic certificate, basic graduate nurse-midwifery, direct entry midwifery, and pre-certification nurse-midwifery education programs. The accreditation and pre-accreditation of freestanding institutions of midwifery education that may offer other related health care programs to include nurse practitioner programs, and including those institutions and programs that offer distance education.

Title IV Note: *Only freestanding institutions of midwifery education may use accreditation by this agency to establish eligibility to participate in Title IV programs.*

Mary C. Brucker
Chair, ACNM Accreditation Commission
Nurse-Midwifery Program
8403 Colesville Road, Suite 1550
Silver Spring, Maryland 20910
Tel. (240) 485-1802, Fax (240) 485-1818
E-mail address: jburke@acnm.org
Web address: www.midwife.org

American Dental Association, Commission on Dental Accreditation

1952/2006/S2011

Scope of recognition: the accreditation of predoctoral dental education programs (leading to the D.D.S. or D.M.D. degree), advanced dental education programs, and allied dental education programs that are fully operational or have attained "Initial Accreditation" status, including programs offered via distance education.

Title IV Note: *Accreditation by this agency does not enable the entities it accredits to establish eligibility to participate in Title IV programs.*

Anthony Ziebert, Director
Commission on Dental Accreditation
American Dental Association
211 East Chicago Avenue, 18th Floor
Chicago, Illinois 60611
Tel. (312) 440-2712, (800) 621-8099, Fax (312) 440-2915
E-mail address: zieberta@ada.org
Web address: www.ada.org

American Dietetic Association, Commission on Accreditation for Dietetics Education

1974/2007/S2012

Scope of recognition: the accreditation and pre-accreditation, within the United States, of Didactic and Coordinated Programs in Dietetics at both the undergraduate and graduate level, post-baccalaureate Dietetic Internships, and Dietetic Technician Programs at the associate degree level, and for its accreditation of such programs offered via distance education.

Title IV Note: *Only postbaccalaureate dietetic internship programs may use accreditation by this agency to establish eligibility to participate in Title IV programs.*

Ulric K. Chung, Executive Director
120 South Riverside Plaza, Suite 2000
Chicago, Illinois 60606-6995
Tel. (312) 899-4872, Fax (312) 899-4817
E-mail address: UChung@eatright.org
Web address: www.eatright.org/cade

American Occupational Therapy Association, Accreditation Council for Occupational Therapy Education

1952/2007/F2011

Scope of recognition: the accreditation of occupational therapy educational programs offering the professional master's degree, combined baccalaureate/master's degree, and occupational therapy doctorate (OTD) degree; the accreditation of occupational therapy assistant programs offering the associate degree or a certificate; and the accreditation of these programs offered via distance education.

Title IV Note: *Accreditation by this agency does not enable the entities it accredits to establish eligibility to participate in Title IV programs.*

Neil Harvison
Director of Accreditation
4720 Montgomery Lane
PO Box 31220
Bethesda, Maryland 20824-1220
Tel. (301) 652-2682x2912, Fax (301) 652-7711
E-mail address: nharvison@aota.org
Web address: www.aota.org

American Optometric Association, Accreditation Council on Optometric Education

1952/2008/F2012

Scope of recognition: the accreditation in the United States of professional optometric degree programs, optometric technician (associate degree) programs, and optometric residency programs, and for the pre-accreditation categories of Preliminary Approval for professional optometric degree programs and Candidacy Pending for optometric residency programs in Department of Veterans Affairs facilities.

Title IV Note: *Accreditation by this agency does not enable the entities it accredits to establish eligibility to participate in Title IV programs.*

Joyce L. Urbeck, Administrative Director
243 North Lindbergh Boulevard
St. Louis, Missouri 63141
Tel. (314) 991-4100, Fax (314) 991-4101
E-mail address: JLUrbeck@aoa.org
Web address: www.aoanet.org

American Osteopathic Association, Commission on Osteopathic College Accreditation

1952/2006/F2010

Scope of recognition: the accreditation and preaccreditation ("Provisional Accreditation") throughout the United States of freestanding, public and private non-profit institutions of osteopathic medicine and programs leading to the degree of Doctor of Osteopathy or Doctor of Osteopathic Medicine.

Title IV Note: *Only freestanding schools or colleges of osteopathic medicine may use accreditation by this agency to establish eligibility to participate in Title IV programs.*

Konrad C. Miskowicz-Retz, Director
Department of Education
American Osteopathic Association
142 East Ontario Street
Chicago, Illinois 60611
Tel. (312) 202-8048 fax (312) 202-8202
E-mail address: kretz@osteopathic.org
Web address: www.osteopathic.org

American Physical Therapy Association, Commission on Accreditation in Physical Therapy Education

1977/2007/F2011

Scope of recognition: the accreditation and preaccreditation ("Candidate for Accreditation") in the United States of physical therapist education programs leading to the first professional degree at the master's or doctoral level and physical therapist assistant education programs at the associate degree level and for its accreditation of such programs offered via distance education.

Title IV Note: *Accreditation by this agency does not enable the entities it accredits to establish eligibility to participate in Title IV programs.*

Mary Jane Harris, Director
Department of Accreditation
Trans Potomac Plaza
1111 North Fairfax Street
Alexandria, Virginia 22314
Tel. (703) 706-3245, Fax (703) 684-7343
E-mail address: maryjaneharris@apta.org
Web address: www.apta.org

American Podiatric Medical Association, Council on Podiatric Medical Education

1952/2006/F2010

Scope of recognition: the accreditation and preaccreditation ("Candidate Status") throughout the United States of freestanding colleges of podiatric medicine and programs of podiatric medicine, including first professional programs leading to the degree of Doctor of Podiatric Medicine.

Title IV Note: *Only freestanding schools or colleges of podiatric medicine may use accreditation by this agency to establish eligibility to participate in Title IV programs.*

Alan R. Tinkleman, Director
9312 Old Georgetown Road
Bethesda, Maryland 20814-1621
Tel. (301) 571-9200, Fax (301) 571-4903
E-mail address: artinkleman@apma.org
Web address: www.cpme.org

American Psychological Association, Committee on Accreditation

1970/2005/F2009

Scope of recognition: the accreditation in the United States of doctoral programs in clinical, counseling, school and combined professional-scientific psychology; predoctoral internship programs in professional psychology; and postdoctoral residency programs in professional psychology.

Title IV Note: *Accreditation by this agency does not enable the entities it accredits to establish eligibility to participate in Title IV programs.*

Susan Zlotlow, Director
Office of Program Consultation and Accreditation
750 First Street, NE
Washington, DC 20002-4242
Tel. (202) 336-5979, Fax (202) 336-5978
E-mail address: szlotlow@apa.org
Web address: www.apa.org/ed/accreditation

American Speech-Language-Hearing Association, Council on Academic Accreditation in Audiology and Speech-Language Pathology

1967/2003/S2008

Scope of recognition: the accreditation and preaccreditation (Accreditation Candidate) throughout the United States of education programs in audiology and speech-language pathology leading to the first professional or clinical degree at the master's or doctoral level, and the accreditation of these programs offered via distance education.

Title IV Note: *Accreditation by this agency does not enable the entities it accredits to establish eligibility to participate in Title IV programs.*

Patrima L. Tice
Director of Credentialing
2200 Research Boulevard
Rockville, Maryland 20850-3289
Tel. (301) 897-5700, Fax (301) 571-0457
E-mail address: ptice@asha.org
Web address: www.asha.org

American Veterinary Medical Association, Council on Education

1952/2007/F2011

Scope of recognition: the accreditation and preaccreditation ("Reasonable Assurance") in the United States of programs leading to professional degrees (D.V.M. or D.M.D.) in veterinary medicine.

Title IV Note: *Accreditation by this agency does not enable the entities it accredits to establish eligibility to participate in Title IV programs.*

David E. Granstrom,
Director, Education and Research
1931 North Meacham Road, Suite 100
Schaumburg, Illinois 60173
Tel. (847) 925-8070, (800) 248-2862, Fax (847) 925-9329
E-mail address: dgranstrom@avma.org
Web address: www.avma.org

Commission on Accreditation of Healthcare Management Education

1970/2007/S2012

Scope of recognition: the accreditation throughout the United States of graduate programs in healthcare management.

Title IV Note: *Accreditation by this agency does not enable the entities it accredits to establish eligibility to participate in Title IV programs.*

John S. Lloyd, President and CEO
Director of Accreditation Operations
2000 14th Street North, Suite 780
Arlington, Virginia 22201
Tel. (703) 894-0960, Fax (703) 894-0941
E-mail address: jlloyds@cahme.org
Web address: www.cahme.org

Commission on Collegiate Nursing Education

2000/2007/F2011

Scope of recognition: the accreditation of nursing education programs in the United States, at the baccalaureate and graduate degree levels, including programs offering distance education.

Title IV Note: *Accreditation by this agency does not enable the entities it accredits to establish eligibility to participate in Title IV programs.*

Jennifer L. Butlin, Director
One Dupont Circle NW, Suite 530
Washington, DC 20036-1120
Tel. (202) 887-6791, Fax (202) 887-8476
E-mail address: jbutlin@aacn.nche.edu
Web address: www.aacn.nche.edu/accreditation/index.htm

Council on Accreditation of Nurse Anesthesia Educational Programs

1955/2007/S2012

Scope of recognition: the accreditation of institutions and programs of nurse anesthesia within the United States at the post master's certificate, master's, or doctoral degree levels, including programs offering distance education.

Title IV Note: *Only hospital-based nurse anesthesia programs and freestanding nurse anesthesia institutions may use accreditation by this agency to establish eligibility to participate in Title IV programs*

Francis Gerbasi
Director of Accreditation and Education
222 South Prospect, Suite 304
Park Ridge, Illinois 60068-4010
Tel. (847) 692-7050, Fax (847) 692-7137
E-mail address: fgerbasi@aana.com
Web address: www.aana.com

The Council on Chiropractic Education

1974/2006/S2011

Scope of recognition: the accreditation of programs leading to the Doctor of Chiropractic degree and single-purpose institutions offering the Doctor of Chiropractic program.

Title IV Note: *Only freestanding schools or colleges of chiropractic may use accreditation by this agency to establish eligibility to participate in Title IV programs.*

Lee Van Dusen, Executive Director
8049 N. 85th Way
Scottsdale, Arizona 85258-4321
Tel. (480) 443-8877, Fax (480) 483-7333
E-mail address: cce@cce-usa.org
Web address: www.cce-usa.org

Council on Education for Public Health

1974/2007/S2012

Scope of recognition: the accreditation within the United States of schools of public health and public health programs outside schools of public health, at the baccalaureate and graduate degree levels, including those

offered via distance education.

Title IV Note: *Accreditation by this agency does not enable the entities it accredits to establish eligibility to participate in Title IV programs.*

Laura Rasar King, Executive Director
800 Eye Street, NW, Suite 202
Washington, DC 20001-3710
Tel. (202) 789-1050, Fax (202) 789-1895
E-mail address: lking@ceph.org
Web address: www.ceph.org

Council on Naturopathic Medical Education

2003/2005/S2008

Scope of recognition: the accreditation and pre-accreditation throughout the United States of graduate-level, four-year naturopathic medical education programs leading to the Doctor of Naturopathic Medicine (N.M.D.) or Doctor of Naturopathy (N.D.).

Title IV Note: *Accreditation by this agency does not enable the entities it accredits to establish eligibility to participate in Title IV programs.*

Daniel Seitz
Executive Director
P.O. Box 178
Great Barrington, Massachusetts 01230
Tel. (413) 528-8877, Fax (413) 528-8880
E-mail address: council@cnme.org
Web address: www.cnme.org

Joint Review Committee on Educational Programs in Nuclear Medicine Technology

1974/2006/S2011

Scope of recognition: the accreditation of higher education programs for the nuclear medicine technologist.

Title IV Note: *Accreditation by this agency does not enable the entities it accredits to establish eligibility to participate in Title IV programs.*

Jan M Winn, Executive Director
2000 W. Danforth Road
Ste. 130, #203
Edmond, Oklahoma 73003
Tel. (405) 285-0546, Fax (405) 285-0579
E-mail address: jrcnmt@coxinet.net
Web address: www.jrcnmt.org

Joint Review Committee on Education in Radiologic Technology

1957/2006/S2011

Scope of recognition: the accreditation of educational programs in radiography, magnetic resonance, radiation therapy, and medical dosimetry, including those offered via distance education, at the certificate, associate, and baccalaureate levels.

Title IV Note: *Only hospital-based radiologic technology programs and freestanding radiologic technology institutions may use accreditation by this agency to establish eligibility to participate in Title IV programs.*

Leslie F. Winter, Chief Executive Director
20 North Wacker Drive, Suite 2850
Chicago, Illinois 60606-3182
Tel. (312) 704-5300, Fax (312) 704-5304
E-mail address: mail@jrcert.org
Web address: www.jrcert.org

Liaison Committee on Medical Education

1952/2007/S2012

Scope of recognition: the accreditation of medical education programs within the United States leading to

the M.D. degree.

Title IV Note: *Accreditation by this agency does not enable the entities it accredits to establish eligibility to participate in Title IV programs.*

The LCME is administered in odd-numbered years, beginning each July 1, by:

Barbara Barzanski, Interim Secretary
Council on Medical Education of the American Medical Association
515 North State Street
Chicago, Illinois 60610
Tel. (312) 464-1690, Fax (312) 464-5830
E-mail address: barbara_barzansk@ama-assn.org
Web address: www.ama-assn.org

The LCME is administered in even-numbered years, beginning each July 1, by:

Dan Hunt, Secretary
Association of American Medical Colleges
2450 N Street, N.W.
Washington, DC 20037
Tel. (202) 828-0596, Fax (202) 828-1125
E-mail address: dhunt@aamc.org
Web address: www.lcme.org

Midwifery Education Accreditation Council

2001/2003/S2009

Scope of recognition: the accreditation and pre-accreditation throughout the United States of direct-entry midwifery educational institutions and programs conferring degrees and certificates, including the accreditation of such programs offered via distance education.

Title IV Note: *Only freestanding direct-entry midwifery educational institutions may use accreditation by this agency to establish eligibility to participate in Title IV programs.*

Jo Anne Myers-Ciecko, Executive Director
P.O. Box 984
La Conner, Washington 98257
Tel. (360) 466-2080, Fax (480) 907-2936
E-mail address: executivedirector@meacschools.org
Web address: www.meacschools.org

National League for Nursing Accrediting Commission

1952/2007/F2011

Scope of recognition: the accreditation in the United States of programs in practical nursing, and diploma, associate, baccalaureate and higher degree nurse education programs.

Title IV Note: *Only diploma programs and practical nursing programs not located in a regionally accredited college or university may use accreditation by this agency to establish eligibility to participate in Title IV programs.*

Sharon J. Tanner, Executive Director
3343 Peachtree Road NE, Suite 500
Atlanta, Georgia 30326
Tel. (404) 975-5000, Fax (404) 975-5020
E-mail address: stanner@nlac.org
Web address: www.nlnac.org

 [Top](#)

ACCREDITING AGENCIES RECOGNIZED FOR THEIR PREACCREDITATION CATEGORIES

Under the terms of the Higher Education Act and other Federal legislation providing funding assistance to postsecondary education, an institution or program is eligible to apply for participation in certain Federal programs if, in addition to meeting other statutory requirements, it is accredited by a nationally recognized accrediting agency or if it is an institution or program with respect to which the U.S. Secretary of Education has determined that there is satisfactory assurance the institution or program will meet the accreditation standards of such an agency or association within a reasonable time. An institution or program may establish satisfactory assurance of accreditation by acquiring preaccreditation status with a nationally recognized agency that has been recognized by the U.S. Secretary of Education for the award of such status. According to the Criteria for Nationally Recognized Accrediting Agencies, if an accrediting agency has developed a preaccreditation status, it must demonstrate that it applies criteria and follows procedures that are appropriately related to those used to award accreditation status. The criteria for recognition also require an agency's standards for preaccreditation to permit an institution or program to hold preaccreditation no more than five years.

The following is a list of accrediting agencies recognized for their preaccreditation categories and the categories that are recognized:

Regional Institutional Accrediting Agencies

MIDDLE STATES ASSOCIATION OF COLLEGES AND SCHOOLS--
Commission on Higher Education: Candidate for Accreditation

NEW ENGLAND ASSOCIATION OF SCHOOLS AND COLLEGES:
Commission on Institutions of Higher Education: Candidate for Accreditation
Commission on Technical and Career Institutions: Candidate for Accreditation

NORTH CENTRAL ASSOCIATION OF COLLEGES AND SCHOOLS--
Commission on Institutions of Higher Education: Candidate for Accreditation
Commission on Accreditation and School Improvement, Board of Trustees

NORTHWEST COMMISSION ON COLLEGES AND UNIVERSITIES

SOUTHERN ASSOCIATION OF COLLEGES AND SCHOOLS--
Commission on Colleges: Candidate for Accreditation

WESTERN ASSOCIATION OF SCHOOLS AND COLLEGES--
Accrediting Commission for Community and Junior Colleges: Candidate for Accreditation
Accrediting Commission for Schools: Candidate for Accreditation
Accrediting Commission for Senior Colleges and Universities: Candidate for Accreditation

National Institutional and Specialized Accrediting Bodies

ACCREDITATION COUNCIL FOR PHARMACY EDUCATION: Candidate, Precandidate

AMERICAN ACADEMY FOR LIBERAL EDUCATION: Candidate for Accreditation

AMERICAN ASSOCIATION FOR MARRIAGE AND FAMILY THERAPY
Commission on Accreditation for Marriage and Family Therapy Education: Candidacy

AMERICAN COLLEGE OF NURSE-MIDWIVES
Accreditation Commission for Midwifery Education: Preaccreditation

AMERICAN OPTOMETRIC ASSOCIATION--
Council on Optometric Education: Reasonable Assurance and Preliminary Approval (for professional degree programs);
Candidacy Pending (for optometric residency programs in Veterans' Administration facilities)

AMERICAN OSTEOPATHIC ASSOCIATION--
Bureau of Professional Education: Provisional Accreditation

AMERICAN PHYSICAL THERAPY ASSOCIATION--
Commission on Accreditation in Physical Therapy Education: Candidate for Accreditation

AMERICAN PODIATRIC ASSOCIATION--
Council on Podiatric Medical Education: Candidate Status

AMERICAN SPEECH-LANGUAGE-HEARING ASSOCIATION--
Council on Academic Accreditation: Candidate Status

AMERICAN VETERINARY MEDICAL ASSOCIATION--
Council on Education: Reasonable Assurance

ASSOCIATION FOR BIBLICAL HIGHER EDUCATION--
Commission on Accrediting: Candidate for Accreditation

ASSOCIATION OF ADVANCED RABBINICAL AND TALMUDIC SCHOOLS--
Accreditation Commission: Correspondent, Candidate

COMMISSION ON ACCREDITING OF THE ASSOCIATION OF THEOLOGICAL SCHOOLS: Candidate for Accredited Membership

COUNCIL ON EDUCATION FOR PUBLIC HEALTH: Preaccreditation

COUNCIL ON NATUROPATHIC MEDICAL EDUCATION: Pre-accreditation

COUNCIL ON OCCUPATIONAL EDUCATION: Candidate for Accreditation

MIDWIFERY EDUCATION ACCREDITATION COUNCIL: Preaccreditation

TEACHER EDUCATION ACCREDITATION COUNCIL
Accreditation Committee: Pre-accreditation

TRANSNATIONAL ASSOCIATION OF CHRISTIAN COLLEGES AND SCHOOLS: Candidate for Accreditation

ACCREDITING AGENCIES RECOGNIZED FOR TITLE IV PURPOSES

The following is a list of accrediting agencies whose accreditation enables the institutions they accredit to establish eligibility to participate in the Federal student financial assistance programs administered by the Department under Title IV of the Higher Education Act of 1965 as amended.

*ACCREDITATION COMMISSION FOR ACUPUNCTURE AND ORIENTAL MEDICINE (FORMERLY NACAOM)

Title IV Note: *Only freestanding schools or colleges of acupuncture or Oriental medicine may use accreditation by this agency to establish eligibility to participate in Title IV programs.*

ACCREDITING BUREAU OF HEALTH EDUCATION SCHOOLS
(recognition includes distance education)

Title IV Note: *Only freestanding allied health education schools may use accreditation by this agency to establish eligibility to participate in Title IV programs.*

ACCREDITING COMMISSION OF CAREER SCHOOLS AND COLLEGES
(recognition includes distance education)

ACCREDITING COUNCIL FOR CONTINUING EDUCATION AND TRAINING

(recognition includes distance education)

Title IV Note: *Only those institutions classified by this agency as "vocational" may use accreditation by this agency to establish eligibility to participate in Title IV programs.*

ACCREDITING COUNCIL FOR INDEPENDENT COLLEGES AND SCHOOLS

(recognition includes distance education)

*AMERICAN ACADEMY FOR LIBERAL EDUCATION

Title IV Note: *Only institutions of higher education accredited by this agency may use that accreditation to establish eligibility to participate in Title IV programs.*

AMERICAN BAR ASSOCIATION, COUNCIL OF THE SECTION OF LEGAL EDUCATION AND ADMISSIONS TO THE BAR

Title IV Note: *Only freestanding law schools may use accreditation by this agency to establish eligibility to participate in Title IV programs.*

AMERICAN BOARD OF FUNERAL SERVICE EDUCATION, COMMITTEE ON ACCREDITATION

(recognition includes distance education)

Title IV Note: *Only freestanding schools or colleges of funeral service or mortuary science may use accreditation by this agency to establish eligibility to participate in Title IV programs.*

AMERICAN COLLEGE OF NURSE-MIDWIVES, ACCREDITATION COMMISSION FOR MIDWIFERY EDUCATION

(recognition includes distance education)

Title IV Note: *Only freestanding institutions of midwifery education may use accreditation by this agency to establish eligibility to participate in Title IV programs.*

AMERICAN DIETETIC ASSOCIATION, COMMISSION ON ACCREDITATION APPROVAL FOR DIETETICS EDUCATION

(recognition includes distance education)

Title IV Note: *Only postbaccalaureate dietetic internship programs may use accreditation by this agency to establish eligibility to participate in Title IV programs.*

*AMERICAN OSTEOPATHIC ASSOCIATION, COMMISSION ON OSTEOPATHIC COLLEGE ACCREDITATION

Title IV Note: *Only freestanding schools or colleges of osteopathic medicine may use accreditation by this agency to establish eligibility to participate in Title IV programs.*

*AMERICAN PODIATRIC MEDICAL ASSOCIATION, COUNCIL ON PODIATRIC MEDICAL EDUCATION

Title IV Note: *Only freestanding schools or colleges of podiatric medicine may use accreditation by this agency to establish eligibility to participate in Title IV programs.*

*ASSOCIATION FOR BIBLICAL HIGHER EDUCATION, COMMISSION ON ACCREDITATION

(recognition includes distance education)

*ASSOCIATION OF ADVANCED RABBINICAL AND TALMUDIC SCHOOLS, ACCREDITATION COMMISSION

*COMMISSION ON ACCREDITING OF THE ASSOCIATION OF THEOLOGICAL SCHOOLS

(recognition includes distance education)

Title IV Note: *Only freestanding institutions, colleges, or seminaries of theology may use accreditation by this agency to establish eligibility to participate in Title IV programs.*

COMMISSION ON MESSAGE THERAPY ACCREDITATION

THE COUNCIL ON CHIROPRACTIC EDUCATION, COMMISSION ON ACCREDITATION

Title IV Note: *Only freestanding schools or colleges of chiropractic may use accreditation by this agency to establish eligibility to participate in Title IV programs.*

COUNCIL ON ACCREDITATION OF NURSE ANESTHESIA EDUCATIONAL PROGRAMS

(recognition includes distance education)

Title IV Note: *Only hospital-based nurse anesthesia programs and freestanding nurse anesthesia institutions may use accreditation by this agency to establish eligibility to participate in Title IV programs.*

*COUNCIL ON OCCUPATIONAL EDUCATION, COMMISSION (FORMERLY SACS-COEI)

(recognition includes distance education)

DISTANCE EDUCATION AND TRAINING COUNCIL, ACCREDITING COMMISSION

(recognition includes distance education)

Title IV Note: *Only accredited institutions that are certified by the agency as accredited for Title IV purposes may use accreditation by this agency to establish eligibility to participate in Title IV programs.*

JOINT REVIEW COMMITTEE ON EDUCATION IN RADIOLOGIC TECHNOLOGY

(recognition includes distance education)

Title IV Note: *Only hospital-based radiologic technology programs and freestanding radiologic-technology institutions may use accreditation by this agency to establish eligibility to participate in Title IV programs.*

*MIDDLE STATES ASSOCIATION OF COLLEGES AND SCHOOLS, COMMISSION ON HIGHER EDUCATION

(recognition includes distance education)

MIDDLE STATES COMMISSION ON SECONDARY SCHOOLS

(recognition includes distance education)

Title IV Note: *Only those vocational/technical schools accredited by this agency that offer non-degree, postsecondary education may use that accreditation to establish eligibility to participate in Title IV programs.*

MIDWIFERY EDUCATION ACCREDITATION COUNCIL

(recognition includes distance education)

Title IV Note: *Only freestanding, direct-entry midwifery educational institutions may use accreditation by this agency to establish eligibility to participate in the Title IV programs.*

MONTESSORI ACCREDITATION COUNCIL FOR TEACHER EDUCATION, COMMISSION ON ACCREDITATION

Title IV Note: *Only freestanding Montessori teacher education schools may use accreditation by this agency to establish eligibility to participate in Title IV programs. Further, that accreditation must have been granted in conjunction with the accrediting activities of the review committees listed above.*

NATIONAL ACCREDITING COMMISSION OF COSMETOLOGY ARTS & SCIENCES

NATIONAL ASSOCIATION OF SCHOOLS OF ART AND DESIGN, COMMISSION ON ACCREDITATION

(recognition includes distance education)

Title IV Note: *Only freestanding schools or colleges of art and design may use accreditation by this agency to establish eligibility to participate in Title IV programs.*

NATIONAL ASSOCIATION OF SCHOOLS OF DANCE, COMMISSION ON ACCREDITATION

(recognition includes distance education)

Title IV Note: *Only freestanding schools or colleges of dance may use accreditation by this agency to establish eligibility to participate in Title IV programs.*

NATIONAL ASSOCIATION OF SCHOOLS OF MUSIC, COMMISSION ON ACCREDITATION

(recognition includes distance education)

Title IV Note: *Only freestanding schools or colleges of music may use accreditation by this agency to establish eligibility to participate in Title IV programs.*

NATIONAL ASSOCIATION OF SCHOOLS OF THEATRE, COMMISSION ON ACCREDITATION

(recognition includes distance education)

Title IV Note: *Only freestanding schools or colleges of theatre may use accreditation by this agency to establish eligibility to participate in Title IV programs.*

NATIONAL LEAGUE FOR NURSING ACCREDITING COMMISSION

Title IV Note: *Only diploma programs and practical nursing programs not located in a regionally accredited college or university may use accreditation by this agency to establish eligibility to participate in Title IV programs.*

*NEW ENGLAND ASSOCIATION OF SCHOOLS AND COLLEGES, COMMISSION ON INSTITUTIONS OF HIGHER EDUCATION

(recognition includes distance education)

*NEW ENGLAND ASSOCIATION OF SCHOOLS AND COLLEGES, COMMISSION ON TECHNICAL AND CAREER INSTITUTIONS

Title IV Note: *Any public vocational/technical schools accredited by this agency that offer non-degree, postsecondary education and that wish to use that accreditation to establish eligibility to participate in Title IV programs must be accredited by the agency as offering education through the 13th and/or 14th grade level.*

NEW YORK STATE BOARD OF REGENTS, AND THE COMMISSIONER OF EDUCATION

*NORTH CENTRAL ASSOCIATION OF COLLEGES AND SCHOOLS, THE HIGHER LEARNING COMMISSION

(recognition includes distance education)

*NORTH CENTRAL ASSOCIATION COMMISSION ON ACCREDITATION AND SCHOOL IMPROVEMENT, BOARD OF TRUSTEES

Title IV Note: *Only those vocational/technical schools accredited by this agency that offer non-degree, postsecondary education may use that accreditation to establish eligibility to participate in Title IV programs.*

*NORTHWEST COMMISSION ON COLLEGES AND UNIVERSITIES

(recognition includes distance education)

*SOUTHERN ASSOCIATION OF COLLEGES AND SCHOOLS, COMMISSION ON COLLEGES

(recognition includes distance education)

*TRANSNATIONAL ASSOCIATION OF CHRISTIAN COLLEGES AND SCHOOLS, ACCREDITING COMMISSION

(recognition includes distance education)

*WESTERN ASSOCIATION OF SCHOOLS AND COLLEGES, ACCREDITING COMMISSION FOR COMMUNITY AND JUNIOR COLLEGES

(recognition includes distance education)

*WESTERN ASSOCIATION OF SCHOOLS AND COLLEGES, ACCREDITING COMMISSION FOR SCHOOLS

Title IV Note: *Only adult and postsecondary schools accredited by this agency that offer postsecondary programs below the degree level may use accreditation by this agency to establish eligibility to participate in Title IV programs.*

*WESTERN ASSOCIATION OF SCHOOLS AND COLLEGES, ACCREDITING COMMISSION FOR SENIOR COLLEGES AND UNIVERSITIES

(recognition includes distance education)

* Preaccreditation status may be used as an alternative to full accreditation by any public or private non-profit institutions accredited by this agency for the purpose of establishing eligibility to participate in Title IV programs. Please note that preaccreditation is not available as an option for establishing such eligibility by a for-profit institution accredited by this agency.

N O T E: "Freestanding" is defined as not part of a larger college or university that is accredited by a regional accrediting agency or another nationally recognized institutional accrediting agency. In general, a freestanding institution is a separate single-purpose institution that offers a specialized program of study in a particular field.

ACCREDITING AGENCIES RECOGNIZED FOR DISTANCE EDUCATION

The following is a list of accrediting agencies recognized for Distance Education.

Accrediting Bureau of Health Education Schools

Accrediting Commission of Career Schools and Colleges

Accrediting Council for Continuing Education and Training

Accrediting Council for Independent Colleges and Schools

American Board of Funeral Service Education, Committee on Accreditation

American College of Nurse-Midwives, Accreditation Commission for Midwifery Education

American Dental Association, Commission on Dental Accreditation

American Dietetic Association, Commission on Accreditation for Dietetics Education

American Occupational Therapy Association, Accreditation Council for Occupational Therapy Education

American Physical Therapy Association, Commission on Accreditation in Physical Therapy Education

American Speech-Language-Hearing Association, Council on Academic Accreditation in Audiology and Speech-Language Pathology

Association for Biblical Higher Education, Commission on Accreditation

Commission on Accrediting of the Association of Theological Schools

Commission on Collegiate Nursing Education

Council on Accreditation of Nurse Anesthesia Educational Programs

Council on Education for Public Health

Council on Occupational Education

Distance Education and Training Council, Accrediting Commission

Joint Review Committee on Education in Radiologic Technology

Middle States Association of Colleges and Schools, Commission on Higher Education

Middle States Commission on Secondary Schools

Midwifery Education Accreditation Council

Montessori Accreditation Council for Teacher Education, Commission on Accreditation

National Association of Schools of Art and Design, Commission on Accreditation

National Association of Schools of Dance, Commission on Accreditation

National Association of Schools of Music, Commission on Accreditation

National Association of Schools of Theatre, Commission on Accreditation

National Council for Accreditation of Teacher Education

New England Association of Schools and Colleges, Commission on Institutions of Higher Education

New York Board of Regents and the Commission of Education

North Central Association of Colleges and Schools, The Higher Learning Commission

Northwest Commission on Colleges and Universities

Southern Association of Colleges and Schools, Commission on Colleges

Transnational Association of Christian Colleges and Schools, Accreditation Commission

Western Association of Schools and Colleges, Accrediting Commission for Community and Junior Colleges

Western Association of Schools and Colleges, Accrediting Commission for Senior Colleges and Universities

**Council on Postsecondary Education
April 23, 2010**

2011-15 Strategic Agenda Development Update

At the April 23 meeting, Lisa Osborne, chair of the CPE Strategic Agenda Work Group, will give an update on the development of the 2011-15 Strategic Agenda and will share with the Council suggested vision and mission statements from the work group and members of the institutional advisory committee.

Staff preparation by Lee Nimocks

Council on Postsecondary Education
April 23, 2010

2008-09 Accountability Report

The Council staff has completed the *2008-09 Accountability Report*, an annual publication mandated by KRS 164.020. The purpose of the report is to annually review progress toward the achievement of key performance goals, as well as initiatives that are underway at the statewide level to promote improvement. Each key indicator is assigned an arrow: up arrows indicate improvement, down arrows indicate a decline, and horizontal arrows indicate little or no change over the previous year's performance.

This is the last year the report will reflect the 2005-10 Public Agenda, which is organized around the Five Questions of reform. The Council is currently developing a new strategic agenda and more informative performance measures for 2011-15.

2008-09 Results

The Council currently tracks 27 key indicators at the statewide and institution level. Updates were not available for eight of these measures, which primarily rely on data provided by the national report card on higher education (*Measuring Up*), published every other year. A status was not assigned to the ACT indicator since the 2009 average composite score reflects 100 percent of Kentucky high school students and cannot fairly be compared to 2008, when only 72 percent of high school students took the test.

This year, the system improved on nine indicators, declined on five, and held steady on four. Most notably:

Making Progress:

- The total number of degrees and credentials awarded statewide increased slightly (0.7 percent), from 52,031 in 2007-08 to 52,383 in 2008-09.
- Total degrees awarded (bachelor's and higher) were up 1.4 percent at four-year public universities and 5.4 percent at independent institutions. Bachelor's degrees grew 0.9 percent, from 19,227 to 19,403. Associate degrees at KCTCS increased 5.8 percent, from 6,485 to 6,861.
- Every public university showed improvement on the National Survey of Student Engagement, which surveys first-year and senior students on items correlated with effective educational practice.
- Graduate enrollment statewide was up 1 percent from last year, from 27,664 to 27,942.

Losing Ground:

- Only two public universities (NKU and UofL) improved their 2007-08 graduation rates over the previous year.
- Undergraduate enrollment fell slightly (0.4 percent) in 2008, the first decline since the beginning of postsecondary reform in 1997.
- 9,382 adults earned a GED credential in 2009, down from 10,307 in 2008.

Holding Steady:

- Transfers from two- to four-year institutions increased 3.9 percent, from 4,278 in 2007-08 to 4,445 in 2008-09. However, the 2008-09 result includes 260 students who transferred from KCTCS to public universities in the summer, a category not included in previous years. Without these students, the total number of transfers would have declined by 2.2 percent.
- The percentage of GED graduates going on to college within two years remained at 21 percent.

The full report can be downloaded from the Council's Web site:
www.cpe.ky.gov/planning/statusreports.

**Council on Postsecondary Education
April 23, 2010**

**Transfer Update:
New Definition of Transfer and 2010 Transfer Student Survey**

Ensuring students can successfully transfer from the Kentucky Community and Technical College System to public and independent four-year universities and colleges is essential to improving the education pipeline and realizing the Commonwealth's educational attainment goals.

The range and complexity of the issues surrounding transfer in Kentucky are similar to those experienced by other states, and it has emerged as a primary issue in the national policy agenda for higher education and the Governor's Higher Education Work Group this past year. New legislation, passed in the recent legislative session, is drawing increased attention to the Commonwealth's transfer goals and strategies.

Over the past year, new data have been collected to gain a broader and deeper understanding of transfer issues. The definition of transfer was expanded to account for summer transfers, KCTCS transfers to out-of-state institutions, students transferring additional credits from KCTCS to four-year institutions, total KCTCS credits accepted by four-year institutions, the transfer rate of KCTCS students into Kentucky's public universities, and the scope of transfer into four-year institutions. Baseline data for the 2008-09 academic year will be presented at the April 23 meeting.

In addition, the Statewide Transfer Committee and Statewide Assessment Work Group recently completed a major research project that surveyed public university students who have transferred in from the KCTCS system to better understand their experiences. The survey results provide a better understanding of the factors contributing to successful transfer and barriers that might derail a student's plans to continue his or her education at the next level. Findings will be presented at the meeting.

Staff preparation by Adina O'Hara and Heidi Hiemstra

Dig Discovers Evidence of 700-Year-Old Village

While most of their classmates learn their way around Richmond as they keep one eye on the future, some EKU students have been examining what remains of a 700-year-old civilization just south of the community.

Over four recent summers, dozens of students in Dr. Kelli Carmean's Field Methods in Archaeology course have been digging beneath a ridge that overlooks the Muddy Creek floodplain on the Blue Grass Army Depot. Their painstaking work at the Broadus site has uncovered the remains of a Fort Ancient village site that likely spanned about 25 years approximately 1300 A.D.

The EKU archaeological research has documented the site as a medium-sized, sedentary circular village, with a cleared plaza area in the center, a low burial mound, approximately 70 centimeters in height and 25 meters in diameter, and simple individual houses. At most, Carmean said, the village was home to approximately 200 men, women and children.

Fieldwork uncovered a wide range of artifacts. About 100 small triangular arrowheads attest to the site's Late Prehistoric Period occupation, according to Carmean, who added that slight stylistic differences suggest a later re-occupation of the site, perhaps in the late 17th century. A variety of earlier spear points were recovered as well, indicating that their ancestors' weapons played a role in their local identity. Large quantities of ceramic sherds also have been found, as well as remains of fire hearths, ash pits, postholes and human burials.

The Depot site was an ideal marriage for Carmean's research needs.

"I needed something local, a site my students could access and study," she said. "I'm interested in sedentary village farm life, and this site popped up at the right time. All the characteristics and qualities converged perfectly as a place to establish a long-term archaeology field school. And the Depot was really interested so they could learn more about cultural resources on their property."



EKU students examine evidence of a 700-year-old village uncovered in Madison County.

Professor Receives Award for Water Resources Research

Dr. Alice Jones, director of the Eastern Kentucky Environmental Research Institute (EK-ERI) at EKU, received the 2010 Bill Barfield Award for Outstanding Contributions in Water Resources Research from the Kentucky Water Resources Research Institute at the University of Kentucky.

The Barfield Award was established in 2005 to honor the Commonwealth's foremost researchers in water-related fields.

Earlier this year, Jones was named the Commonwealth's Office of Experimental Program to Stimulate Competitive Research (EPSCoR) "Young Investigator."

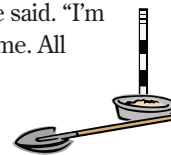
Jones founded the EK-ERI in 2005 with start-up funds from Kentucky's National Science Foundation-EPSCoR program, where she coordinates the Institute's interdisciplinary and multi-institutional research and outreach approach to understanding eastern Kentucky's ecosystems.

Her 17 years of teaching, research, and applied community service has



centered on the relationship between land use and water quality, and particularly the relationship of water quality and community health. Her most recent work has focused on both large- and small-scale watershed studies of water quality in the coal country of Appalachian Kentucky.

Since 2006, Jones has spearheaded and supervised the "Big Dip" community-based sampling project in Eastern Kentucky — a diagnostic sampling of DO, pH, conductivity, iron, and household contaminants from more than 1,700 first-order headwater streams in eastern Kentucky. The project, believed to be the largest and most geographically intensive diagnostic sampling database of water quality in eastern Kentucky headwater streams, has highlighted the pervasive high conductivity levels throughout the region.



Best Colleges Online Honors EKU for Retention Rates

EKU is among the top 10 "Online Colleges with the Highest Retention Rates" and the top 25 overall in national rankings published by Best Colleges Online.

Best Colleges Online collected online education information directly from the U.S. Department of Education to create its "Best Colleges" rankings.

EKU ranks ninth on the list of colleges and universities rated with the highest retention rates and 21st in the overall category, which is calculated using the number of students, graduation rates, the number of online degree programs, and the school's retention rates. Best Colleges Online combined these together to derive a total student satisfaction score.

EKU's online enrollment has more than tripled in recent years, increasing from 4,337 credit hours in Fall 2004 to 13,743 hours in Fall 2008.

Unique Financial Literacy Program Will Serve Eastern Kentuckians

With state and federal officials in attendance, EKU announced in February the establishment of a financial literacy training program designed specifically to serve low- and moderate-income individuals in eastern Kentucky.

The University will prepare students and community leaders to become certified financial literacy instructors, and the instructors, in turn, will help community members to make informed financial decisions and take control of their financial future.

The Community Change Program “without a doubt makes (EKU) a leader in the Commonwealth and, from what I can tell, in the nation,” Kentucky State Treasurer Todd Hollenbach said at a news conference announcing the program. Financial literacy “is an absolute necessity for anybody to be successful.”

Hollenbach said no campaign theme resonated more with voters than the importance of financial literacy. “A number of our counties are blessed with a lot of resources, but the vast majority do not have the resources that counties with large cities do.”

As part of the program, certified trainers will identify community partners to help understand the financial literacy needs of communities and then develop customized training solutions to effect community change.

Michelle Greene, deputy assistant secretary for financial education and financial access with the U.S. Department of the Treasury, said she hopes the program “can be a model for programs around the country.”



From left, Michelle Greene, deputy assistant secretary for financial education and financial access with the U.S. Department of the Treasury, chats with Ian Mooers, director of EKU's Center for Economic Development, Entrepreneurship and Technology; and Dr. Oliver Feltus, chair of EKU's Department of Accounting, Finance and Information Systems.

EKU and Minority Efforts

“Call Me MISTER” Attracts African American Males into Teaching

African American children comprise 17 percent of the student population nationwide, but their chances of seeing an African-American male teacher in front of their classroom are about 1 in 100.

Hoping to close that gap, EKU recently became the first college or university in the Commonwealth or any adjacent state to join the Call Me MISTER (Mentors Instructing Students Toward Effective Role Modeling) program, a national initiative begun at Clemson University that seeks to attract more African American males to the teaching profession. The MISTER acronym also refers to the classic film “In the Heat of the Night,” in which Sidney Poitier’s character demands respect with the line, “They call me Mister Tibbs!”

Five EKU freshmen are enrolled in the program, which is housed in and funded by the University’s College of Education, but the program is open to all undergraduate and graduate students who plan to pursue a career in elementary or middle school teaching.

“We want to help our MISTER Scholars frame their consciousness around a commitment to education, develop a sense of responsibility and gain the courage to succeed,” said Dr. Sherwood Thompson, assistant dean of EKU’s College of Education.

Participants in the program must be Eastern students from Kentucky, show a strong interest in the teaching profession and maintain at least a “B” average. In order to be selected, they also must complete two essays, one explaining why they want to be an educator and another about how the MISTER program will help them achieve their goals, and participate in an interview.

“This is not a remediation program,” emphasized Dr. Norman Powell, director of teacher education services for the College of Education. “We’re looking for the best and brightest.”

Once in the program, MISTER Scholars will receive additional academic support, perform community service (such as tutoring high school students), attend numerous professional development conferences and workshops and participate in various exercises to build their leadership skills.



EKU among Top Gainers in Minority Graduation Rates

EKU has earned national recognition for the improvement in its graduation rate for underrepresented students.

In a recent report published by The Education Trust, Eastern headed a list of all public colleges and universities nationwide that completely closed the graduation-rate gap between non-minority students and minority students between 2002 and 2007. EKU finished second among public master’s degree-granting colleges and universities in a comparison of the “top gainers” from 2002 to 2007.

From 2002 to 2007, Eastern increased its six-year graduation rate for minority students from 13.8 percent to 38.5 percent, essentially matching the University’s non-minority graduation rate. The gap closure at EKU, from 20.8 percent in 2002 to an almost negligible 0.8 percent in 2007, ranked first among all public master’s institutions.

Sandra Moore, special assistant to the provost for University diversity, attributed the improvement to “one-on-one interaction with students at every level. Students know when you care about them.”

KCTCS GOOD NEWS REPORT

HIGHER EDUCATION BEGINS HERE

APRIL 2010

KCTCS and Berea College Enter Transfer Partnership

KCTCS signed a unique transfer partnership agreement with Berea College on April 6 at the Boone Tavern Hotel of Berea College, where KCTCS President Michael B. McCall and Berea College President Larry D. Shinn held a signing ceremony.

The agreement is informally called “The Double Triple” because of the goal to eventually triple the number of transfers from KCTCS to Berea College and also in reference to the state’s 2020 goal of doubling the number of baccalaureate degrees.

The transfer agreement includes two components. The first is a general agreement which provides a framework for the transfer of courses, as well as support for KCTCS students who receive an associate degree and are accepted for admission to Berea College. The second component is the African-American Transfer Initiative to encourage African-American students to attend KCTCS and receive an associate degree, and then transfer coursework to Berea College.

“I am excited about the possibilities this unique transfer agreement will offer students at both KCTCS and Berea College. At KCTCS, we support improving the ease with which students can transfer to four-year institutions in our state,” said Dr. McCall. “This agreement will provide a structure that will allow KCTCS students to transfer



ABOVE: KCTCS President Michael B. McCall and Berea College President Larry Shinn sign the transfer partnership agreement.

academic credit to Berea College and to successfully continue on their path to a baccalaureate degree.”

The agreement will help both KCTCS and Berea College continue to serve the Commonwealth, and it is part of the public and private institutional partnerships encouraged in HB160, which was approved

by the state legislature on April 1. Representative Carl Rollins, sponsor of HB160, also spoke at the Berea event.

In addition, the African-American Transfer Initiative will begin as a pilot between KCTCS and Berea College for transfer applications for admission in the fall 2010-2011 academic year. The pilot program will begin in



KCTCS GOOD NEWS REPORT

spring 2010, and will focus on facilitating the transfer of African-American graduates, particularly from central Appalachia, from five KCTCS colleges to Berea College. The five colleges are: Ashland Community and Technical College, Big Sandy Community and Technical College, Hazard Community and Technical College, Somerset Community College, and Southeast Community and Technical College. As part of this pilot, Berea will accept African-American students from KCTCS who fulfill the qualifications for the program and admit them to Berea College for the 2010-2011 academic year.

The overall goal of this pilot, contingent upon the success and capacity of Berea College to increase the number of transfers, is to expand the African-American Transfer Initiative to all KCTCS colleges in the fall of 2011.



ABOVE: President McCall speaks with Big Sandy President George Edwards.



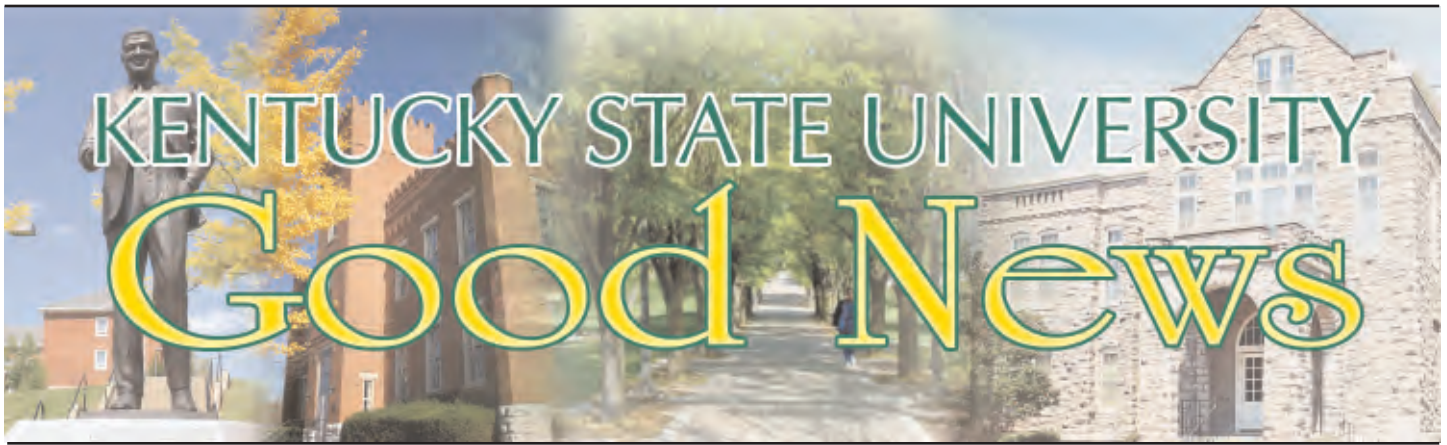
LEFT: Nicole McDonald, System Director for Transfer and Retention, and Natalie Gibson, System Director of Cultural Diversity, presented transfer agreement details at the press conference.

In 2008-2009, more than 15,000 KCTCS students transferred to a four-year institution. The partnership with Berea College will help to increase that number.

Community and technical colleges are an excellent value for students, particularly during these difficult economic times, because they provide an affordable and convenient pathway for students to pursue a baccalaureate degree.

The partnership with Berea College will allow KCTCS to continue to provide Kentucky with what it needs right now—real opportunity for real people in real time as KCTCS continues to transform lives and transform Kentucky.





Kentucky State University

April 2010

KSU Earns Accolades For Community Service Efforts



Kentucky State University was named to the President's Higher Education Community Service Honor Roll for the second year for its commitment to civic engagement and community

service. The Corporation for National and Community Service will present the award at its National Conference of Volunteering and Service in June in New York City.

"Kentucky State University's reputation as an engaged community partner and an institution committed to community service continues to grow," says **President Mary Evans Sias**. "While KSU is pleased to again be named to the President's Higher Education Community Service Honor Roll, we are not going to slow down. We want to increase our efforts and extend our reach even farther into the community."

This year, the organization was impressed with several of KSU's projects, including its many mentoring programs, the bone marrow donor registry program, the e-scraping and recycling program and the Spring Break trip to New Orleans, says **Irma Johnson**, KSU service learning coordinator. KSU also had a steady stream of community service efforts and civic engagements spearheaded by athletic

teams, Greek organizations and involved faculty and staff members, such as helping at nursing homes, working at community events and organizing activities for community youths.

Honda All-Star Team Finishes In Elite Eight

Kentucky State University finished in the Elite Eight of the Honda Campus All-Star Challenge National Championship Tournament on April 12 after falling to North Carolina Central University. The academic competition tests the knowledge of historically black college and university students on subjects ranging from academic material to pop culture and sports.

The team had defeated Tennessee State University, North Carolina A&T University, Southern University at New Orleans and two-time reigning champions Oakwood University in order to advance to the championship round. After overcoming technical difficulties and then leading by 100 points at the half, KSU lost by 45 points in the end.

This was the furthest KSU has gone in recent years, but the team of **Morgan Van Dunk**, captain **Kendra Joseph**, **James Lawson Whites** and **Leland Reynolds** expected to do well. At its pre-championship tournaments at Medgar Evers College and Morgan State University, Team Thorobred defeated all of the other teams, and Whites individually accumulated the most points.

Dr. Ivory Griskell is the team's adviser.



President Sias Attends Signing To Renew White House Initiative On HBCUs

Kentucky State University President Mary Evans Sias was among a select group of historically black college and university presidents and other guests who were invited to the White House on Feb. 26 to witness President Barack Obama sign the executive order to renew the White House Initiative on Historically Black Colleges and Universities.



The purpose of the initiative is to strengthen and expand the capacity of historically black colleges and universities in order to enhance their ability to

provide a quality education. President Jimmy Carter established the federal program in 1980.

“It was clear that the president understood that HBCUs like KSU need and deserve the funding often denied them in the past to help them fulfill their missions,” Sias says. “By renewing the executive order for HBCUs President Obama reminded us that HBCUs are an essential component of higher education if this country is going to successfully educate all of its students.”

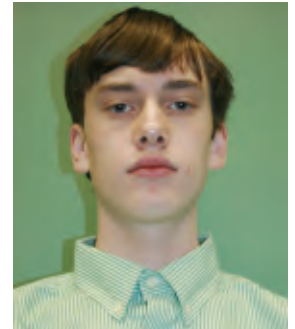
The Obama administration has committed to a 5 percent increase for the Strengthening HBCUs program and support for the \$85 million in mandatory funding for HBCUs in the pending Student Aid and Fiscal Responsibility Act. The administration also supports the HBCU Capital Financing program, the Strengthening Historically Black Graduate Institutions program, a comprehensive science and technology workforce program at the National Science Foundation and the increase of the Pell Grant maximum award to \$5,710 in 2011.

Thorobred News Staff Wins Four Awards

The Thorobred News staff won four awards in late February at the Kentucky Intercollegiate Press Association conference held at Transylvania University. The student awardees are junior Anastasia Hill, first place for advertising design; junior Meghan Smith, first place for best sports feature; and senior Terri McCray, honorable mention for best commentary. The staff also won second place for best editorial.

KSU Junior Advances To Next Round Of College Jeopardy, Translates Chinese For Speaker

Kentucky State University junior James Lawson Whites has an amazing mind. He was the buzzer to beat at the Honda Campus All-Star Challenge competitions, and is the man to see when you want to translate a 15-page brochure from Mandarin Chinese to English.



James Lawson Whites

The trivia whiz will fly to Chicago, Ill., in May to participate in the second round of auditions for College Jeopardy. He first had to quickly answer a series of questions online to qualify for the second round. Now, he will have an in-person audition and take a 50-question written test. While in Chicago, Whites and the other qualified applicants will play rounds of Jeopardy and submit to a brief interview, all to gauge which contestants would be the best for the show.

He also recently welcomed a group of Chinese mine owners on behalf of the Commonwealth of Kentucky at a ribbon-cutting ceremony at MineShield LLC's new manufacturing facility in Lancaster. Whites offers various translation services – written and spoken – for Kentucky Speaker of the House Greg Stumbo.

SIRAS Examines African Issues

Dr. Reginald S. Avery, president of Coppin State University, (right) speaks with Anthony Todd Quire '05 (left) after giving the opening



address at the recent 11th annual Southern Interdisciplinary Roundtable on African Studies on KSU's campus. Dr. Egbunam Amadife, director of SIRAS, pictured in the center, was made a Kentucky Colonel at the opening plenary session for his SIRAS efforts. The conference allows students and scholars from around the nation and world to discuss the historical, social, political, artistic and economic trends facing Africa, African Americans and all descendants of Africa and how they can be used to promote better relationships.



We aspire to be the best public regional university in the South.

April 2010



Left to right: Merchant, Andrews, O'Cull

Merchant elected BOR chair

Cincinnati attorney John C. Merchant was elected as the first African-American chair of the Morehead State University Board of Regents.

"John is an outstanding choice and we look forward to his leadership of our governing board," said MSU President Wayne D. Andrews. "He is a proud alumnus of the institution and has gained valuable insight during his seven years of service as a Regent."

Merchant has been vice chair for the past year and was reappointed last year to his second six-year term on the board.

"I appreciate the opportunity that the members of the Board have given me," said Merchant. "I graduated from MSU in 1979 and to come back and be in this position is very gratifying. I know it is going to be a very tough job given the budget the Commonwealth is facing."

A native of Lexington, Merchant is a partner in the Cincinnati law firm of Peck, Shaffer, and Williams. He is a graduate of Morehead State University and the University of Kentucky College of Law.

Prior to joining the Cincinnati firm, Merchant served in several positions in the executive branch of state government. He is a past president of the MSU Alumni Association.

He is a board member of the New Cities Foundation of the Kentucky League of Cities and a trustee of the Ohio State Bar Foundation. He maintains memberships in numerous other professional organizations, including the National Association of Bond Lawyers, Black Lawyers Association of Cincinnati, Conference of Minority Transportation Officials, and the National Association of Securities Professionals.

Dr. John O'Cull of Vanceburg was elected vice chair. A Morehead State graduate, he was appointed to the Board of Regents in 2004.

Dr. Wistuba wins SAAS award

Dr. Troy Wistuba, associate professor in the Department of Agricultural Sciences, was awarded the Outstanding Young Animal Scientist-Education Award at the annual meeting of the Southern Association of Agricultural Scientist.

The award was presented to Dr. Wistuba by the Southern Section of the American Society of Animal Science in recognition of the quality and quantity of educational programs that he offers in both academic and applied settings. He is the first person to win this award that has served their career at a regional institution. The conference was held in Orlando, Fla.

Cheerleaders capture seventh national title

Morehead State University's all-girl cheerleading squad captured a national championship Saturday (Jan. 16) at the College National Cheerleading Championships.

The Universal Cheerleaders Association-sponsored event was held at the Walt Disney's Wide World of Sports in Orlando, Fla.

After finishing second for two straight years, the all-girl squad won its seventh national title.

Memphis was second, followed by South Florida, Indiana and San Diego State. Minnesota was sixth while rounding out the top 10 were Mississippi State, Western Kentucky, Florida State and Rutgers.

The all-girl cheerleading squads placed first in the country in its division in the qualifying round, which consisted of a cheer video and a one-and-a-half-minute video that demonstrated the teams' stunts, pyramids, basket tosses and tumbling skills.

Dr. Phillips named ACE Fellow



MSU's Dr. Clarendia Phillips, chair of the Department of Sociology, Social Work and Criminology, has been named an ACE Fellow for academic year 2010-11.

The announcement was made by Molly Corbett Broad, president of the American Council on Education (ACE).

Dr. Phillips earned Ph.D. and M.A. degrees in sociology from the University of Illinois at Urbana-Champaign, and a B.A. degree in sociology from DePauw University. Dr. Phillips worked as a senior

research associate with Policy Studies Associates Inc. in Washington, D.C. before starting her career at MSU in 2000.

The ACE Fellows Program, established in 1965, is designed to strengthen institutions and leadership in American higher education by identifying and preparing promising senior faculty and administrators for responsible positions in college and university administration. Forty-six Fellows, nominated by the presidents or chancellors of their institutions, were selected this year following a rigorous application process.

In addition to faculty responsibilities, Dr. Phillips has served as assistant provost, heading major campus initiatives and projects including those related to diversity. She also was awarded a prestigious National Institute of Mental Health (NIMH) postdoctoral fellowship for the 2003-04 academic year to conduct research with the University of Kentucky College of Medicine's Department of Behavioral Science.

A member of the first class of the MSU President's Leadership Academy, she is a former director of the MSU Interdisciplinary Women's Studies Program and also a principal investigator and project director for the Governor's Minority College Preparation Program.

Kentucky spacecraft Frontier 1 in space

Frontier 1 the spacecraft of Kentucky Space, was successfully launched and inserted into space reaching an altitude of approximately 270 kilometers. The spacecraft, which weighs about four pounds, was launched at the NASA Wallops Flight Facility in Virginia on a Terrier-Improved Malamute NASA rocket.

The mission represents the first time that Kentucky has ever developed, built and successfully inserted a free-flying spacecraft into space.

"The entire mission was text-book perfect. This achievement is a tribute to the hard work and perseverance of the Morehead and UK students. When we initiated the Kentucky Space program 4 years ago, none of us truly realized how challenging it would be to design, build, integrate and operate small spacecraft in the harsh environment of space," said Dr. Ben Malphrus, chair of the Department of Earth and Space Sciences and director of the Space Science Center. "With the success of Frontier I Kentucky has joined an elite group of space-faring enterprises. This is an historic day-- representing Kentucky's first venture into space. We now have tremendous momentum to continue to extend Kentucky's presence in space."

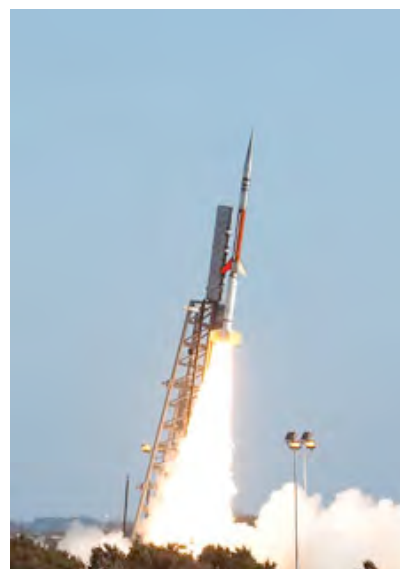
At T+72 seconds after launch, Frontier 1 was successfully ejected from the NASA launch vehicle into space. After fulfilling its mission objectives Frontier 1 began the normal decay of its trajectory, burning-up as it reentered the Earth's atmosphere. The spacecraft was designed and built in Kentucky by KS to test hardware and software subsystems that will be flown on an orbital satellite called KentuckySat 1 (KySat 1) scheduled to be launched with the NASA Glory Mission in November.

A team of Kentucky Space students and faculty mission advisors were on-site for the spacecraft integration, countdown process and launch. The students also managed ground stations at Wallops and were supported by other stations at Morehead State University, the University of Kentucky and the U.S. Naval Academy in Annapolis. The launch was broadcast live on NASA TV.

Kentucky Space has also recently formed a joint venture with NanoRacks LLC, a Houston-based aerospace company, to facilitate and undertake scientific research and related activities on the International Space Station (ISS).

Kentucky Space is a nonprofit enterprise involved in designing and developing educational, R&D and entrepreneurial space platforms. It is a consortium involving students and the combined resources and capacity of Morehead State University, University of Kentucky, University of Louisville, Western Kentucky University, Murray State University, the Kentucky Community and Technical College System, the Kentucky Space Grant Consortium, and Belcan, with support from the Kentucky Council on Postsecondary Education.

The managing partner and founder of Kentucky Space is the Kentucky Science and Technology Corporation.



IET grads have 100% pass rate

MSU's 2009 spring graduates of the Department of Industrial and Engineering Technology achieved a 100 percent pass rate on the Certified Technology Manager (CTM) exam.

This exam, administered through the Association of Technology, Management, and Applied Engineering (ATMAE), is a requirement of all expected graduates, although passing the test is not required. The IET department has been accredited by ATMAE since 1998, with reaccreditation achieved through 2014.

Kulick makes history, becomes first woman to win a PBA Tour title

Move over Billie Jean King. Former Morehead State University bowler Kelly Kulick of Union, N.J., became the first woman ever to win a major title on the Professional Bowlers Association (PBA) Tour Sunday as she captured the 2010 Tournament of Champions at Red Rock Lanes in Las Vegas.

"History has been made in the world of sports," Kulick said as she prepared to throw her last ball of the game.

Pedersen is national finalist in MTNA competition

Sophomore Elena Pedersen competed as a National Finalist in the MTNA Woodwind Young Artists Competition.

The Sanford, Fla., native is the soprano saxophonist in the Phoenix quartet and has been invited to perform at the 2010 Society of Composers (SCI) National Convention.



Former Eagle football player, Brian Shimer coached the USA bobsledding team to a gold medal during the Winter Olympic. It's the first time in 62 years that the U.S. has won an Olympic gold medal in bobsled. Shimer was a bronze medalist in 2002.

MSU first in Kentucky to offer B.A. degree in Japanese language

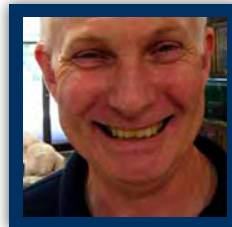
Course of study beneficial to those seeking to work in business environment

For the first time in Kentucky, undergraduate students can work toward an accredited bachelor of arts degree that is focused on the Japanese language. Programs of study for a Japanese major and minor have been established by MSU, effective immediately. With approximately 175 Japanese companies doing business in Kentucky, the next language of Kentucky business after English is Japanese. These programs at MSU will give a decided advantage to anyone seeking to work within the Kentucky business environment or anywhere else in the world.



Governor appoints university professor as State Geographer

Dr. George Kipphut has been appointed State Geographer by Kentucky Gov. Steve Beshear. Kipphut is the chair of the department of geosciences at MSU, which is housed in the college of science, engineering and technology. The title of State Geographer has traditionally gone to senior professors from larger schools, such as the University of Kentucky and the University of Louisville, but Kipphut said he believes this is an attempt to give attention to qualified professors at other universities around the state.



MSU receives Presidential Community Service award

Murray State University has been named to the 2009 President's Higher Education Community Service Honor Roll, the highest federal recognition a college or university can receive for its commitment to volunteering, service learning and civic engagement. The Corporation for National and Community Service, which administers the annual award, recognizes colleges and universities for their impact on issues from poverty and homelessness to environmental justice. Thousands of students joined faculty and staff to develop innovative programs and projects to meet local needs across the country.



College of science, engineering and technology announces new master's degree

MSU, with the support of regional industries, is announcing the availability of a new master's degree in chemical manufacturing management. The degree consists of a combination of graduate chemistry and industrial management courses offered jointly by Murray State's departments of chemistry and industrial and engineering technology. This program is the first of its kind to be offered in Kentucky. It blends science, technology and industrial management to enable graduates to better lead the industries in which they work. Several chemical corporations have offered their support for this new program, including Pella, Estron Chemical Inc., Honeywell, McCoy & McCoy Laboratories Inc., CC Metals and Alloys, LLC, ISP Chemicals Inc. and Lubrizol.

Weis receives national award

Dr. Roger Weis, professor and campus director of the American Humanics/Youth and Nonprofit Leadership program at Murray State University, is the recipient of a Distinguished Member Award from the National Society of Collegiate Scholars for his commitment to scholarship, leadership and service.

MSU alums Amy Watson and Jerry Walker win Emmy awards

Two alumni of Murray State University's department of journalism and mass communications won Emmy awards for their work at WTVF Channel 5 in Nashville, Tenn. Amy Bryan Watson, 1989 broadcast journalism graduate from Murray, and Jerry Walker, a 1995 electronic media graduate from Mayfield, received the awards at the 24th annual Mid-South Emmy awards banquet.



College of business is host to second annual Extreme Entrepreneurship Tour

The Murray State University college of business hosted an Extreme Entrepreneurship Tour (EET) for the second year on March 15, in the university's Curris Center Ballroom. "We started having an Entrepreneurial Conference at Murray State last year," said Steve Dublin, senior lecturer in the department of management, marketing and business administration. "Our goal is to raise awareness of entrepreneurial opportunities and to encourage students. The Extreme Entrepreneurship Tour is a high energy event. They have some of America's top young entrepreneurs as speakers, sharing their ups and downs and demonstrating that regardless of background, culture or income, anyone can launch a business and be successful. We want our students here at Murray State to pursue their dreams and contribute to a better society," Dublin continued.

Tina Collins is on the job as new MSU registrar

With Spring Break over and the home stretch for many soon-to-be graduates in sight, a trip to the registrar's office at Murray State University is almost inevitable. MSU's new registrar, Tina Collins, said the staff in the registrar's office is excellent and the biggest challenge for her right now is reviewing the student information system module and strategizing ways to enhance the system so that the registrar may better serve students, faculty and staff.

MSU announces provost appointment

Dr. Randy J. Dunn, president of Murray State University, announced the appointment of Dr. Bonnie Higginson as MSU's next provost on March 31. "I am pleased to recommend Bonnie to our board of regents for this position and feel that she has the best basis of experience and leadership acumen to continue the academic excellence for which we are known," said Dunn. "When I considered the overall package of what we needed, Bonnie has the background, work ethic, demeanor and extensive knowledge in several key areas that will be vital to furthering our academic enterprise and the university as a whole." Higginson holds the undergraduate and graduate degrees from Murray State University. She received her Ph.D. from the University of Georgia in 1985. Higginson then returned to MSU and served in various roles within the college of education including professor and chair. Additionally, she also served as faculty head of White College from 2000-07. Since 2007, Higginson has served as associate provost for academic affairs. She also has a strong background in the institutional accreditation process by the Southern Association of Colleges and Schools (SACS) and is an integral part of the university-wide Quality Enhancement Plan process. Additionally, she has been involved with the Council for Postsecondary Education on many levels during her tenure with MSU.

Dunn stresses ties between Owensboro and Murray

Dr. Randy Dunn, Murray State University president, visited Owensboro in February to share MSU's achievements with the Owensboro Rotary Club and to discuss the importance of Owensboro-Daviess County as a recruiting area for MSU. While in town, Dunn visited with students in both Daviess County and Apollo High schools. The visit to the Owensboro area afforded Dunn the opportunity to re-emphasize Murray State's strong standing in national rankings that reflect quality and affordability, such as the university's 19-year record as a top tier university in *U.S. News & World Report's* college ratings.





New General Education Program Speeds Up, Simplifies Process

Northern Kentucky University administrators recently announced a new general education program that ***lowers to 37 the number of general education credit hours required to graduate.***

The program, called “Foundation of Knowledge,” takes effect this fall. It is designed around a set of core competencies faculty have identified as critical for all graduates.

“The faculty have worked very deliberately to design a program that will ensure our students possess the knowledge, skills and competencies required for an educated workforce and/or graduate study,” said NKU Vice President for Academic Affairs and Provost Gail Wells.

New Certificate Programs Offer Help to Professionals Hit Hardest by Economy

NKU recently announced the launch of two new certificate programs that offer career opportunities for professionals hit hardest by these challenging economic times.

The NKU Certificate in Healthcare Technology and the NKU Certificate in Business Process Analysis are offered exclusively for individuals who are eligible dislocated workers under the Workforce Investment Act. The funds are provided through the 2009 American Recovery and Reinvestment Act.

The certificates are adapted from coursework in NKU’s fully-accredited undergraduate programs in Business Informatics and will be provided in an intensive 12-week integrated lecture and lab format in which students will experience hands-on exercises reinforcing practical computer skills.

“These certificates are designed to provide skills that will dramatically improve the employability of individuals,” said Dr. Ben Martz, chair of NKU’s business informatics program. “We are concentrating on the skills that employers tell us they want in their employees.”

The health informatics certificate focuses on computer skills for the healthcare industry, including technology and protocols. The business process analysis certificate focuses on information technology competencies that will help qualify individuals for positions requiring advanced software skills.

The program is built around five core competencies: critical thinking, perspectives, communication, science and technology, and personal responsibility and community.

The new program is designed to guide students to become independent learners, innovative thinkers, and responsible citizens. It provides the values, knowledge and skills that will empower students to discover their personal potential, communicate effectively, work in diverse communities and solve problems in a global society.

The transition will not change a student’s current major requirements, and the university emphasized that no student will be disadvantaged by the program change.

Chase Clinic Will Assist Kentucky Small Businesses and Nonprofits

NKU’s Chase College of Law has established a Small Business & Nonprofit Law Clinic which will give students the opportunity to gain valuable hands-on experience providing legal assistance to local small business entrepreneurs and nonprofit organizers who would otherwise be unable to obtain legal counsel. It is the first clinic of its type in Kentucky.

“This clinic will enhance our students’ professional development through experiential learning in the transactional areas of business and nonprofit law including intellectual property law,” said Dean Dennis Honabach. “The clinic will provide needed assistance to underserved Kentucky small businesses and nonprofit organizations.”

Under the supervision of the clinic director, students will assess the needs of clinic clients, provide legal counsel, draft organizational documents and contracts, and otherwise provide legal services for clients.

“The clinic will provide superb opportunities for our students to learn first-hand what it takes to be an attorney as they meet with clients, review and prepare documents, and handle legal issues,” said center director Sherry Porter. “The students will also develop an understanding of how a law firm works as they learn new client procedures, case file management, and effective client communication.”

In March, NKU hosted a free ***Start-Up Slam*** to help local entrepreneurs get their businesses off the ground. The event brought business veterans together with more than 80 aspiring entrepreneurs to share insights into marketing, revenue and expense forecasting, and pitching to investors. Attorneys were also on hand to assist with the formation and registration of new businesses. Sponsored by the Kentucky Science and Technology Corporation, it was the largest Start-Up Slam to date.



Campus Success

- UK will be one of fewer than 300 organizations worldwide to host a Confucius Institute, a nonprofit educational entity devoted to promoting exchange between China and other countries. The distinction was officially granted by the Office of Chinese Language Council International. The UK Confucius Institute will be distinct from many others in the country in that it will focus not only on language teaching, but also on the rich history of Chinese art and music. Each year, UK's partner institution, Shanghai University, will send at least two faculty members to Lexington to teach language classes and organize events promoting cultural exchange between China and the United States; in addition, Shanghai University will send visiting faculty to the UK College of Fine Arts to offer master classes or to participate in regular classes.

Student Success

- UK students brought in more than \$636,000 during the University's 5th annual dance marathon, topping last year's record-setting total. With this year's total, DanceBlue has contributed more than \$2 million to the Golden Matrix Fund and the UK Pediatric Oncology Clinic since its inception in 2006. **Funds raised from the event that the Clinic designates for research are, in turn, matched by the state through the Cancer Research Matching Fund Program, administered by the Council.** DanceBlue, Kentucky's largest student-run philanthropy, has quickly become a rite of spring semester on UK's campus, as UK's student leaders take to Memorial Coliseum for the 24-hour event. Students cannot sit or sleep during the marathon, a gesture that symbolizes their desire to stand alongside children suffering from childhood cancer.
- The 2009-2010 UK College of Law National Trial Team finished as one of the top eight teams in the nation at the American College of Trial Lawyers National Trial Competition in Dallas, Texas, March 27.
- Lesley Mann, a UK senior from Calhoun, Kentucky, was one of only 29 students in the nation to be named a Gates Cambridge Scholar. Lesley will use the scholarship to pursue her master's degree in Bioscience Enterprise at the University of Cambridge in England. This is the third national scholarship honor bestowed upon Lesley, who is a previous recipient of both the Beckman Fellowship and the Goldwater Scholarship.
- UK junior Jenna Shapiro, of Versailles, Kentucky, was one of 278 students named a Goldwater Scholar for 2010. Goldwater Scholarships cover expenses for tuition, fees, books, and room and board for students pursuing careers in mathematics and the natural sciences, as well as many engineering fields. Jenna is majoring in chemical engineering, while pursuing a minor in biology.

Research and Outreach Success

- UK's 2,730 College of Medicine alumni that currently practice across the Commonwealth generate \$6.3 billion annually for Kentucky's economy and create at least 49,140 jobs, according to UK's Office of Health Research and Development. Reaching far and wide, College of Medicine alumni are currently practicing -- and impacting communities -- in 88 percent of Kentucky's counties.
- The U.S. Department of Health and Human Services (HHS) announced that UK will receive more than \$6 million in federal funding to assist Kentucky physicians with maximizing the use of electronic health records in their practice. This funding will enable UK to establish the first Kentucky-based Health Information Technology Regional Extension Center (REC) solely focused on serving Kentucky health care practitioners.



We're charting our course...

The Postsecondary Education Reform Act of 1997 has been transformational at the University of Louisville. In fact, it is the most important public policy initiative in the history of the institution. Our specific mandate at UofL was to become a "premier nationally recognized metropolitan research university." Today, we ask legislators to remember that despite the difficult economic times and the unprecedented challenges you face—we must all keep higher education reform alive. Follow our compass to see how we're staying on course to meet our mandate:

...to move Kentucky in the right direction.

EDUCATION

- We know that if the very best students in Kentucky feel they must leave Kentucky to get a quality education, the likelihood they will ever come back and be part of our communities and workforce is greatly diminished.
- We are producing 40 percent more graduates today than in 1998.
- Six-year graduation rates have increased by 15.4 percent since 1998.
- With 24 national merit scholars this year, UofL is attracting students who excel above the state and national averages.

WORKFORCE

- With more than 130,000 graduates living and working in Kentucky, UofL is developing a populace of great leaders who will advance the state.
- A recent economic study shows that between 2003 and 2009 UofL has increased the economic output of the state by \$1.2 billion and produced an estimated 9,600 additional jobs. These jobs accounted for over 40 percent of the total new jobs created in the state economy.

RESEARCH

- Research is economic development.
- Our research funding is up 233 percent, a \$98 million increase. The money we bring into the state transfers directly into jobs and economic activity, but more than that, our research is making a difference in the lives of people.
- Our research is translational research—from bench to bedside.
- At the UofL we have the first and only nationally accredited breast-care program in the state.

HEALTHCARE

- UofL's downtown Louisville health sciences center has earned recognition in many areas including the state's first certified stroke center and the area's only adult trauma service.
- Research collaborations between UofL's Brown Cancer Center and the Owensboro Medical Health System (OMHS) develop cancer-fighting drugs and vaccines derived from tobacco and other plant sources.
- A School of Nursing and OMHS partnership in a baccalaureate nursing program will graduate up to 40 students each year.
- Dental outreach programs provide more than \$1 million in clinical care to the underserved each year.

A Message from Dr. Ramsey

Dear Kentucky Policymaker,

Despite significant economic challenges, we at the University of Louisville continue to chart a course to meet the needs of Kentucky. We are developing leaders, discovering new medical breakthroughs and serving as an economic engine for the state.

Our university is moving ahead and staying true to its mission despite these financial challenges. We continue to increase graduation rates while attracting the best students who excel above the state and national averages. We



have become a hub for groundbreaking research and discoveries. And our more than 130,000 graduates living and working in the state are providing expertise and leadership across Kentucky.

But continued budget cuts jeopardize our mission. And it is our students and researchers who will feel the real consequences, from unavoidable tuition hikes to delayed or discontinued research programs. These are the same students who have brought the university unprecedented academic milestones like Kentucky's only Rhodes Scholarship in 2009 and more than 20 Fulbright Scholarships over the past three years. These are the same researchers whose work improves health care and quality of life of all Kentuckians while attracting millions in federal research dollars to the state each year. Economists estimate that each of those dollars generate \$2.20 for the local and state economies.

These are difficult economic times and the university wants to do its part. We constantly look for and find new ways to save money and increase efficiency. We continue to be accountable, promote transparency and be good stewards of the public dollars entrusted to us.

We know you will do everything possible to help us continue to meet our legislative mandate—to become a premier metropolitan research university.

Sincerely,



This publication is printed on 100% post-consumer waste recycled paper. It was produced by the University of Louisville and printed using non-state funds.



UNIVERSITY OF
LOUISVILLE
It's Happening Here.

The University of Louisville is an equal opportunity institution.

UofL Across Kentucky

Sharing our medical expertise throughout the state

Smile Kentucky!

A nationally honored community partnership, Smile Kentucky! addresses the most common unmet health need in children—tooth decay. Through the program, the UofL School of Dentistry donates the use of its students, faculty, staff, supplies and facilities. Since



2003 it has provided treatment to more than 1,700 children, free dental screenings to more than 29,000 children and education programs to 90,000 children throughout the state.

UofL Stroke Team

With a telemedicine network, the UofL Stroke Team is a statewide resource. It has 11 robots in 11 hospitals, offering 24/7 access to additional expertise in Louisville. With a secure video connection, the UofL stroke specialist can beam in to assist in evaluations and provide real time consultations.



UofL Pediatrics

In a state where 57 of 120 counties have no pediatricians, UofL Pediatrics has undertaken an array of efforts to ensure children across Kentucky have access to pediatric care. The program operates 26 satellite specialty clinics throughout Kentucky and southern Indiana and more than a dozen tele-echo sites. In 2008 they covered 4,800 satellite clinic visits.



Trover Clinic

The Trover Clinic is an off-campus UofL medical teaching center located in Madisonville, Ky., that includes a 401-bed hospital and 120 physicians. An increasing number of UofL medical students are receiving training at the clinic and its related satellites. The clinic demonstrates to students and residents the excellent care that can be given in a small to medium size community. Graduates of UofL's Trover Clinic programs are choosing overwhelmingly to locate their post-graduate practice in rural or underserved communities.



Tapping the Power of Datasream

Partnership powers computers against cancer



School computers are a vital part of teaching and learning in today's educational system, but when Kentucky students aren't in class learning programming, calculating a math problem or writing an essay, their computers sit idle. According to one estimate, school computers in the state are dormant up to 80 percent of the time—but that is changing.

The Kentucky Datasream Initiative—an innovative partnership between the private not for profit Louisville technology company Datasream, the University of Louisville and several Kentucky school systems—is tapping into that resource to help UofL scientists search for new cancer therapies. Instead of powering down, many school computers are working at their full potential all day and night—making millions of calculations needed by researchers.

This "grid computing" network allows researchers at UofL's James Graham Brown Cancer Center, such as John Trent, to tap into thousands of school machines statewide.

Through the power of the Datasream program—Dr. Trent and his collaborators are discovering new cancer treatments. The results?

- More than 20 confirmed discoveries.
- 3 drugs licensed for clinical development.
- Accelerated search for more effective cancer treatments.
- Saved millions in state dollars by potentially speeding up drug discovery from concept to licensing from 20 years to 18 months.



UofL gets prestigious distinction in breast care

The University of Louisville's James Graham Brown Cancer Center is the first and only center in Kentucky to be granted a full three-year accreditation by the National Accreditation Program for Breast Centers (NAPBC), a program administered by the American College of Surgeons.

Accreditation by the NAPBC is given only to those centers that have voluntarily committed to provide the highest level of quality breast care and that undergo a rigorous evaluation process and review of their performance.

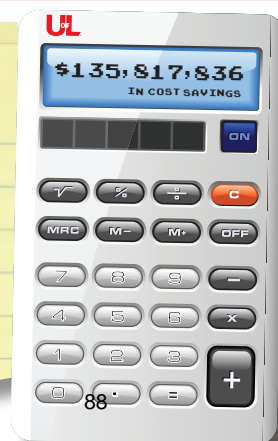
Kentucky First Lady Jane Beshear took part in an announcement of the honor on Jan. 20, at the James Graham Brown Cancer Center's Breast Care Center.

"This is terrific news for the women of Kentucky," Beshear says. "To have a breast care center in our state recognized as one of the top in the country no doubt provides a great deal of comfort and confidence in the minds of our people."

UofL Savings Calculator

To mitigate the impact of 9 budget cuts in 9 years, the university has recouped more than \$135 million in cost savings and avoidances over that same time period. Here are 7 ways we will continue to be good stewards of the dollars entrusted to us:

- 1 Continue finding new ways to save money and increase efficiency
- 2 Aggressively improve balance sheet management
- 3 Increase clinical income to support education and research
- 4 Increase sponsored research and commercialization income
- 5 Create private sector partnerships
- 6 Enhance private sector support through enhanced fundraising
- 7 Use innovative revenue generating strategies like tax increment financing



Finding Meaning in Our Mandate

In 1997 the Kentucky General Assembly gave higher education institutions a mandate—a public agenda to increase economic opportunity and the quality of life for the people of our state. At the University of Louisville, our specific mandate was to become a “premier metropolitan research university.” What does our mandate mean? Let's take it word for word.



PREMIER

Premier means first—from opening the first emergency room to the world's first self-contained artificial heart transplant, UofL has shown throughout the years that it's a premier institution.

- 1st Breast Care Center in Kentucky to be nationally certified.
- Top 15 percent in “military friendly” schools.

- 16th ranked graduate entrepreneurship program in the nation.
- 20th among public institutions in the number of Fulbright Scholars.
- 20th in entrepreneurship productivity.
- No. 1 ranked choral group in the world—the Cardinal Singers.
- 11th in School of Dentistry research.
- And much more ...



METROPOLITAN

In Louisville, we like to say, “It's possible here”—a place where blue-sky thinking meets grass roots can-do.

- The higher ed reform legislation understood that **every great city has a great university**.
- Some 9,600 additional jobs were created as a result of the university—accounting for more than 40 percent of new jobs in the state economy.

- UofL ranked 12th in the “Saviors of Our Cities: A Survey of Best College and University Civic Partnerships.”
- Louisville's major businesses and corporations offer students a chance to benefit from hands-on learning.
- UofL student artists, actors and musicians both add to and draw from Louisville's vibrant cultural and artistic community.



RESEARCH

Our research is translational—from bench to bedside. We are making remarkable breakthroughs in:

- Adult Stem Cell Research
- Stroke Research
- Breast Cancer Research
- Renewable Energy

- Our research funding is up 233 percent since 1997—\$42 million in 1998, \$140 million in 2009. That's a \$98 million increase.
- The **money we bring into the state transfers directly into jobs** and economic activity, but more than that, our research is making a difference in the lives of people.



UNIVERSITY

We are attracting the very best students and **beating the state and national averages in ACT scores**. Our current freshman class came to UofL with an average ACT score of 24.5.

- The freshman class included 24 National Merit Scholars.
- We are producing 40 percent more graduates than at the beginning of the

reform—1,734 in 1998, 2,428 in 2009.

- Our six-year graduation rates have increased by 15.4% since 1998.
- We have **more students from outside Louisville than inside**. Monica Marks from Rush, Ky., is the only student from Kentucky to receive the Rhodes Scholarship this year and the first female from UofL.



“It is our job to ensure that those who come after us will look back and say that we were true to the course, true to our cause, true to the mission that our center of advanced learning has created an even greater community of some consequence.”

—Dr. James R. Ramsey, President



“Our metropolitan mission is more than an accident of place. Our commitment to the community is a deliberate assumption of the mantle of leadership, working in partnership with others, to bring all the resources of a world-class university to bear on solving the most significant problems of our day.”

—Dr. Shirley Willihnganz, Provost

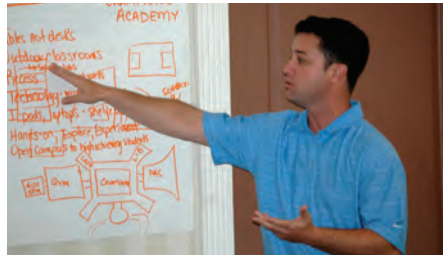
Kentucky Principals' Academy

Inspiring educators to engage, learn and lead

Now in its third year, the Kentucky Principals' Academy (KPA) at the University of Louisville continues to grow and evolve into a comprehensive professional development experience for Kentucky's principals, providing them a world-class opportunity that leads to improved student learning.

The academy, which is unique to Kentucky, is supported through a grant provided by the Council on Postsecondary Education and funded by the Kentucky General Assembly.

Organizers and instructors at the academy include successful principals, superintendents, university professors and regional and national consultants. The curriculum is based on the needs of the practitioners and influenced by the basic beliefs of the academy—that education must be learner-centered, leadership development must reinforce beliefs and practices, and leaders must inspire others to learn and lead.



John Leeper, principal of Carroll County High School, shares some findings during the Summer 2009 KPA.

Participants in KPA are selected through an application and interview process conducted by a statewide advisory committee. The principals attending the academy create a network of support for themselves and their staff at their respective schools and incorporate the techniques learned at the academy. The result is a more holistic approach in time management and leadership. They learn how to improve and balance leadership responsibilities by using more efficient means of dissemination of information and establish a leadership team within their schools.

School energy program gets \$9 million boost



The Green Team at Shepherdsville's Roby Elementary School huddles up before the press conference.

A partnership including the University of Louisville's Kentucky Pollution Prevention Center will receive federal stimulus money totaling more than \$9 million to expand a school energy improvement program, Gov. Steve Beshear announced last month.

UofL President James Ramsey and KPPC Director Cam Metcalf joined Beshear in

announcing the partnership in a news conference at Shepherdsville's Roby Elementary School. Besides KPPC, the partners are the state Department for Energy Development and Independence and the Kentucky School Boards Association.

"We're proud that, in these tough economic times, we can help Kentucky schools save money on their energy bills," Ramsey says.

The money from the American Recovery and Reinvestment Act through the U.S. Department of Energy will extend the Kentucky Energy Efficiency Program for Schools (KEEPS) by helping all 174 Kentucky school districts enroll. A 2008 state bill required all public school boards to enroll in KEEPS, which KPPC administers.

Signature Partnership Changes Lives

The Signature Partnership is the University of Louisville's comprehensive effort to enhance the quality of life and economic opportunity for residents of West Louisville. The goal is to work with various community partners to improve the educational, health, economic and social status of individuals and families who live in Louisville's urban core.



Participants at a recent Student Outreach Uniting Louisville (SOUL) event—part of UofL's Signature Partnership.

Working closely with community partners and residents, the university has coordinated and enhanced existing programs and launched new programs designed to eliminate or reduce disparities that West Louisville residents experience in education, health, economic and social conditions.

The university is drawing upon the expertise of faculty, staff and students from every school and college of UofL to deal with the quality of life issues affecting our community.

Program Goals and Objectives

Education

- Raise reading, math and science skills to grade level
- Raise percentage of residents with a high school diploma to that of the community average
- Raise percentage of residents with a bachelor's degree to that of the community average

Economic Development

- Raise employment level of residents in target areas
- Raise per capita income of households in target areas
- Increase business creation and expansion in target areas
- Increase business entrepreneurship by residents in target areas

Social and Human Services

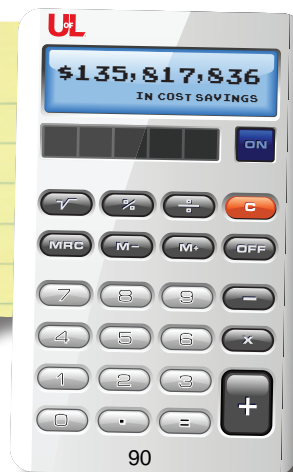
- Reduce substance abuse
- Reduce youth violence
- Provide safe, quality environments for dependent individuals, including the elderly and disabled

Health

- Reduce infant mortality
- Increase life expectancy
- Reduce chronic illnesses like cancer, cardiovascular disease and mental health through early identification and treatment

UofL Savings Calculator

- Automated security configuration checks. **\$70,000, recurring**
- Refinanced long-term debt within the University of Louisville Foundation. During this time period UofL refinanced the Kurz Hall Bonds and the Bettie Johnson Hall Bonds through the Student Housing Revenue Refunding Bonds, Series 2009A and 2010A for a reduction in overall cost. **More than \$2.3 million, one time**



Making Louisville a Nucleus for Economic Development

The prospect of a partnership with the University of Louisville was a major factor in the decision of a long-term care company to relocate its headquarters to Louisville. **Signature HealthCARE** announced last month that it is moving to Louisville from its current home in West Palm Beach, Fla., in part, because of the opportunity to set up an International Center for Long-Term Care Innovation (LTC Innovation) in conjunction with UofL's Nucleus project. Signature expects to employ about 120 people at its Louisville headquarters. The company operates senior living facilities, including three in Louisville and 17 in Kentucky.

THE FOREFRONT



UofL President James Ramsey

"We have several tremendous faculty and researchers that are at the forefront in senior-focused health care, gerontology, geriatric medicine and aging. As the state's life science and innovation center, Nucleus has everything it needs to establish a center that will be a core component of this effort."

INNOVATION & COMPASSION



Louisville Mayor Jerry Abramson

"The leaders at Signature HealthCARE are running what is one of the most innovative and compassionate senior care companies in America. The fact that they've chosen Louisville for their headquarters adds yet another company to the city's growing senior care industry."

AMAZING TALENT POOL



E. Joseph Steier III, president & CEO of Signature HealthCARE

"Signature spent several months strategizing and researching possible locations throughout Florida, Tennessee and Kentucky. Louisville will provide a great central location with one of the best quality of life environments for families, rich university partnerships and an amazing talent pool to foster aggressive growth."

QUALITY OF LIFE



Kentucky Gov. Steve Beshear

"Kentucky is proud to once again attract an industry-leading headquarters operation, creating more than 120 new high-paying, quality jobs. The location of Signature HealthCARE's national headquarters helps to solidify Louisville as a leader in the aging care industry and is a testament to the business climate and quality of life Kentucky offers."

SIGNATURE THINK TANK

Signature HealthCARE also is planning to start a think tank at its corporate headquarters, which will be located in the Blankenbaker Crossings development in eastern Louisville. The think tank intends to use faculty from UofL's Kent School of Social Work, Speed School of Engineering, College of Business and others to produce white papers and best practices on dealing with geriatric and aging adults.

ABOUT NUCLEUS

UofL's Nucleus Life Science and Innovation Center will house multiple facilities in close proximity to expedite collaboration and shared expertise among researchers and companies.

Photo above: Nucleus, the 30-block health and life sciences center planned for downtown Louisville, includes a research park focused on commercializing discoveries developed there.

A Message from Dr. Ramsey

Dear Kentucky Policymaker,

At the University of Louisville, we think of ourselves as an economic driver for Louisville and the entire Commonwealth. Last month long-term care company Signature HealthCARE announced the relocation of its headquarters to Louisville. News like this is further proof that UofL is creating jobs and growing the intellectual capital that will encourage great companies to come to Kentucky.



UofL is committed to supporting innovative, entrepreneurial companies to take their work from the "bench to the bedside." These outstanding discoveries have an impact on the everyday lives of Kentuckians and people around the world. We are confident the same will happen as part of this multi-faceted partnership with Signature.

UofL has a mandate to become a premier, nationally recognized research university. As a key part of that mandate we launched Nucleus, which works with UofL to create a seamless commercialization process for our research that yields viable companies. Like the partnership with Signature HealthCARE, and the many companies that will follow, the University of Louisville will bring the expertise of its research labs and classrooms together to act as a catalyst for economic development.

Sincerely,





UofL votes | New series included mayoral and senate forums

From left: Senate candidates Daniel Mongiardo, Darlene Price, James Buckmaster, Jack Conway and Maurice Sweeney.

University of Louisville faculty, staff and students got their first glance at the Democratic candidates for U.S. Senate (shown above), who answered tough questions during an on-campus evening debate on April 1. Two days before, they had the same chance during a forum featuring 11 Louisville mayoral candidates.

UofL sponsored the events in conjunction with the UofL College Democrats, College Republicans and Pi Sigma Alpha as part of their Cards Decide 2010 week and the new UofL Votes series of forums and debates. Each forum was open to faculty, staff, students and the general public.

During the forum for the U.S. Senate race the five Democrats who are running to replace Sen. Jim Bunning answered questions about gay rights, federal bailouts, the recently passed health care reform law, offshore drilling and other topics during a 90-minute debate in Bigelow Hall.

Darlene Price, Jack Conway, Daniel Mongiardo, James Buckmaster and Maurice Sweeney shared many of the same views but offered stark contrasts on some issues.

UofL Director of Media Relations Mark Hebert served as the moderator and asked questions

submitted by audience members. Other questions were asked by Elizabeth Donatelli of WAVE-TV and Andy Alcock of WLKY-TV.

During the mayoral race forum in a packed Chao Auditorium, candidates explained how they planned to improve the area economy and do more to sustain the environment. The candidates for mayor answered questions from the audience during the 90-minute forum.

Hebert said the university hopes to sponsor more political forums or debates before the November elections.

UofL's Research Building **Tops Louisville's 'Structures'**

UofL's new **Clinical and Translational Research Building** in downtown Louisville was featured in the *Business First* special section "Structures" on April 2. The article outlines how the LEED Gold Certified, state-of-the-art facility is designed to encourage collaboration and discovery.



IT'S HAPPENING HERO | Alyson Myatt



The nanny who risked her life to save a 5-year old boy from a burning home was treated by the University of Louisville Hospital Burn Unit. Alyson Myatt (above), who garnered national attention on the *Today Show*, *The Ellen DeGeneres Show* and several other media outlets after her heroic actions, suffered second- and third-degree burns on her feet and hands. But Aden, the boy Myatt was watching, escaped unharmed.

Last structural beam in place for **downtown arena**



Former UofL basketball great Junior Bridgeman signs a ceremonial beam that was hoisted at the arena on March 29.

Construction workers, city leaders, the Louisville Arena Authority and University of Louisville officials celebrated the addition of the final structural beam to the new downtown arena on March 29.

Since construction is ahead of schedule and the final beam already had been placed, they signed a ceremonial beam that was hoisted with a flag and small tree to symbolize respect for nature.

The 22,000-seat arena is scheduled to open in November. It will be home to the UofL men's and women's basketball teams.

Western Kentucky University news for the Council on Postsecondary Education, April 2010



Dr. Gordon Emslie and Dr. Gary Ransdell

Gordon Emslie to be Next Provost at WKU

Dr. A. Gordon Emslie will be the next Provost and Vice President for Academic Affairs at WKU beginning July 1. Dr. Emslie is currently the Associate Vice President for Research and Dean of the Graduate College at Oklahoma State University.

“I am pleased to welcome Dr. Emslie to WKU,” President Gary Ransdell said. “His record of scholarship is varied and profound. He is an active teacher and researcher.”

He cited Dr. Emslie’s degrees in astrophysics, mechanical engineering and French as a positive factor for leading academics at WKU. “His leadership experience, his personality and his wit will serve him well as our Chief Academic Officer,” Dr. Ransdell said. “He has a keen grasp of WKU’s vision and potential.”

Dr. Emslie has been Associate Vice President for Research and Dean of the Graduate College at OSU since 2004 and Regents Professor of Physics since 2008. He was at the University of Alabama in Huntsville from 1981 to 2004.

“My charge is to lead the division of Academic Affairs as WKU advances its national and international reputation for scholarship, while retaining its core educational mission to prepare students to be productive, engaged and socially responsible citizen-leaders of a global society,” Dr. Emslie said



Sen. McConnell in WKU's Advanced Manufacturing and Robotics Lab.

U.S. Sen. McConnell Helps Dedicate Robotics Lab

U.S. Sen. Mitch McConnell was on hand to dedicate WKU’s Advanced Manufacturing and Robotics Lab, the region’s premier lab offering cutting-edge education, research and workforce development opportunities in automation, robotics, simulation and animation.

The lab is in 3,500 square feet of space that has been renovated to house a state-of-the-art facility for advanced manufacturing, industrial automation, robotics and digital design graphics for animation and simulation. The departments of Architectural and Manufacturing Sciences, Computer Science and Engineering share the use of the facility in the Environmental Sciences and Technology Building.

Sen. McConnell has secured almost \$6 million in federal appropriations over the past three years for WKU’s Ogden College of Science and Engineering, of which nearly \$2 million has been used for the lab and equipment.

WKU Becomes First Kentucky Home of Confucius Institute

WKU is extending its international reach with the establishment of a Confucius Institute at the Bowling Green campus. President Ransdell traveled to China this January as part of efforts to further develop Chinese Studies at the university. While in China, he met with officials from China’s Office of Chinese Language Council International, or Hanban, to discuss the establishment of a [Confucius Institute](#) at WKU. An agreement was signed by Madam Xulin, the Director General of Hanban, and Dr. Ransdell to establish a non-profit educational partnership to become the first Confucius Institute in Kentucky. Hanban will contribute \$150,000 in startup funds, 3,000 volumes of books, videos, and other materials, and a multi-media exhibit, valued at up to 1,000,000 RMB (about \$150,000 U.S.).



New WKU-Owensboro Building Dedicated

WKU's Owensboro campus now has its own home. As part of a ribbon cutting and open house, U.S. Rep. Brett Guthrie and Daviess Judge-Executive Reid Haire joined WKU President Gary Ransdell and WKU-Owensboro director Gene Tice to celebrate the partnerships that have been essential to completing construction the first building on a 27-acre campus site.

"We're going to build a WKU-O that this community and our partner institutions can be proud of," Dr. Ransdell told about 300

people gathered for the event. WKU has partnered with Owensboro and Daviess County governments, Kentucky Wesleyan College, Brescia University and Owensboro Community and Technical College to improve the education and quality of life for the Owensboro region, Dr. Ransdell said. After Daviess County purchased the site, construction of the \$6 million building began in 2008.

The 30,000-square-foot building contains 16 classrooms (eight with interactive video capability), electronic library, computer lab, bookstore, conference room and a conference center that seats up to 60. With technology, parking lot, outdoor lighting and grounds beautification included, the total project is more than \$10 million. Congressman Guthrie secured \$500,000 in federal funding for technology and equipment in the new building. "It was obvious that a community so important to the Commonwealth should have this opportunity for its citizens," said Guthrie, who also presented a flag that had flown over the U.S. Capitol.



Joey Coe

WKU Student Named Udall Scholar for the Second Time

For the second consecutive year, WKU student Joey Coe has been named a Udall Scholar. Coe, a junior Honors College student and environmental studies major from St. Matthews, used his first \$5,000 award to help pay for his Semester at Sea experience. He then used that experience, along with a proven record of environmental and social activism, to submit a second successful application. Coe was one of 80 students from 63 colleges and universities selected by an independent review committee of the Udall Foundation. He is the only student from Kentucky and WKU is the only Kentucky institution to receive a Udall Scholarship in 2010.

iWKU App Brings WKU Information to Mobile Devices

WKU information is now available on mobile devices such as iPhones and BlackBerrys through the iWKU application. WKU has been working with Blackboard Inc. to develop the application, which is now available by searching WKU via computer through iTunes or via an iPhone through the App Store. The application is modeled after iStanford, which is generally accepted as a model iPhone app for university administrative purposes.

The application will include extensive information about WKU for mobile device users, including live interactive maps, campus directory, athletics information, news, events, course catalogs, image library and more.

Students Win Competition with Solar-Powered Robot

A solar-powered robot designed and built by WKU electrical engineering students won the Hardware Competition at the [IEEE Southeastcon 2010](#). WKU was among 44 colleges and universities from the southeastern United States and Jamaica that competed in the event hosted by [IEEE](#), the nation's largest electrical engineering professional organization. Teams had to create a robot that could traverse a set course of obstacles and terrain in three minutes with only "solar" energy for fuel. The robots had to be totally empty of energy at the start. In the final round, WKU's robot posted the best run to win the competition.



WKU's solar-powered robot.

For more WKU news, go to <http://www.wku.edu/news/index.html> or <http://wkunews.wordpress.com/>. Become a fan on Facebook at www.facebook.com/WKUNews.



News from the Association of Independent Kentucky Colleges and Universities April, 2010



Transylvania University President Charles L. Shearer (seated) with AIKCU presidents (L-R): Jim Taylor (Cumberlands), Sandra Gray (Asbury), Governor Paul Patton (Pikeville), Sr. Margaret Stallmeyer (Thomas More), Larry Shinn (Berea), Bill Crouch (Georgetown), Bill Huston (St. Catharine), and Ed de Rosset (Union)

AIKCU celebrates Transylvania President Charles Shearer's nearly three decades of involvement

AIKCU honored retiring Transylvania University president Charles L. Shearer at its April 12 celebration event. Shearer will retire at the end of the year after 27 years as Transylvania's president. Colmon Elridge, (Transy '03) Executive Asst. to Governor Steve Beshear, Transylvania staff member Susan Rayer, and Berea College president Larry Shinn all spoke of Dr. Shearer's ethics, strong leadership, and commitment to Transy and independent colleges in Kentucky. Dr. Shearer has been very active in the association throughout the years. He was one of the co-founders of AIKCU's collaborative Spotlight job fair and served as chair during a critical period in the organization's history.

Asbury College officially becomes Asbury University; Asbury students honored by General Assembly for work during Olympics

Asbury College marked its official transition to Asbury University on March 5, 2010. Then on March 16, Asbury Media Communications students, Professor Jim Owens, and President Sandra Gray were honored in the Kentucky House for the Asbury students' work broadcasting the Vancouver Olympics. Vancouver marked the 9th consecutive Olympics Asbury students have served in paid broadcast positions during the games.



AIKCU members announce new partnerships with KCTCS

AIKCU campuses' relationships with KCTCS continue to strengthen. AIKCU campuses already enroll large numbers of KCTCS transfer students, and those numbers only look to increase as members continue to seek partnerships with KCTCS.

Campbellsville University recently entered into a partnership with Elizabethtown Community and Technical College to allow students from ECTC to have a “smooth and seamless” transfer to CU to obtain degrees in four areas.

Berea College also recently announced a partnership with KCTCS designed to triple the number of transfer students it accepts each year.

Brescia University and **Kentucky Wesleyan College** have partnered with Owensboro Community and Technical College and Owensboro's RiverPark Center to create a unique, collaborative Bachelor of Theatre Arts degree. Students pursuing the degree will have the opportunity to participate in courses at each of the participating institutions no matter which one is their home.

Five AIKCU institutions named to 2009 President's Higher Education Community Service Honor Roll

Bellarmino University, Berea College, Centre College, Lindsey Wilson College, and the **University of the Cumberlands** were all recently named to the 2009 President's Higher Education Community Service Honor Roll. Established in 2006, the President's Higher Education Community Service Honor Roll annually recognizes colleges and universities for their commitment to and achievement in community service.

Mid-Continent University freezes tuition for traditional undergraduates

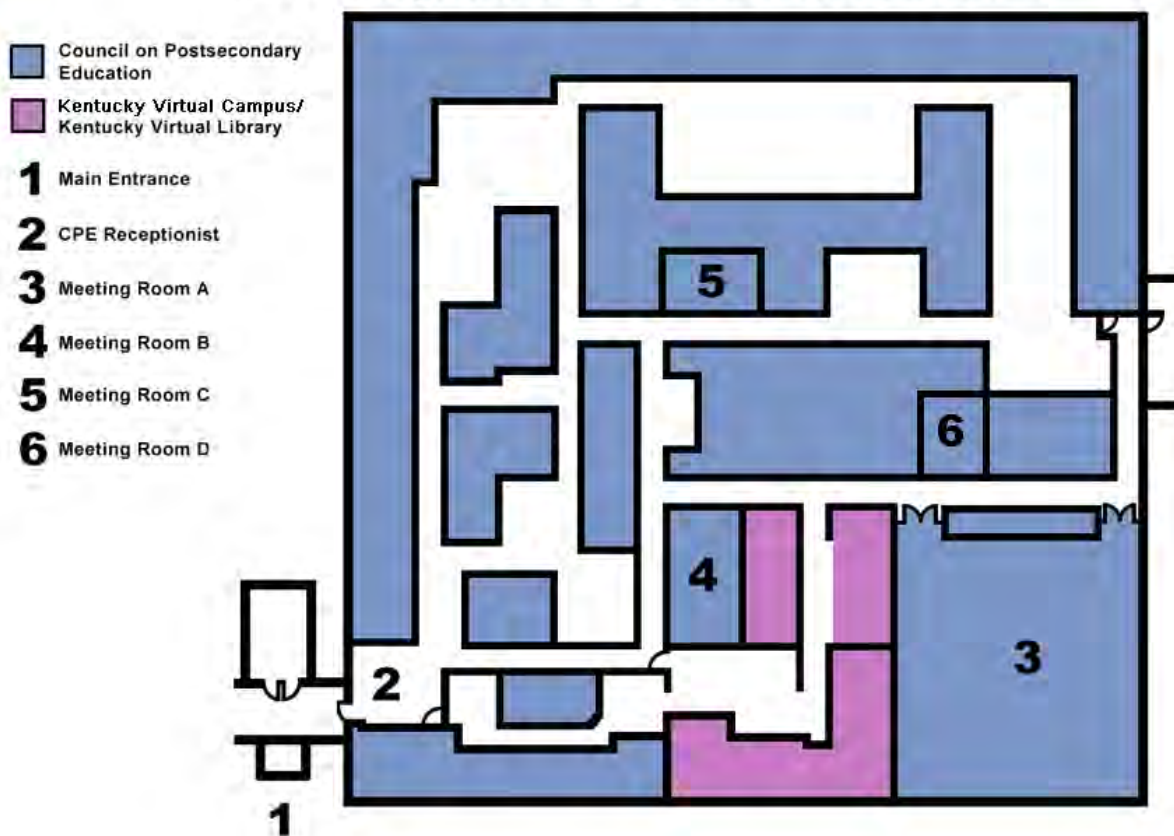
Mid-Continent University will not raise tuition or fees for traditional day-time, on campus students for the 2010-2011 academic year. This tuition freeze is designed to assist students who continually struggle to make ends meet.

Spotlight on Employment and Internships brings students and potential employers together

More than 50 recruiters met with 150 students in early March during the annual AIKCU Spotlight event in Lexington. This marked the 25th year of the collaborative Spotlight event, which provides juniors and seniors from AIKCU member colleges a chance to explore employment opportunities, internships, and graduate schools in a single location.

For directions to the CPE offices, visit <http://www.cpe.ky.gov/about/directions.htm>.

1024 Capital Center Drive, 3rd Floor



The Council on Postsecondary Education is Kentucky's statewide postsecondary and adult education coordinating agency charged with leading the reform efforts envisioned by state policy leaders in the *Kentucky Postsecondary Education Improvement Act of 1997*. The Council does not discriminate on the basis of race, color, national origin, sex, religion, age, or disability in employment or the provision of services, and provides, upon request, reasonable accommodation, including auxiliary aids and services necessary to afford individuals with disabilities an equal opportunity to participate in all programs and activities.

Kentucky Council on Postsecondary Education
1024 Capital Center Drive, Suite 320
Frankfort KY 40601
Ph: (502) 573-1555
Fax: (502) 573-1535
[Http://cpe.ky.gov](http://cpe.ky.gov)

THE FIVE QUESTIONS

1 Are more Kentuckians ready for postsecondary education?

2 Is Kentucky postsecondary education affordable for its citizens?

3 Do more Kentuckians have certificates and degrees?

4 Are college graduates prepared for life and work in Kentucky?

5 Are Kentucky's people, communities, and economy benefiting?

THE SIX GOALS OF HB 1

1 A seamless, integrated system of postsecondary education strategically planned and adequately funded to enhance economic development and quality of life.

2 A major comprehensive research institution ranked nationally in the top 20 public universities at the University of Kentucky.

3 A premier, nationally recognized metropolitan research university at the University of Louisville.

4 Regional universities, with at least one nationally recognized program of distinction or one nationally recognized applied research program, working cooperatively with other postsecondary institutions to assure statewide access to baccalaureate and master's degrees of a quality at or above the national average.

5 A comprehensive community and technical college system with a mission that assures, in conjunction with other postsecondary institutions, access throughout the Commonwealth to a two-year course of general studies designed for transfer to a baccalaureate program, the training necessary to develop a workforce with the skills to meet the needs of new and existing industries, and remedial and continuing education to improve the employability of citizens.

6 An efficient, responsive, and coordinated system of providers that delivers educational services to all adult citizens in quantities and of a quality that is comparable to the national average or above and significantly elevates the level of education of the adults of the Commonwealth.

