



## Eastern Kentucky University Highlights & Achievements

[www.eku.edu](http://www.eku.edu)

- EKU was ranked among “**America’s Best Colleges**” by **forbes.com**, the web site for the popular business magazine. Of the 569 public and private colleges and universities recognized, EKU claimed the 428<sup>th</sup> spot, good for third among Kentucky’s public universities. Because there are more than 4,000 college campuses nationwide, the ranking essentially places Eastern among the top 10 percent of colleges and universities.
- *U.S. News & World Report* has again ranked EKU among the **top Southern Master’s Universities in the 2009 edition of “America’s Best Colleges.”** Eleven states comprise the Southern region in the magazine’s rankings. Also, the University’s graduate **occupational therapy program** has been named one of “America’s Best” by *U.S. News & World Report*. The program ranked No. 24 in the country in the magazine’s “America’s Best Graduate Schools 2008” edition.
- EKU’s alliance with Siemens Building Technologies will result in even more energy cost savings than first anticipated. When the agreement was announced in April, the performance savings contract was announced at \$22 million. The University learned recently that the figure has grown to \$27 million, which would make it the **largest Siemens sustainability project in Kentucky and one of the largest in the nation.** This project is being funded without additional taxpayer dollars. Costs associated with the improvements will be financed by energy savings guaranteed by Siemens.
- EKU **exceeded its Capital Campaign goal of \$25 million more than 13 months earlier** than the target date of completion.
- A **new ride-sharing system** at EKU is helping students, staff and faculty reduce costs while preserving the environment. EKU Rides ([www.rides.eku.edu](http://www.rides.eku.edu)), a social carpooling system powered by Zimride Inc., enables members of the University community to safely and efficiently join existing rides or add rides of their own. This new feature at EKU has attracted national attention from *University Business* magazine and from AASCU.
- The **National Science Foundation has awarded a grant of \$378,616** to EKU to examine the potential impact of climate change on fires and the ecology of forests in northwestern Asia and compare that to recent research suggesting that climate change has altered fire regimes in the western U.S. The research project is directed by Dr. Neil Pederson in EKU’s Department of Biological Sciences.
- The **University’s Aviation Program** is returning to Madison County after operating the flight portion of the program out of the Montgomery County Airport the past several years. The new fixed-base operator at the Madison County Airport has agreed to purchase two new training aircraft for the University’s use. These planes are the same kind that the U.S. Air Force Academy uses in its flight-training program.
- Twenty-eight students are enrolled in the **new doctoral degree program in Educational Leadership and Policy Studies.**





Kentucky State University has enjoyed many very positive events and activities over the 2007-2008 Academic year that will have a ripple effect into 2009 and beyond. Some say that the first impression is the most important. If that is one's opinion, then the fact that KSU was named again by the Princeton Review's 2009 Best Colleges in the Southeast. Additionally, KSU, for the second straight year was named by U.S. News and World Report as one of the best baccalaureate universities in the South. It also ranked KSU as one of the top historically black colleges or universities in the nation. These recognitions were brought about through

the efforts of the faculty, staff, the Board of Regent, the President and most importantly, the students. These groups were the catalyst behind the positive things, some of which occurred at KSU during the past academic year.

Increased Grant Activity – Kentucky State University's grant receipts increase by 16 percent over the previous academic year (from \$7.5 million to \$8.7 million). These monies are spread across 67 projects

Federal Higher Education Act money –

- KSU was able to acquire an additional \$900,000 in capacity building money from the federal Title III program. The amount of the federal money received was based in part on the academic performance of KSU students.
- KSU was included in the recently passed reauthorization act of the Higher Education Act for new funding. This funding may be used for Masters level program development and expansion in the areas of science, math, and computer science.

Upward Bound Program – Back on the KSU Campus – The Upward Bound program serves a maximum of 50 participants. First generation and low income students must comprise two-thirds of the participants; and one-third must be either first generation or low income. Additionally, 30% must be 9th graders at high risk for academic failure. All 50 participants have to be in the Franklin County school system.

Dedication of New Residence Hall and Renovated Classroom Building –

- Whitney M. Young Jr. Residence Hall – This 150 bed residence is the start of KSU's goal to build or acquire approximately 400 new beds over the next five to six years.
- Hathaway Hall Classroom Building – The renovation of this classroom building adds to the smart technology capacity of the university.

Kentucky State University recently participated in the 2008 White House Initiative on Historically Black Colleges or Universities (HBCU). Dr. Carl Smith, Director of the KSU concert choir was selected as one of the directors of the HBCU choir which represented the 105 HBCU's across the United States. This choir, which also included four KSU students, performed at the John F. Kennedy Center for the Arts in Washington, D.C.

Lastly, Kentucky State University's partnership with the Magnolia Shrimp Company is starting to produce results. This research project evolves around mass producing marine shrimp in an indoor setting. This work will add another potential "crop" to Kentucky farmers who are transitioning from growing tobacco.

## Update from Morehead State University



1. Ground was broken recently for the \$30 million health, education and research building, a partnership of Morehead State University, St. Claire Regional Medical Center and the University of Kentucky.
2. Animal science students, East Kentucky veterinarians and the horse industry are benefitting from the recent opening of MoSU's equine medical education center which includes a surgical suite and other treatment facilities.
3. MoSU has been notified of approval of a federal GEAR-UP grant in excess of \$10.1 million to help prepare East Kentucky middle and high school students for college.
4. President Wayne D. Andrews has been reappointed by Gov. Steve Beshear as one of four Kentucky representatives on the Southern Regional Education Board.
5. Dr. Cathy Gunn, dean of the College of Education, has been appointed by Gov. Beshear to the Education Professional Standards Board.
6. This year's freshman class has highest ACT composite average in our history at 21.6.
7. The University has purchased its first hybrid vehicle and is converting several campus delivery services to electric-powered carts as part of a campus-wide effort to be "greener".
8. We are projecting a fall enrollment increase of about one-half percent.
9. Morehead State is listed for the fifth consecutive year among top tier master's degree institutions in the South in America's Best Colleges by U.S. News and World Report.
10. For the fourth year in a row, MoSU's intercollegiate student-athletes have won the Ohio Valley Conference Institutional Academic Achievement Banner, giving us our ninth award in the 22 years it has been presented.
11. Dr. Doug Dennis, chair and professor of biological sciences, has received a grant of \$184,333 from the National Institute of Health (NIH) for research into the conversion of bacterial polymers into biodegradable plastics. The University's first postdoctoral researcher is co-investigator. Several undergraduate students also will be involved in the David Magrane Molecular Biology Laboratory.
12. A lake above the Arctic Circle in Canada near the Houghton Crater is being named for Morehead State University as a result of work by Charles Mason, professor of geoscience, as a member of the research team for the NASA-Houghton-Mars project.

# MURRAY STATE UNIVERSITY

## Regional education, International impact



Ranked among the nation's best by *U.S. News America's Best Colleges* for 18 consecutive years.

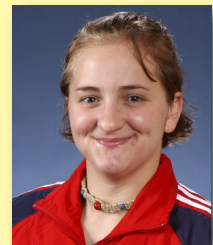
Named one of "America's Best Colleges" by Forbes.com. **Forbes**

## Global reach

MSU took the lead, through mathematics and statistics professor Dr. Renee Fister, in a partnership with Marymount University, Dominion University and the University of Tennessee in a grant for a study on the enhancement of the scope of viable vaccination and therapeutic strategies for cholera, a disease that, while rare in developed countries, is a real threat in nations with poor sanitation systems.



## Olympic Spirits



MSU graduate student, Emily Hoskins, was a gold medal winner at the 2008 Paralympic Games in Beijing, China.



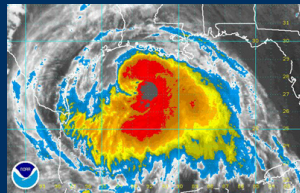
Brad White, sculptor and MSU grad, was one of 30 artists worldwide to be invited to show his work in Beijing during the Olympics.



Kermit Quisenberry, MSU alum, was tapped to referee soccer in Beijing during the Summer 2008 Olympics.

## Crisis response

The MSU Mobile Emergency Telecommunications Lab (METL) was deployed to Texas in the wake of Hurricane Ike. MSU researcher, Mark Garland, used the equipment to create a mobile communications source for Internet and cellular use for emergency response units.



## Green research

MSU's Center for Reservoir Research recently marked the 20th anniversary of its long-term monitoring program and the 400th monitoring cruise. The program provides a base of physical, chemical and biological data to researchers striving to understand the function of reservoirs in the environment.



MSU basketball program listed 30th on ESPN All-Time Rankings.



## ***Callahan Hall Renovation Saves Millions of Dollars, Opens Full***

NKU opened its newest residence hall this Fall when 400 students moved into James P. Callahan Hall. The building, was formerly a home for the elderly. Rather than build a new residential facility, NKU saved between \$5 million and \$7 million by purchasing and renovating the building, which increases the university's housing capacity to 12 percent of the student body, or roughly 1,850.

Callahan Hall features two learning communities: an Honors Community and an Entrepreneurship Wing. It houses

an incubator for the NKU Entrepreneurship program that will allow students to set up a business in their living space.

The building is the first residential facility to ever open at full occupancy at NKU. In fact, NKU students interested in university housing were again put on a waiting list. The university was forced to place some students in local hotels until NKU could accommodate them.

And the renovation had the additional benefit of removing an eyesore from the City of Highland Heights.

### ***\$15 Million Gift Will Help NKU Meet Vision 2015 Goals***

The Carol Ann and Ralph V. Haile, Jr./US Bank Foundation matched the largest single-source gift to a public university in Kentucky history in August with a \$15 million investment in the NKU College of Business.

The money will be used to enhance student and faculty recruitment and retention and help to internationalize the College.

The gift positions NKU to meet critical regional business needs - including the Vision 2015 goal of creating 50,000 new high-pay jobs by 2015.

### **Last-Dollar Scholarship Program Increases Enrollment From Urban Core**

*NKU's partnership with Holmes and Newport high schools to provide last-dollar scholarship funding to students from those schools is paying dividends.*

*As an example, 35 incoming students from Holmes High School enrolled at NKU this fall, compared to just 12 in 2006.*

*Overall, 24% of students in the Holmes and Newport high school senior classes enrolled at NKU - up from just 16.1% in 2006.*

### ***PACES to Keep NKU On High-Efficiency Pace***

As evidence of NKU's commitment to accelerating efforts that contribute to more efficient and effective operations, the President's Advisory Committee for Efficiencies and Savings (PACES) has begun its working to coordinate the formation, implementation and documentation of initiatives to enhance NKU's efforts to be good stewards of limited resources.

PACES seeks out creative cost-management ideas and is developing a campus-wide process for calculating, tracking and documenting cost savings.

## ***NKU's Center for Integrative Natural Science and Mathematics Makes Learning Fun and Takes Math and Science Education Off-Campus and Into Schools***

When Nobel Prize winner Stephen Sharp was asked when he knew he wanted to be a scientist, he said he knew in the fourth grade. Most of his colleagues, he said, say the same thing.

The Center for Integrative Natural Science and Mathematics (CINSAM) at NKU seeks out those young scientists-in-waiting and exposes them to new worlds and new opportunities.

In fiscal year 2008 alone, CINSAM had contacts with 11,775 students, teachers and community members, ranging from week-long teacher workshops to hands-on science camps for elementary, middle and high school students.

Nearly 650 local teachers attended workshops and in-service opportunities developed and presented by CINSAM.

Since 2004, CINSAM has worked closely with eight schools in the six counties immediately south of Boone, Kenton and Campbell, resulting in tremendous gains in statewide science tests. The most impressive result was in "School 5," where in 2003 test scores were at about 55 on an accountability index. After CINSAM engagement, in 2007 those scores were more than doubled to nearly 115 on the index. All eight schools showed gains during this period.

CINSAM Crime Scene Investigation (CSI) camps have spurred several communities to develop their own programs with guidance and assistance from CINSAM. Fort Thomas, Augusta and Pendleton County all have their own CSI camps now, expanding the reach and number of students served by 300%.

Female high school students who attended a CINSAM engineering camp showed remarkable gains in their knowledge and interest in engineering careers. For example, students indicated a 375% increase in knowledge about rapid prototyping and a 200% increase in knowledge about arc welding.



### Campus Success

- UK received a record number of undergraduate applications for Fall 2008 - 11,120, up 4.7 percent from last year.
- According to preliminary enrollment figures, there are 4,044 students in UK's 2008-2009 freshman class, up from 3,865 last year. This brings undergraduate enrollment to 18,995 and overall enrollment to 26,901.
- Minority enrollment increased significantly - the number of African-American freshmen reached an all time high of 341, a 32 percent increase over last year.
- The number of Governor's Scholars and Governor's School for the Arts Scholars in UK's first-year class hit a record high of 389, compared to 348 last year.
- Transfer student enrollment increased by nearly 100 students to 940.
- Based on preliminary analysis, 81 percent of Fall 2007 freshmen returned in Fall 2008 – a retention rate of 81 percent, a record high for UK and up 4.5 percentage points from a year ago. This is the result of the Provost's "War on Attrition", a series of strategic investments in faculty and staff and in student services.

### Student Success

- UK had 20 research papers accepted to the most recent National Conference on Undergraduate Research. The University of Michigan had 16. The University of Texas-Austin had 17.
- UK electrical engineering senior Donnie Keathley of Pikeville received a \$10,000 scholarship from the Astronaut Scholarship Foundation (ASF) on September 18. The 19 Astronaut Scholarships are the largest monetary award given in the United States to science and engineering undergraduate students based solely on merit. Mr. Keathley's research is focused on photonics and optical-based devices. Inspired by his semester in Malaysia, Keathley co-founded Symbios, a networking group for research students in different disciplines. Already the co-author of two journal articles, he hopes to continue his career as a university research professor.

### Research Success

- Dr. Stephen Dobson in Entomology became the first UK professor to receive a prestigious Bill & Melinda Gates Foundation grant. The \$5.3 million award will allow Dr. Dobson to further his research in reducing mosquito populations. His studies have implications for world health but also local impact as he works to commercialize his research and develop a new business in central Kentucky.
- Dr. Lisa Cassis in Nutritional Sciences (Medicine) and her colleagues received a \$10 million federal grant to study nutritional aspects of diabetes and cardiovascular disease.
- Dr. Robert Yokel (Pharmacy) and his colleagues received a \$2.5 million grant from the Environmental Protection Agency to study the health impact of nanoparticles dispersed in the environment.

### Serving Kentucky

- Each year, the Lexington Venture Club conducts an annual survey, showing which local companies received venture funding. Last year, 55 local companies received \$64.5 million in funding; 32 of the companies had UK connections.
- State and local government officials, including Kentucky Governor Steve Beshear, joined representatives from the UK College of Agriculture on September 12 to break ground on a \$28.5 million expansion and renovation of UK's Livestock Disease Diagnostic Center. The Diagnostic Center is a full-service animal health facility. Its faculty and staff handle one of the largest case loads in the nation, seeing 60,000 clinical cases and performing 5,000 animal autopsies every year. The laboratory also protects public health by diagnosing many zoonotic diseases that can potentially cross over into the public sector. Construction is expected to be complete by 2010.





# UNIVERSITY OF LOUISVILLE® It's Happening Here.

As with other schools in Kentucky, the fall semester is underway at the University of Louisville. Again this year, we welcomed the best

academically-prepared freshman class in our history. With an average ACT score of 24.4, our freshman class includes 60 percent of our students from outside Louisville and Jefferson County. This year's freshman class is also the largest in UofL's history, which creates many challenges in relation to classroom space deficiency (UofL is one of two schools the CPE space study shows with a current classroom space deficiency). Although the growth in our freshman class is a tremendous positive and needed to meet our commitment to the "double the numbers" objective set for us by the CPE, such scheduling and space problems produce great challenges for our students, faculty, and staff.

Over the last several months, the University of Louisville has announced several major research grants, including an \$11.1 million to the James Graham Brown Cancer Center, and a \$10.3 million grant to our Multidisciplinary Birth Defects Center in our School of Dentistry. We have been awarded another significant grant for our Cardiology program, and an announcement is forthcoming, pending final budget negotiations.

Last year, the University of Louisville achieved a fundraising record – raising \$86.6 million and we are over \$100 million as we move through the initial phase of our capital campaign – the largest annual fundraising ever – as we prepare for our next major capital campaign.

The University of Louisville continues to successfully incubate and nurture start-up companies from our research laboratories, and with the creation of NUCLEUS, the University has become more engaged in recruiting new life science companies to our community. We are hopeful that an incentive package by the Kentucky Economic Development Finance Authority that a company we met with during the BIO Conference in San Diego to relocate to Kentucky. Initially, this will mean 150 high-tech, high-paying jobs in our city. The attractiveness of Louisville for the company is two-fold: 1) The convenience of UPS and its overnight delivery system necessary for the timely transportation of stem cells; and 2) The opportunity to work with one of our distinguished faculty members who developed an applicable stem-cell research platform.

One local newspaper in our community has extensively covered an investigation into allegations of financial impropriety by a former dean at the University of Louisville. The University brought the allegations to the Federal authorities – the investigation continues. Subsequent to this, an allegation was made by a reporter that a Ph.D. degree at the University of Louisville had been inappropriately awarded to an individual who previously had a contractual relationship with the former dean. The individual in question had completed their coursework for the Ph.D. at another institution but researched, wrote, and defended his dissertation at UofL when the former dean came to UofL. We have appointed a blue-ribbon panel that includes individuals like former Supreme Court Justice Martin Johnstone, to do a review of the allegations and to report back to the Board as soon as possible. In addition to this blue-ribbon panel, I have order an audit of the College of education and Human Development's financial records, I have ask for a faculty senate review of the university's grievance policies , and an independent audit by Cotton & Allen of the university's business practices relating to research administration. The university is also working with both faculty and staff senate's to review the grievance process for any employee who believes the university policies have been violated and feel comfortable bringing those concerns forward through approved and sanctioned university procedures. The Board is prepared to take appropriate action based on facts. It is unfortunate that SACS allowed itself to be quoted on this issue.



A LEADING AMERICAN UNIVERSITY WITH INTERNATIONAL REACH

### **WKU ENROLLMENT INCREASES TO 19,785; NUMBER OF AFRICAN-AMERICAN FIRST-TIME FRESHMEN UP 19.6%**

Enrollment at WKU has increased for the 11<sup>th</sup> consecutive year to 19,785 students, including an increase of 19.6 percent in the number of African-American first-time freshmen. WKU has 500 African-American first-time freshmen, an increase of 82 over last fall. WKU's total fall enrollment is up 520 students (2.7 percent) from fall 2007 with the number of first-time freshmen up 209 students (6.7 percent) to 3,323. The number of international first-time freshmen is up 51 students (42 percent) to 171.

### **WKU STUDENTS EARN NATIONAL SCHOLARSHIPS**

Two WKU students received prestigious Barry M. Goldwater Scholarships. Jacob Vervynckt and Rachel Wiggington were two of 321 students chosen nationally for the 2008-09 scholarships. Brooke Shafar, a May 2008 graduate, received a 2008-09 J. William Fulbright Scholarship to teach English in Germany and conduct research on German cinema.

### **HEATHCO OPENS WORLD HEADQUARTERS IN WKU CENTER**

HeathCo, which has captured by far the largest market share in specialty electrical products such as motion-activated lighting, door chimes and wireless lighting controls, has located its headquarters in WKU's Center for Research and Development. About 42 percent of the current 60-plus employees have WKU degrees and the company plans to add 50 more jobs in the near future. HeathCo has also developed partnerships with the science and business colleges at WKU to engage students and faculty.

### **WKU APPOINTS ITS FIRST SUSTAINABILITY COORDINATOR**

WKU graduate Christian Ryan-Downing has been appointed as the University's first Sustainability Coordinator. Ryan-Downing will help identify and develop opportunities for reducing the University's environmental footprint, and operational costs, through campus initiatives that reduce waste and use energy, water, and other resources more efficiently.

### **NEW CENTURY OF SPIRIT CAMPAIGN TOPS \$124 MILLION**

WKU's "New Century of Spirit" capital campaign has passed \$124.2 million. The goal is to raise \$200 million by 2012.