

**KENTUCKY COUNCIL ON POSTSECONDARY EDUCATION
COMMITTEE ON EDUCATIONAL OPPORTUNITIES**



April 28, 2026 – 1:00 p.m. ET
Virtual meeting via ZOOM webinar

**Indicates action item*

| | | |
|--------------|---------------------------------------|----|
| I. | Call to Order | |
| II. | Roll Call | |
| III. | Approval of the Minutes* | 2 |
| IV. | Welcome/CPE Updates | |
| V. | Admissions Redesign | 4 |
| VI. | Dual Credit | 22 |
| VII. | Next Steps | 40 |
| VIII. | Adjournment | |

MEETING MINUTES

Draft for approved by the Committee on April 28, 2026

Who: Kentucky Council on Postsecondary Education
Meeting Type: Committee on Educational Opportunities
Date: January 26, 2026
Time: 1:00 p.m. ET
Location: ZOOM Teleconference

CALL TO ORDER

The Committee on Educational Opportunities (CEO) met Monday, January 26, 2026, at 1:00 p.m., ET. The meeting occurred by ZOOM teleconference. Chair Elaine Walker presided.

ROLL CALL

There was a quorum of 4 voting committee members in attendance.

- Rev. CB Akins – attended
- Whitney Allen – did not attend
- Dr. Rochelle Brown – did not attend
- David Carpenter – did not attend
- Robert Croft – attended
- Dr. Kellie Ellis – attended
- Elaine Walker - attended

Dr. Dawn Offutt, Executive Director for Student Access, served as recorder of the meeting minutes.

APPROVAL OF THE MINUTES

The minutes of the October 27, 2025, meeting were approved as distributed.

WELCOME/CPE UPDATES

CPE President Aaron Thompson provided a data update on increasing percentage of students reported in the areas of enrollment, retention, and persistence. He stated while those are increasing, it's at a slower rate. He also shared information related to CPE's latest report on student debt levels, which shows that six out of ten Kentucky undergraduate students are now graduating debt-free, among other findings. Dr. Thompson reiterated the importance of the work of the CEO in support of identifying and closing gaps for students

from opportunity populations and through developing strategies that outline opportunities for growth.

REPORTS FROM KENTUCKY STUDENT SUCCESS COLLABORATIVE, STUDENT BASIC NEEDS, AND ADULT LEARNERS

Dr. Lilly Massa-McKinley, Assistant Vice President of the Kentucky Student Success Collaborative (KYSSC), shared an update on the unit's work as a first-of-its-kind statewide center that connects two- and four-year institutions with policymakers and business leaders to accelerate degree completion and economic mobility across the Commonwealth. This update was supplemented by more directed information regarding the statewide Student Basic Needs Action Network, which facilitates the placement of benefit navigators on campuses and creates data-driven strategies to tackle food and housing insecurity. Additionally, Ms. Tracy Teater, Associate Director, discussed the unit's initiatives to support adult learners through the Kentucky Adult Attainment Network; this work focuses on removing institutional barriers and awarding credit for prior learning to ensure Kentuckians aged 25 and older can successfully re-engage with postsecondary education. Ms. Maddie White, Senior Associate with the CPE Data and Advanced Analytics unit, shared data to support these efforts, highlighting notable increases over the last five years.

ADJOURNMENT

The Committee adjourned at 1:55 p.m. ET.



The Great **ADMISSIONS REDESIGN**

Implementation Plan ●
Kentucky Council on Postsecondary Education



Lumina[™]
FOUNDATION

ESG

Education
Strategy
Group

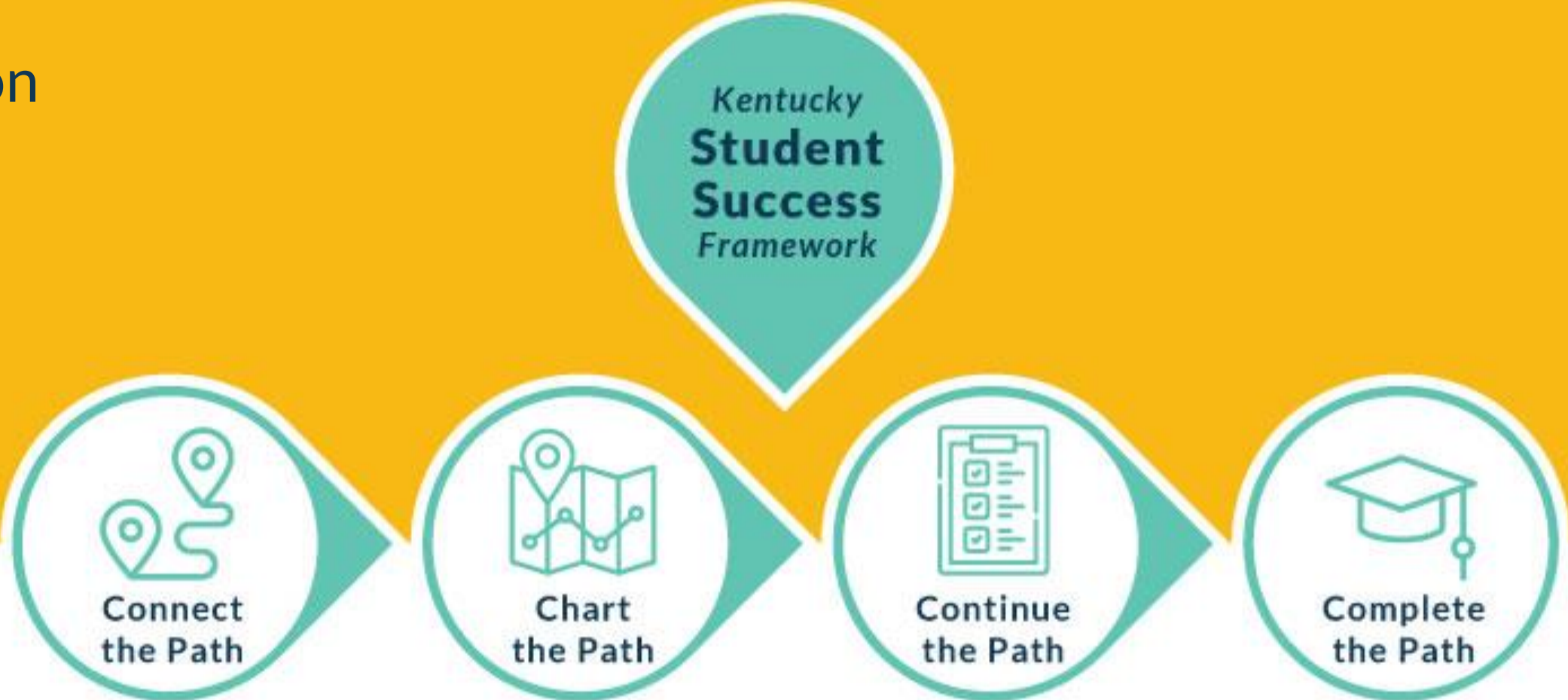


**The Kentucky
Student Success
Collaborative**

The Kentucky Student Success Collaborative

Student Access and Success,
Council on Postsecondary Education

- Admissions Redesign
- Transfer Pathways
- Gateway Course Success
- Student Basic Needs
- Mental Health
- Adult Attainment



Our Objectives:

1. Foster a culture of collaboration
2. Build capacity for leading change
3. Measure gains in student success



“ Complexity is the friend of the privileged. ”

-DR. RICHARD REEVES

Implementation Plan Overview

Through broad stakeholder engagement, a design thinking process, and student-centered mindset, the Kentucky Student Success Collaborative has worked with education partners to identify shared priorities and persistent challenges along the college admissions journey for students seeking to transition to postsecondary education after high school. Over the past 12 months, stakeholders have identified five (5) strategic priorities; codified our commitments to proactivity, automation, and transparency; and developed an 18-month implementation plan to move the work forward.

ADMISSIONS REDESIGN VISION

Alleviate student stresses and elevate student joy along the college admissions journey.

MAPPING THE LANDSCAPE

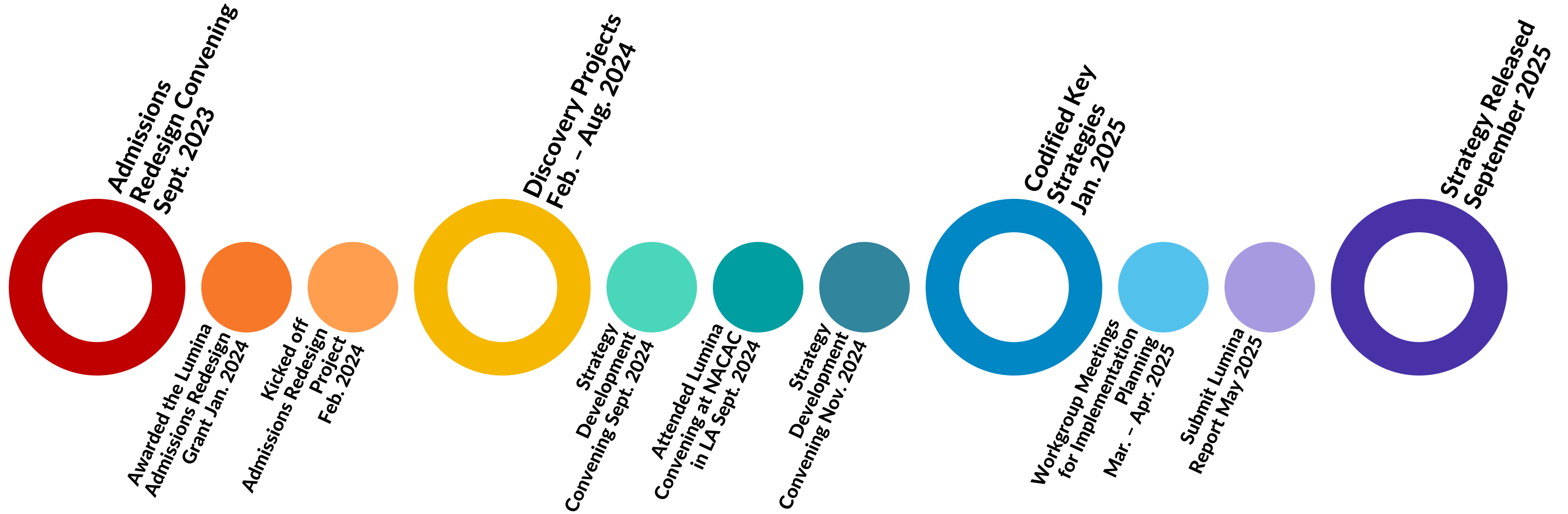
Completed 4 discovery projects to fully understand the current state picture of college admissions. Discovery projects included:

1. Data Exploration
2. Artificial Intelligence Webinar Series
3. College Admissions Staff focus groups
4. Student Journey Mapping

STRATEGIC PRIORITIES

1. Accessible Transcripts
2. Dual Credit Opportunities
3. Transparency in Financial Aid
4. Proactive 9-12 Grade Communications
5. Seamless Transfer

Admissions Redesign Timeline



KY Partner Engagement

The Great
ADMISSIONS REDESIGN



Admissions Redesign Process

Adapted from the CivicLab's process wheel for collaborative action, the KYSSC has facilitated a structured process of collaboration and design thinking to center the student journey and identify critical barriers and solutions to create a more simplified, proactive, automated, and transparent college admissions experience.



Revisiting the Data

Kentucky's College-going Trends

| | Overall Rate, Class of 2022 | Change Over Time | Rate Among Students of Color, Class of 2022 | Rate Among Low Income Students, Class of 2022 |
|--|------------------------------------|-----------------------------------|---|--|
| College-Going Rate | 53.4% | -8.4% change from 2012 to 2022 | 49.0% | 41.2% |
| FAFSA Submission Rate (data from NCAN's FAFSA Tracker) | 58.5% | +4.2% change from 2021 to 2022 | +8.0% * change from 2021 by concentration of Students of Color | +4.6% * change from 2021 by School Income Level |

* Data provided in NCAN's FAFSA Tracker did not match column headers, but I pulled a statistic as close as possible to the desired information.

Dual Credit Discovery Project

KY high school graduates who complete at least one dual credit course have the following outcomes compared to graduates that do not complete dual credit:

39.9 pp higher college-going rate

.45-point higher first-year GPA

1.3 more credit hours taken in the first term

11.8 pp higher second-year retention rate

21.5 pp higher completion rate

Dual Credit Discovery Project

KY opportunities for improvement:

- **57%** of high school graduates didn't participate in Dual Credit (DC)
- **26%** of DC completers do not matriculate to postsecondary edu
- **21 pp** gap between paid lunch and Free/Reduced Price Lunch (FRPL) students in DC participation
- **14 pp** gap between non-Underrepresented Minority (URM) and URM students in DC participation
- **Lowest** DC participation rates in Louisville, Lexington, Northern KY, and Big Sandy areas.

How might we leverage a deeper understanding of the student experience as a means to alleviate their stresses and elevate their joy throughout the college admission journey?

September 2024 - October 2025

Current State of KY Admissions

Applications

- Students in the journey mapping study applied to an average of 5 colleges each
- KCTCS has a system-wide application, but it is not a part of Common App.
- KCTCS grads with a 2.0+ GPA are guaranteed transfer admission to any public university

Transcripts

- 45% of KY high school students take at least 1 dual credit course.
- Students are sometimes unaware they are enrolled in a dual credit course, or which institution is granting the credit.
- Students must request and pay for transcripts for all dual credit courses from multiple institutions by navigating National Student Clearinghouse.

Financial Aid

- Findings from the Student Journey Mapping Project revealed:
 - Students are very concerned about costs of college.
 - Students report being loan averse at the undergraduate level.
 - Students are applying for many scholarships and having little success

Communications

- In 2023, CPE led a pilot project sending a letter to high school seniors in 3 districts listed in the Directory with information regarding college admissions standards and application links
- The [Futuriti.org](https://www.futuriti.org) website launched in Feb. 2025 as a centralized point for college-going resources for students and families.

Desired State of KY Admissions

Applications

- Students apply to any college or university in Kentucky through one application portal.
- All graduating high school seniors receive an offer of admission to at least 1 college or university in KY.

Transcripts

- Students consent for colleges/universities to secure their dual credit transcripts on their behalf through NSC.
- Students request their final high school transcript, and it is sent without errors.

Financial Aid

- Students understand the direct and indirect costs of college as well as grants, scholarships, work-programs, loans, and other income sources to fully cover the costs for any KY institution.

Communications

- All high school students (grades 9 – 12) receive timely communications promoting college-going behaviors and early postsecondary opportunities.
- Students and families access the [Futuriti.org](https://www.futuriti.org) website as a comprehensive resource for college and career planning.



KENTUCKY'S ADMISSIONS REDESIGN STRATEGY

Strategic Priorities and Shared Commitments:

1. Accessible Transcripts
2. Expand Dual Credit Opportunities
3. Transparency in Financial Aid
4. Proactive 9-12 Grade Communications
5. Seamless Transfer

Reflections from Partners

“Lots of stakeholder engagement from multiple agencies and institutions.”

“Cross-agency collaboration is breaking down our silos.”

“Ensuring that student needs, not institutional processes are driving decisions.”

“Trying to figure out what red tape we need to cut.”

“Learning that we all have challenges in common.”

“Push for support for your students. We are their advocates at this level. And ultimately, it is about serving their needs, not our own.”

“Cross departmental and agency collaboration and work.”

“You have to build trust among competing institutions to work towards solutions that will benefit students.”

“Breadth of institutions and partners coming together to articulate shared interests.”

“Open discussions leading to solid priorities.”

“Student voice was incredible.”

“Consider all the student population, not just traditional freshmen.”

“Focus on student outcomes first; just because something has always been done in a certain way doesn't mean it's the best for students.”

Thank you, Lumina

Participating in the Great Admissions Redesign has led to transformational change in Kentucky and allowed partners to build relationships that will continue to foster collaborative approaches to increasing the college-going rate among high school graduates.



Dual Credit in KY

Dr. Robin Hebert, Student Access & Success

Kentucky Council on Postsecondary Education

CEO Meeting, April 28, 2026





Dual credit:

a type of early postsecondary opportunity (EPSO) in which a high school student can earn college and high school credit simultaneously.

Other EPSOs that are not dual credit:

Dual Enrollment

Advanced Placement (AP)

The International Baccalaureate (IB)

Cambridge

Types of Dual Credit Courses

| General Education | Career & Technical Education |
|--|--|
| <p>5 Main Categories:</p> <ul style="list-style-type: none">• Written & Oral Communication• Arts & Humanities• Social & Behavioral Sciences• Natural Sciences• Quantitative Reasoning | <ul style="list-style-type: none">• Aligned to KDE's Career & Technical Pathways• Connected to Kentucky's high demand and emerging fields like:<ul style="list-style-type: none">• Healthcare• Education• Manufacturing & logistics• Construction• Professional, scientific & technical services• Aerospace & aviation• Behavioral health careers |
| <p>See Kentucky's General Education Transfer Policy for more on the State-wide General Education Core</p> | <ul style="list-style-type: none">• Kentucky Career & Technical Ed Programs• Kentucky's Top 5 In-Demand Sectors |

Benefits of Dual Credit Participation

- 1) Higher College Matriculation
 - 2) Lower Unmet Financial Need and Time to Degree
 - 3) Higher First-Year GPA, Credits Earned, Persistence & Retention
 - 4) Higher Postsecondary Degree Completion
-

These benefits apply across all student demographic groups.

Kentucky's 2030 Dual Credit Attainment Goal

The **first of its kind nationally**, Kentucky's Dual Credit Attainment Goal states that:

50% of Kentucky high school students should graduate high school having completed at least one dual credit course with a qualifying grade of a C or higher.

Dual Credit General Education Scholarship Impact (C/O 2018 to 2021)

Received Dual Credit
Scholarship

82.3%

College-Going Rate

82.2%

Persistence Rate

2.79

First Year GPA

Did Not Receive Dual Credit
Scholarship

40.6%

College-Going Rate

64.6%

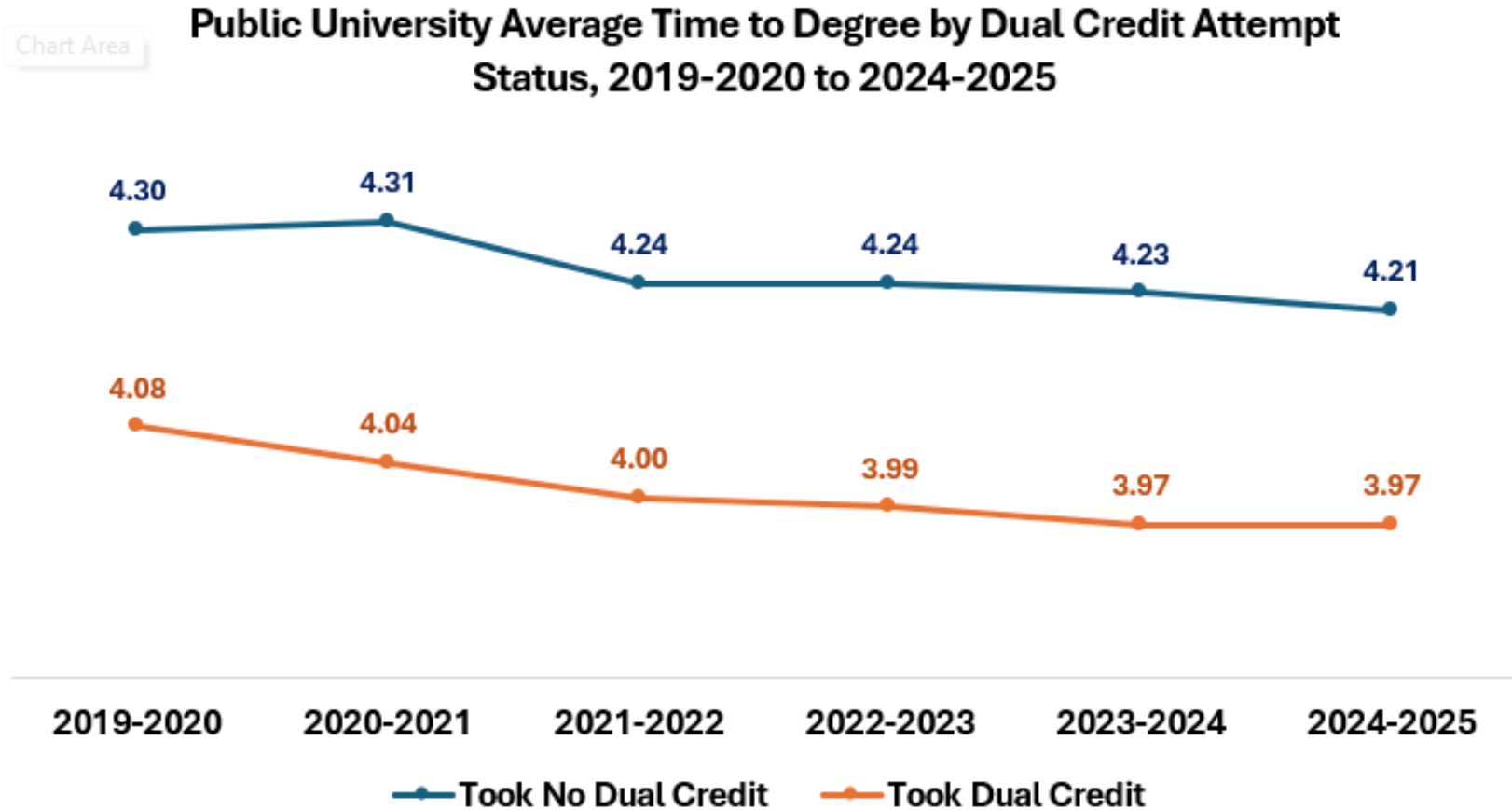
Persistence Rate

2.06

First Year GPA

Recipients of the general Dual Credit Scholarship have nearly a **42pp higher college-going rate**, **20pp higher persistence rate**, and nearly **three-quarters of a grade point higher first year GPA**.

Average University Time to Degree by DC Attempt

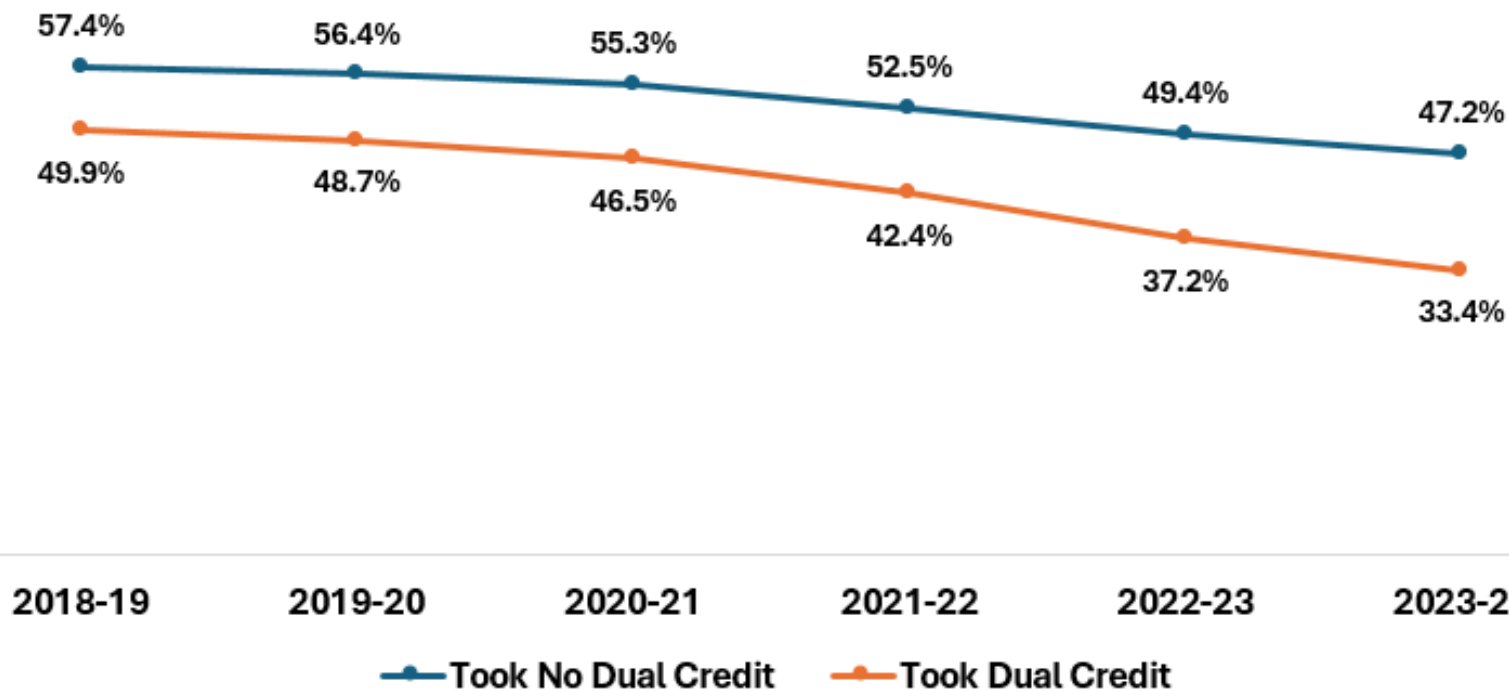


Among all university graduates, time to degree is about **.30 academic years** less among those who attempted dual credit in high school compared to those who did not.



Proportion of All Graduates with Any Debt by DC Attempt

Proportion of Public Postsecondary Graduates with Any Debt by Dual Credit Attempt Status, 2018-2019 to 2023-2024

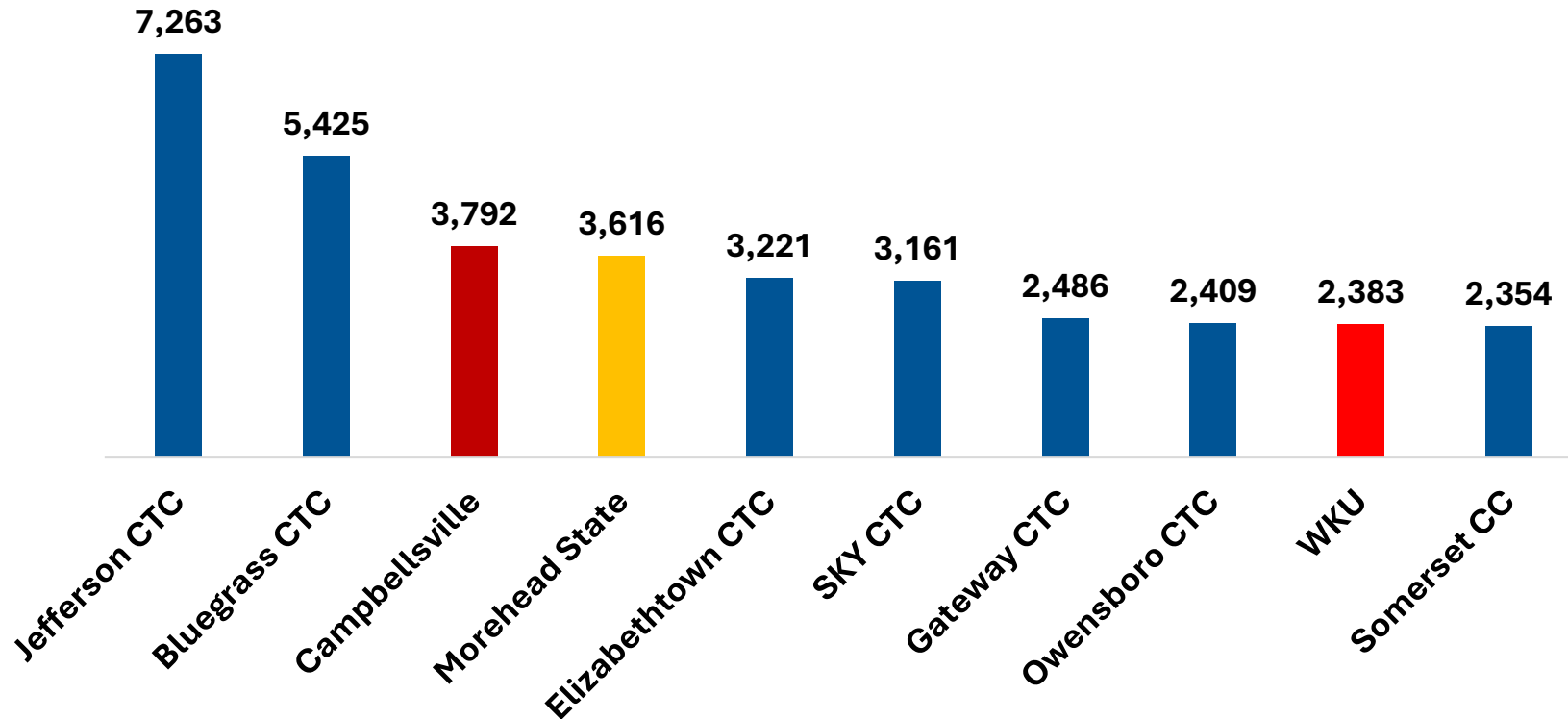


Among all public postsecondary graduates, the proportion of graduates with debt who attempted dual credit is **14-18pp lower** than the proportion of graduates with debt who did not attempt dual credit.



Dual Credit Enrollment by Sector and Institution

Top 10 Dual Credit Enrollment by Institution
in 2024-2025

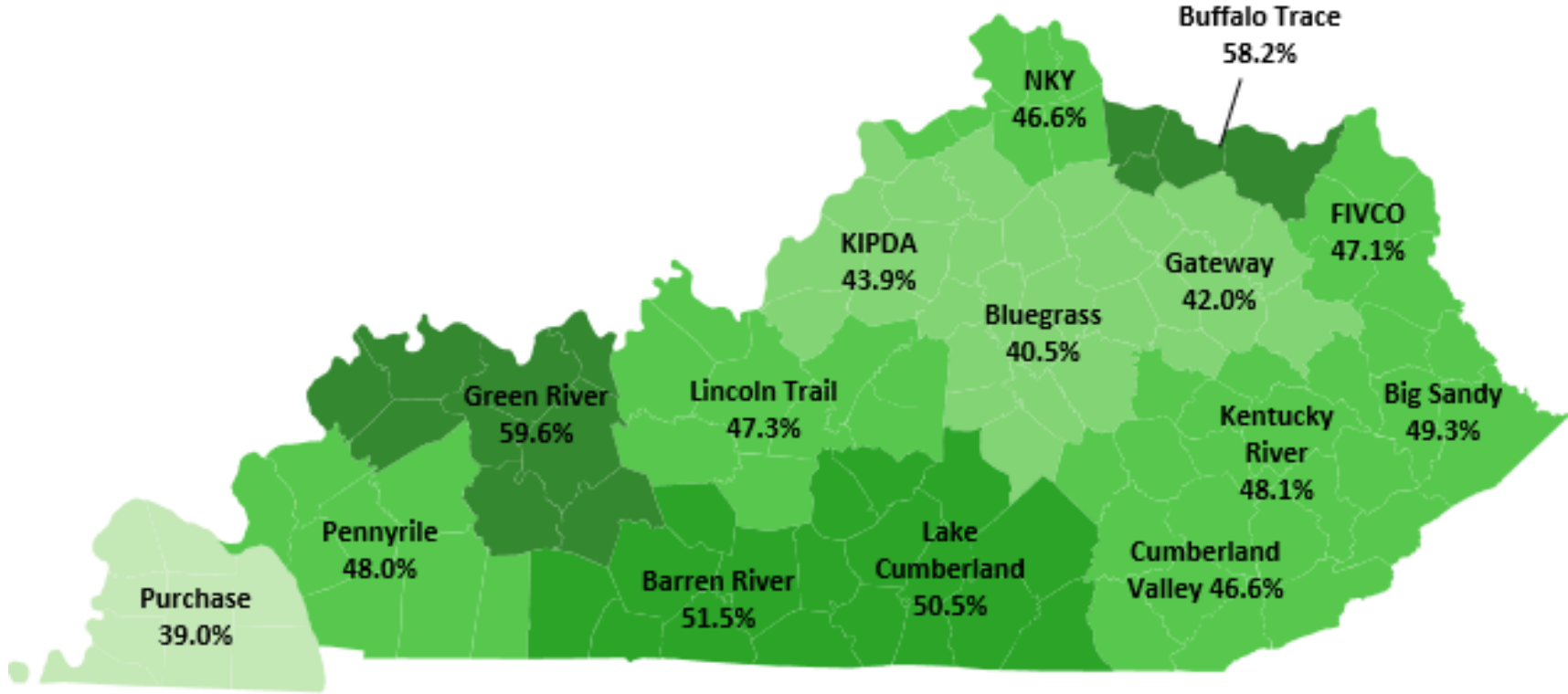


**2024-2025
Enrollment by
Sector:**

KCTCS: 37,890
Four-Year Public: 14,532
AIKCU: 7,618

Student Completion: Geographic Breakout

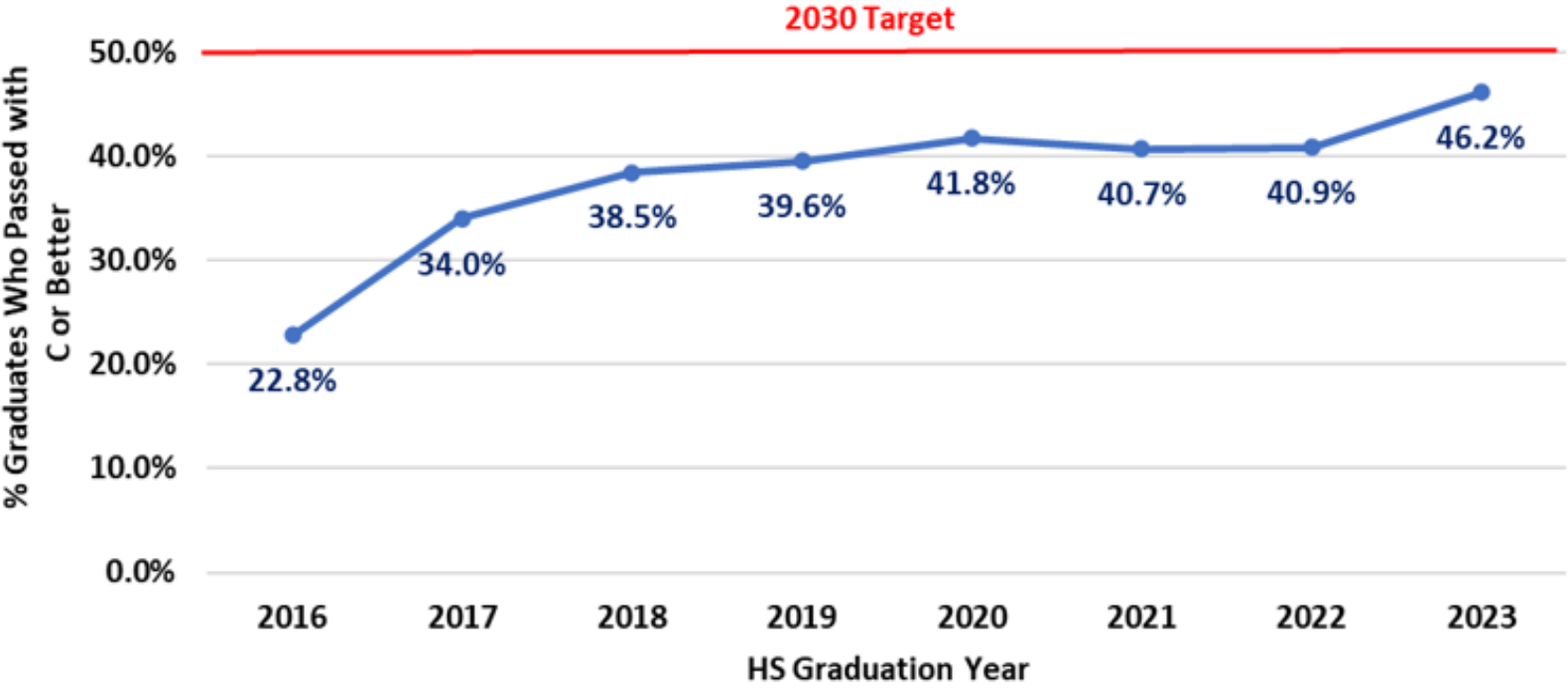
Proportion of 2023 Kentucky Public High School Graduates with Successful Dual Credit Completion by Area Development District



| | |
|--------------------------|--------------|
| Green River | 59.6% |
| Buffalo Trace | 58.2% |
| Barren River | 51.5% |
| Lake Cumberland | 50.5% |
| Big Sandy | 49.3% |
| Kentucky River | 48.1% |
| Pennyrile | 48.0% |
| Lincoln Trail | 47.3% |
| FIVCO | 47.1% |
| Cumberland Valley | 46.6% |
| Northern Kentucky | 46.6% |
| KIPDA | 43.9% |
| Gateway | 42.0% |
| Bluegrass | 40.5% |
| Purchase | 39.0% |

Student Completion: All Students

Proportion of Kentucky High School Graduates Who Passed a Dual Credit Course with a "C" or Better

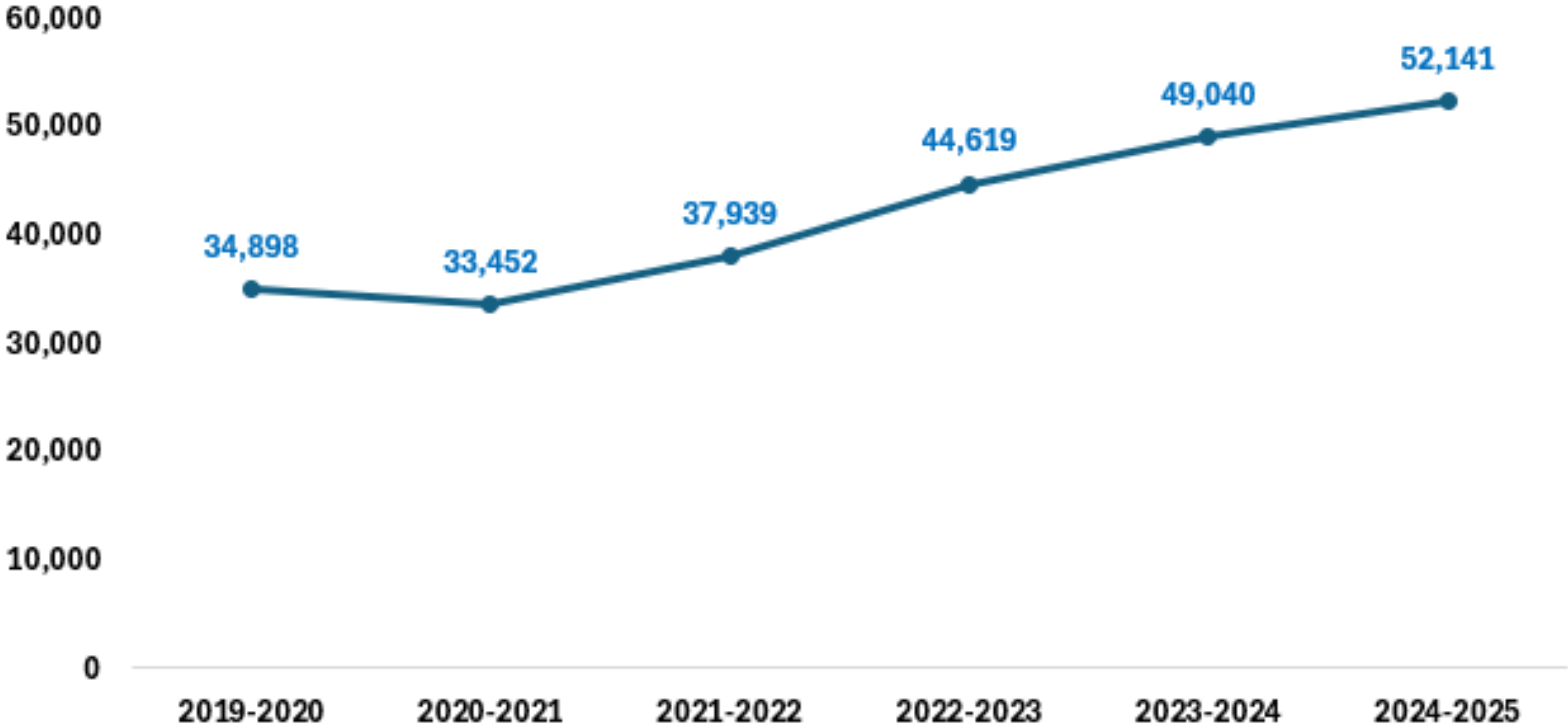


The percentage of high school graduates with successful dual credit completion has increased by 23.4pp



Student Enrollment: All Students

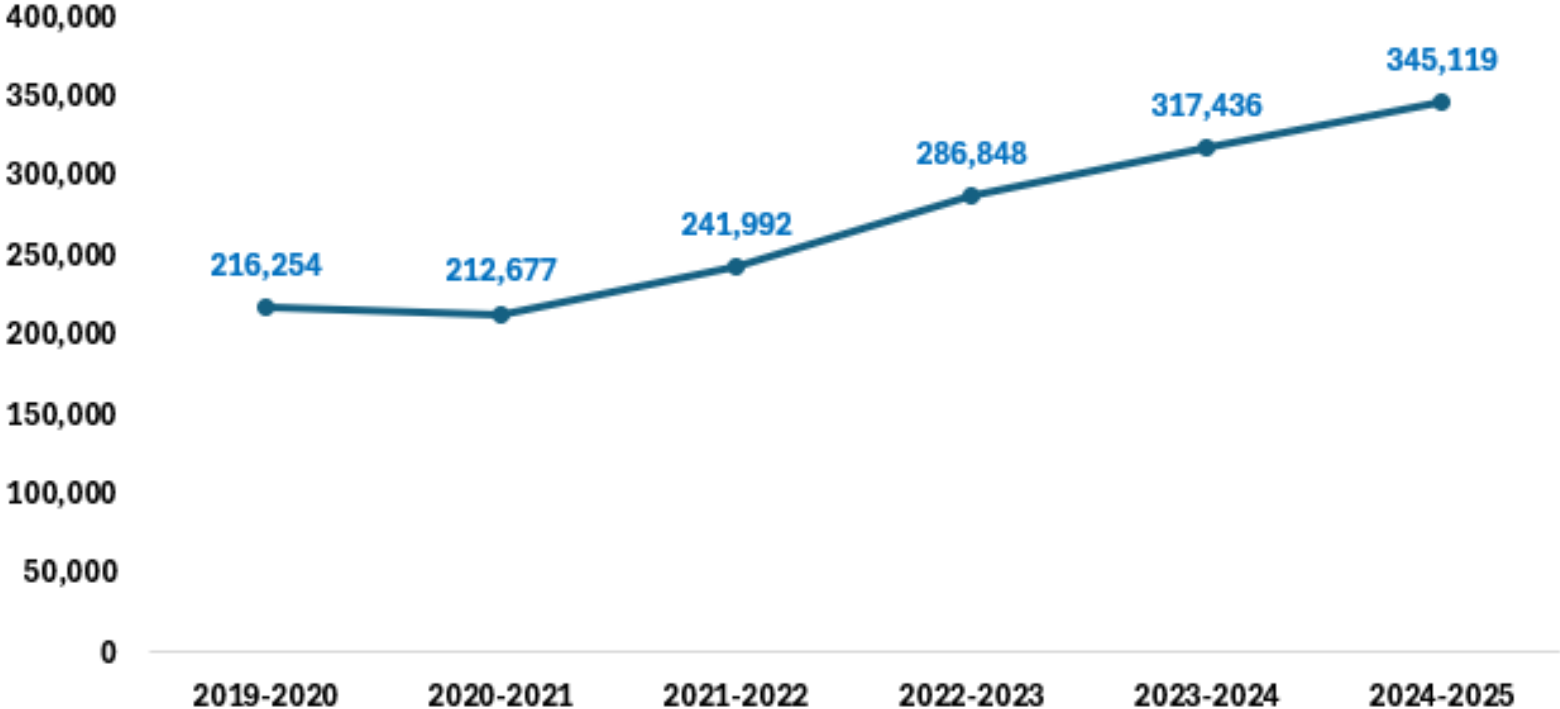
Total Dual Credit Enrollment of All Students,
AY 2019-2020 to AY 2024-2025



52,141
Enrolled in dual credit
+49.4% since 2019-20

Student Earned Credit: All Students

Total Dual Credit Hours Earned by All Students,
AY 2019-2020 to AY 2024-2025



345,119
Earned credit hours
+59.6% since 2019-20

NEW CPE REPORT:

Beyond Participation:
How Dual Credit Delivery
Influences the Likelihood of
Postsecondary Enrollment

Summary

- **Dual credit is highly correlated with college going**
- **Course modality matters**
- **The dual credit modality most highly correlated with college enrollment in Kentucky are:**
 - **In-person**
 - **Rigorous**
 - **Integrated into the regular school day**



Current & Emerging Strategies

Increase communication

Provide professional development

Encourage best practice

Ensure transferability & applicability

Launch family & community engagement
initiative

Kentucky's Dual Credit Policy

Dual Credit Supports & Resources

Supports

- Dual Credit Scholarship Program
- Dual Credit Advisory Council
- Dual Credit Community of Practice
- Futuriti
- Professional Development
- EPSO Toolkit
- Webinar Series
- Data Monitoring & Analysis
- Kentucky Advising Academy
- Commonwealth Education Continuum

Resources

- [Dual Credit Policy](#)
- [Dual Credit Dashboard](#) (CPE)
- [Dual Credit Feedback Report](#) (KYSTATS)
- [High School Feedback Report](#) (KYSTATS)
- [General Education Transfer Policy](#)
- [Dual Credit Courses Offered Dashboard](#) (KDE)
- [Dual Credit and Student Success Report](#) (CPE)
- [Beyond Participation Report](#) (CPE)

Questions About Dual Credit?

Please contact:

Robin Hebert, EdD

Robin.Hebert@ky.gov

Senior Fellow of Policy Development

Student Access and Success

KY Council on Postsecondary Education



CEO Next Steps

Dr. Dawn Offutt
Executive Director for Student Access
Kentucky Council on Postsecondary Education

What We've Heard

- Need for collaboration among those working with students with disabilities in both K-12 and postsecondary education
- Statewide initiatives for students for first generation and students from low-income backgrounds through the GEAR UP Kentucky 5 grant
- Statewide initiatives for low-income students and adult learners through the Kentucky Student Success Collaborative
- Initiatives to increase student enrollment in postsecondary education

Where We're Headed

- Support for all students including those who are underresourced and underserved (e.g., first-generation, low-income, students with disabilities, adult learners)
- Campus site visits and presentations
- KynextED Initiative – Communities of practice that connect K-12 and postsecondary professional networks to 1-provide insight on eliminating barriers to postsecondary education for students from underresourced and underserved populations and; 2-increase the transition from K-12 to postsecondary for students from underresourced and underserved populations by providing future-focused, innovative, next-level recommendations to the CEO for smoother transitions to postsecondary
- CEO bring recommendations to the Council for action as applicable