



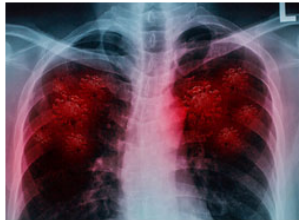
Promoting Social Justice through Human-Centered Computing

DR. PAMELA WISNIEWSKI

ASSOCIATE PROFESSOR, PAMWIS@UCF.EDU

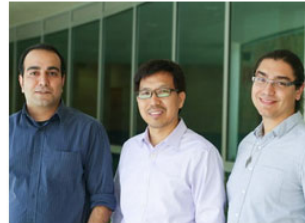
DEPARTMENT OF COMPUTER SCIENCE, COLLEGE OF ENGINEERING AND COMPUTER SCIENCE

[HTTPS://STIRLAB.ORG](https://stirlab.org)



AI Can Detect COVID-19 in the Lungs Like a Virtual Physician, New Study Shows

September 30, 2020 — A University of Central Florida researcher is part of a new study showing that artificial intelligence can be nearly as accurate as a physician in diagnosing COVID-19 in the lungs. The study, recently published in Nature Communications, shows the new technique...



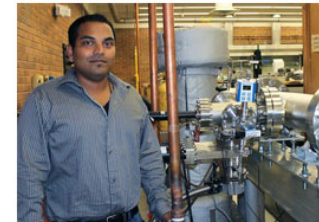
New Tool to Quickly Cull Biobank Data, Accelerate Research of Genetic Diseases

June 20, 2018 — A couple of computer scientists are getting ready to take the DNA testing technique that made Ancestry.com family trees possible to a whole new level, which may give doctors a powerful new tool against hereditary diseases such as breast cancer,...



UCF Wins National Competition to Make Driving Safer

November 21, 2019 — UCF has won a national competition to make driving safer, beating out more than 50 other teams, the U.S. Department of Transportation announced today. "UCF's Smart and Safe Transportation Team and I are honored to be selected by the U.S...."



UCF Researcher Earns 2nd Department of Defense Grant to Detect Opioids, Toxins

July 6, 2020 — Subith Vasu, UCF associate professor of mechanical and aerospace engineering, was recently awarded the prestigious Director's Fellowship from the U.S. Defense Advanced Research Projects Agency, one of just 12 researchers nationally to earn the 2020 research grant. Vasu, an expert...

<https://www.cecs.ucf.edu/news>

College of
**Engineering &
Computer Science**
Opportunity Starts Here

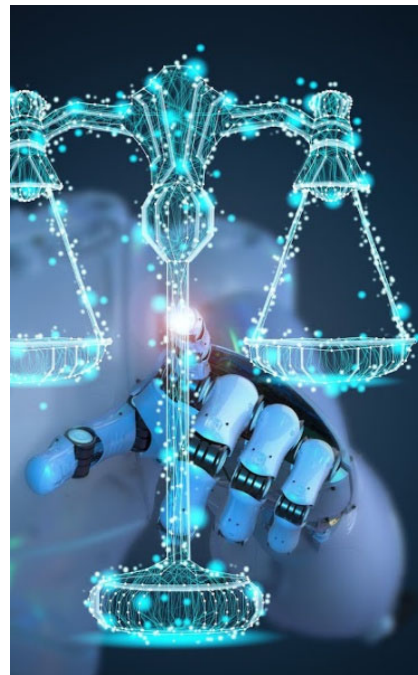
Changing the World through **STEM**

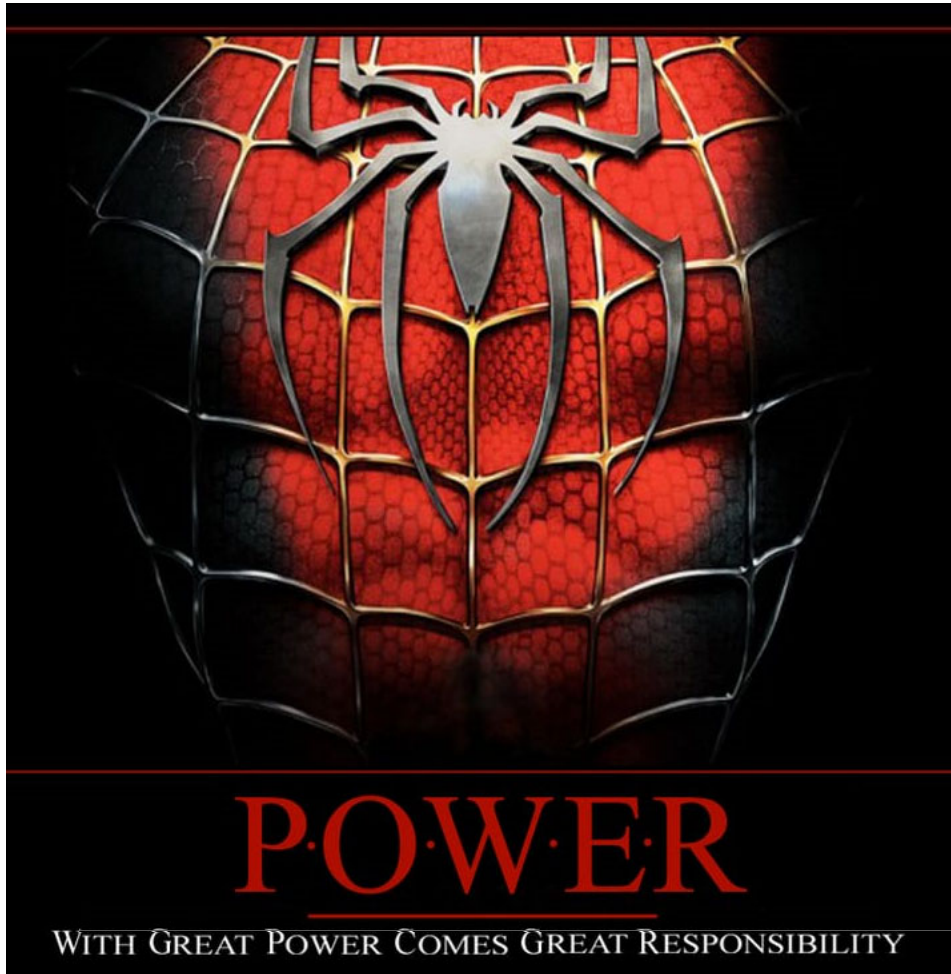


Technology as the Great Equalizer

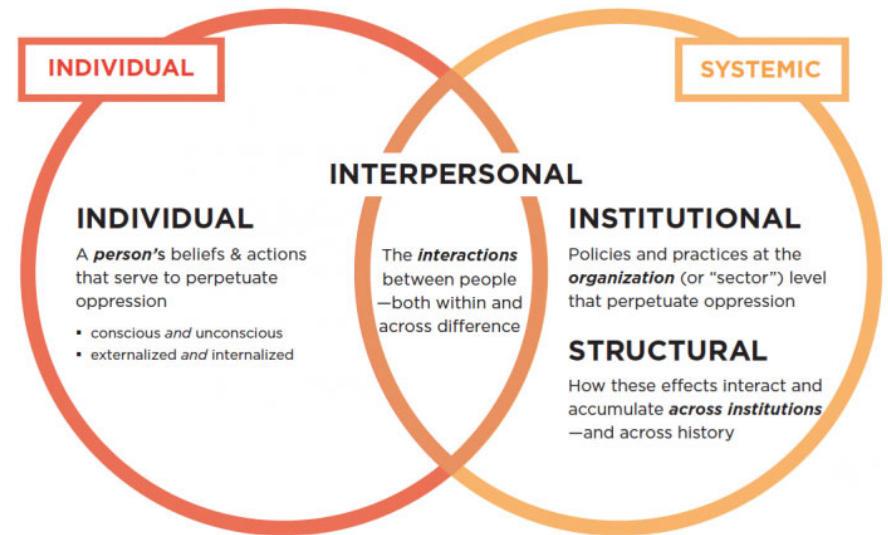
§ Artificial Intelligence (AI) Systems are . . .

- Determining criminal sentences
 - Teaching our children
 - Determining foster case placements
 - Deciding patient treatment
 - Replacing humans in our daily activities
- **The systems we build have real life and death consequences.**



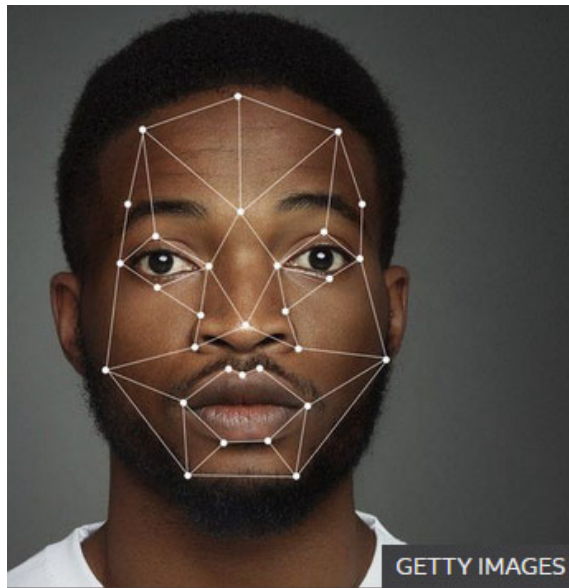


Systemic Oppression Exists



And technology can be used to perpetuate systemic oppression or to eradicate it.

Building Systems of Oppression or Social Justice?



GETTY IMAGES

Tech giant IBM is to stop offering facial recognition software for "mass surveillance or racial profiling".

A US government study suggested facial recognition algorithms were less accurate at identifying African-American faces

T MIT Technology Review

Deepfake porn is ruining women's lives. Now the law may finally ban it.

Mort, a poet and broadcaster in Sheffield, UK, was the victim of a fake ...
Sensity AI, a research company that has tracked online deepfake ...
2 days ago



S ScienceAlert

AI Can Now Learn to Manipulate Human Behavior

The first experiment involved participants clicking on red or blue coloured boxes to win a fake currency, with the AI learning the participant's ...
2 days ago



TNW

New AI tool detects hiring discrimination against ethnic minorities and women

New AI tool detects hiring discrimination against ethnic minorities and women. The system uses supervised machine learning to analyze search ...
3 weeks ago



Myths

§ *“It’s not my problem.”*

§ *“It’s not the problem I am trained to solve.”*

A Case for Human-Centered Computing

■ Make Humans the Center of STEM Innovation:

- Engage with users to understand their diverse needs **BEFORE** a system is developed
- Leverage real-world data sets that do **NOT** perpetuate existing biases
- Use participatory approaches to engage users **DURING** the systems design phase
- Continuously collect feedback from users to **EVALUATE** how system use impacts their lives
- Realize that more technology may **NOT** always be the best solution

“Know the
user,
you are not the user

*“Success is not delivering a feature; success is learning how to
solve the customer’s problem.” –Mark Cook*

Thank you. Charge on!

- **Pamela Wisniewski, Ph.D.**, University of Central Florida, pamwis@ucf.edu

Associate Professor, Department of Computer Science

Chair, CECS Equity, Inclusion, and Diversity Taskforce,

<https://diversity.cecs.ucf.edu/eid-taskforce/>

Socio-Technical Interaction Research (STIR) Lab: <http://www.stirlab.org>

Industry-focused User Experience (iUX) Academy: <http://www.cs.ucf.edu/ux/>



UCF Honors Computer Science Assistant Professor Who Uses Technology to Change Lives

April 3, 2019 — Pamela Wisniewski and two other UCF faculty members who use the power of technology to make the human experience better were recognized today with Reach for the Stars awards during this year's UCF Founders Day Honors Convocation. The award recognizes...