

Creating Systems of Support Through Basic Needs Strategies for Adult and Parenting Students

Student Success Summit

March 26, 2025





Arion Jett-Seals
Associate Director, Student Basic
Needs



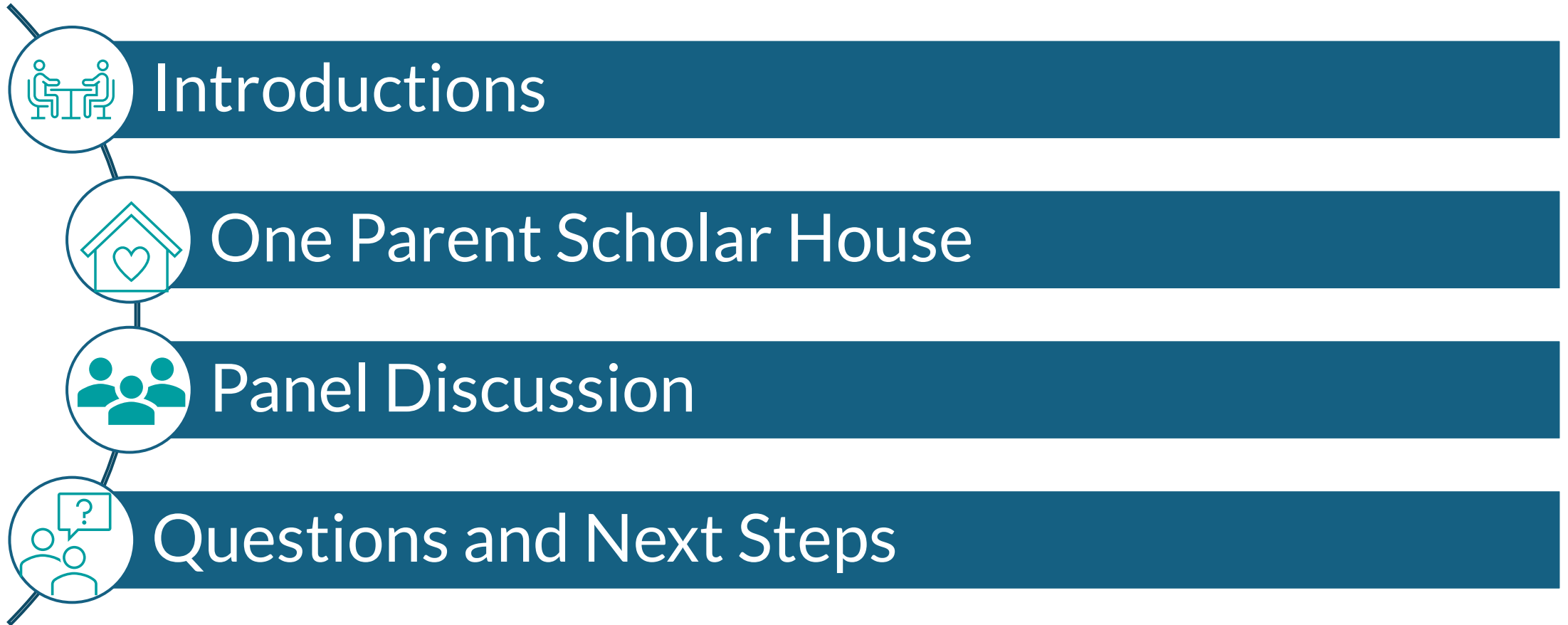
Tracy Teater
Associate Director, Adult Attainment

Student Success Summit

March 26, 2025



Session Overview



Parenting Students

Represent roughly
1 in 5
undergraduate
students

Majority are
women

Older than
traditional
students

More often first
generation
students

More likely to be
veterans than their
counterparts

Have income
below the poverty
level

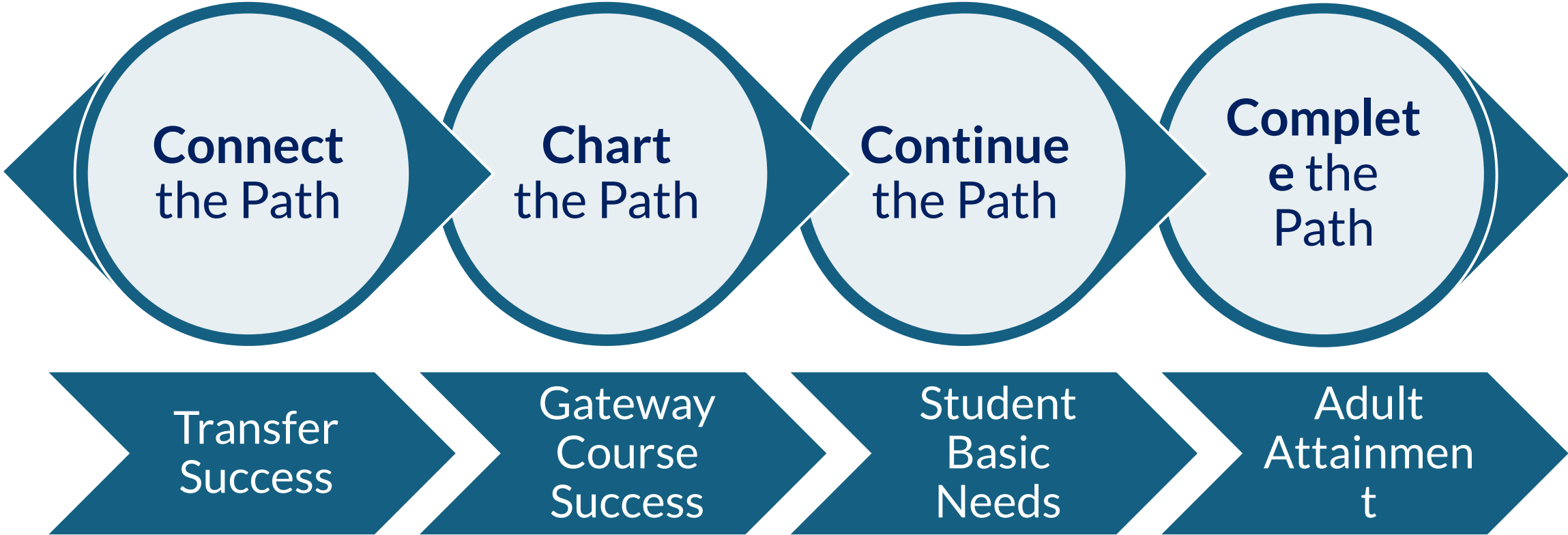
More likely to have
slightly higher
GPAs

Less likely to
graduate

(ACE, 2023)



Student Access & Success Framework



Spotlight:

One Parent Scholar House

Featured Presenter:

Chris Peck, Chief Advancement Officer

Student Success Summit

February 10 – 11, 2025





One Parent SCHOLAR HOUSE

Helping two generations of scholars

1156 Horsemans Lane
Lexington, KY 40504

ONE PARENT SCHOLAR HOUSE

At One Parent Scholar House (OPSH), we help single parents earn a post-secondary education by providing affordable housing for their families.

HISTORY

- In **1986**, Virginia Place opened with 15 apartments on Virginia Avenue.
- In **1995**, the program moved to Horseman's Lane where it occupied seven buildings that included 56 two-bedroom apartments (Virginia Place Phase I).
- In **2006**, three additional buildings were built with 16 two-bedroom apartments and eight three-bedroom apartments (Virginia Place Phase II).
- In **2010**, the Virginia Place Board asked the Hope Center, Inc. to take over the management of the program and its facilities. During this time, the name, *Virginia Place*, was changed to *One Parent Scholar House* to better reflect its purpose.

Mission and Goals

OPSH is a comprehensive self-sufficiency program that includes:

- Affordable housing for 80 single-parent families
- On-site child development for their children
- Support, guidance, and encouragement for the parents as they attend college.
- Workshops
- Counseling
- Special Events
- A community and a supportive environment for parents and their families



Graduates

2020:

8 Certificates
14 Associates
8 Bachelors
1 PhD

2021:

4 Certificates
6 Associates
4 Bachelors
2 Masters

2022:

10 Certificates
11 Associates
5 Bachelors
2 Masters

2023:

4 Certificates
10 Associates
8 Bachelors
3 Masters



One Parent
SCHOLAR HOUSE

Program



Criteria



Program Criteria

1. High school graduate or have a G.E.D certificate
2. Be enrolled full-time in a post-secondary educational institution in a program that takes at least a year to complete
3. Be a single parent with primary custody of your child(ren)
4. Be at least 18 years old
5. Be eligible for the Housing Choice Voucher Program
6. Submit to a Criminal Record Check (Child-related charges will exclude someone from the program – all others are reviewed case by case)
7. Meet Income Requirements: Must submit 6 months of pay stubs/bank statements.
 - If you are not currently working, an individual can show a financial letter of support.

Next Steps

1. Once all the information is provided to OPSH, staff members will schedule an interview.
 - Program staff will communicate program requirements and expectations.
2. Residents will sign a lease and agree to all program requirements.
3. New residents must attend a mandatory orientation

*This process typically takes at least a month from start to finish.

Community Partner

Community Action Council manages the Prep Academy at OPSH. The Child Development Center takes children 6 weeks to age 5. Through its Early Head Start Program, the Community Action Council remains committed to:

- Delivering a comprehensive, high-quality education for children and families.
- Promoting a child's development through services that support early learning, health, and family well-being while engaging parents as partners at every step.
- Preventing, reducing, and eliminating poverty among individuals, families, and communities through direct services and advocacy.



Child Care

- Child Development Center Hours:
Monday – Friday 8:30 am until 5:00 pm.
- Accommodates children 6 weeks to age 5.
- Community Action Council provides educational screenings and assessments as well as parent conferences and home visits.

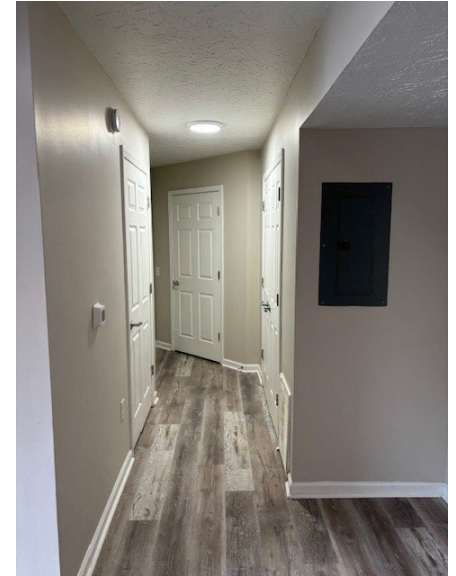


Housing

- Housing component has 72- 2 Bedroom apartments and 8-3 Bedroom apartments.
- Rent is \$150 a month or based on income, resident pays 30% of their income, (if they have income).
- A Security Deposit of \$250 is required.
- The rent is paid in part by The Lexington Housing Authority for each resident.
- The resident is responsible for paying their own electric bill. OPSH pays for water, sewer, and trash.



Housing



One Parent
SCHOLAR HOUSE

Workshops

- Residents are required to complete 4 workshops each year they remain a resident.
- Workshops are offered at least once a month except for December in our Commons Building on a Tuesday, Wednesday, or Thursday evening from 6-7:30 PM.
- Topics include but are not limited to life skills, financial advice/information, parenting tips, cooking on a budget, planned activities for families to do together, etc.



Additional Support

- We can make referrals to several organizations in the community including but not limited to Goodwill Cars to Work Program, New Vista, and local food pantries.
- We receive various donations for our residents including:
 - Food
 - Clothes
 - Household items
 - Books
 - Toys
 - School supplies
 - Diapers, wipes and pull ups
 - Christmas and birthday gifts

To Remain in the Program



One Parent
SCHOLAR HOUSE

Residents must:

- Maintain full-time status as a student in our program
- Maintain a GPA of 2.5 or above.
 - Semester grades must be submitted and reviewed by the Program Coordinator
- Meet monthly with a program coordinator
- Attend 4 workshops every year you are a resident.
 - Ex. Resume building, money management, self-care, career days, etc.
- Residents can stay in the program for a Masters or PA or PhD.

The Result

- Completing the One Parent Scholar House program prepares families to live and work successfully. As each family succeeds and leaves the program another family moves in and begins to profit from this unique, integrated and comprehensive program.

<https://www.youtube.com/watch?v=phPSIlu-Olw>



One Parent
SCHOLAR HOUSE

Success Story

Caci's Story

- When my daughter was born, I regularly worked until 8 PM; by the time I picked her up from daycare, the day was over. I barely saw her and didn't have anything to show for it. I enrolled in the BCTC radiography program and moved to OPSH in August. This is home. I have a washer and dryer, and we each have our room and a living room. It seemed like a palace when we opened the door! I know every person in my building, and we can knock on each other's door if we need something. I'll graduate from the radiography program this Spring, and plan to attend Morehead for the MRI/CT program. I hope to attend medical school for radiology once my daughter is grown.

Ways to Help

- Sort clothes and organize our storage rooms
- Volunteer for special events such as our summer cookout, resource fair, Easter egg hunt, Fall Festival, etc.
- Sponsor a child for their birthday
- Sponsor a family for Christmas
- Bingo with prizes or some kind of game night for the parents
- Teach a life-skills class for the residents



Spotlight:

Supports for Parenting Students

Featured Panelists:

Robyn Moreland, Director, Center for Student Parents at Eastern Kentucky University

Brittany Collins, Student at Eastern Kentucky University

Lamont Campbell, Family Scholar House at Bluegrass Community and Technical College

Autum Bishop, GEAR UP Kentucky

Student Success Summit

February 10 – 11, 2025



Wrap-Up

What resonates with you?

What questions do you still have?

How can you apply something you learned today to support parenting students in your work?

Student Success Summit

February 10 – 11, 2025

