

**The** Kentucky  
Student Success  
**Collaborative**

# Supporting Students with Earned College Credit: Insights and Collaborative Discussions

Chart the Path – Dual Credit x Gateway Course Success

**Student Success Summit**

February 10 – 11, 2025





**The** Kentucky  
Student Success  
**Collaborative**

A PROJECT OF THE KENTUCKY COUNCIL ON POSTSECONDARY EDUCATION

# Agenda



- 4:00- 4:05:
  - Welcome and Overview
- 4:05 – 4:15:
  - Presentation: Dual Credit Trends and Outcomes
- 4:15 – 4:45:
  - Break out room session
- 4:45-4:55:
  - *Break out room wrap up*
- 4:55 – 5:10:
  - Group Share Out
- 5:10 – 5:15:
  - Wrap-Up

# Objectives

## Examine Dual Credit Trends and Outcomes in Kentucky:

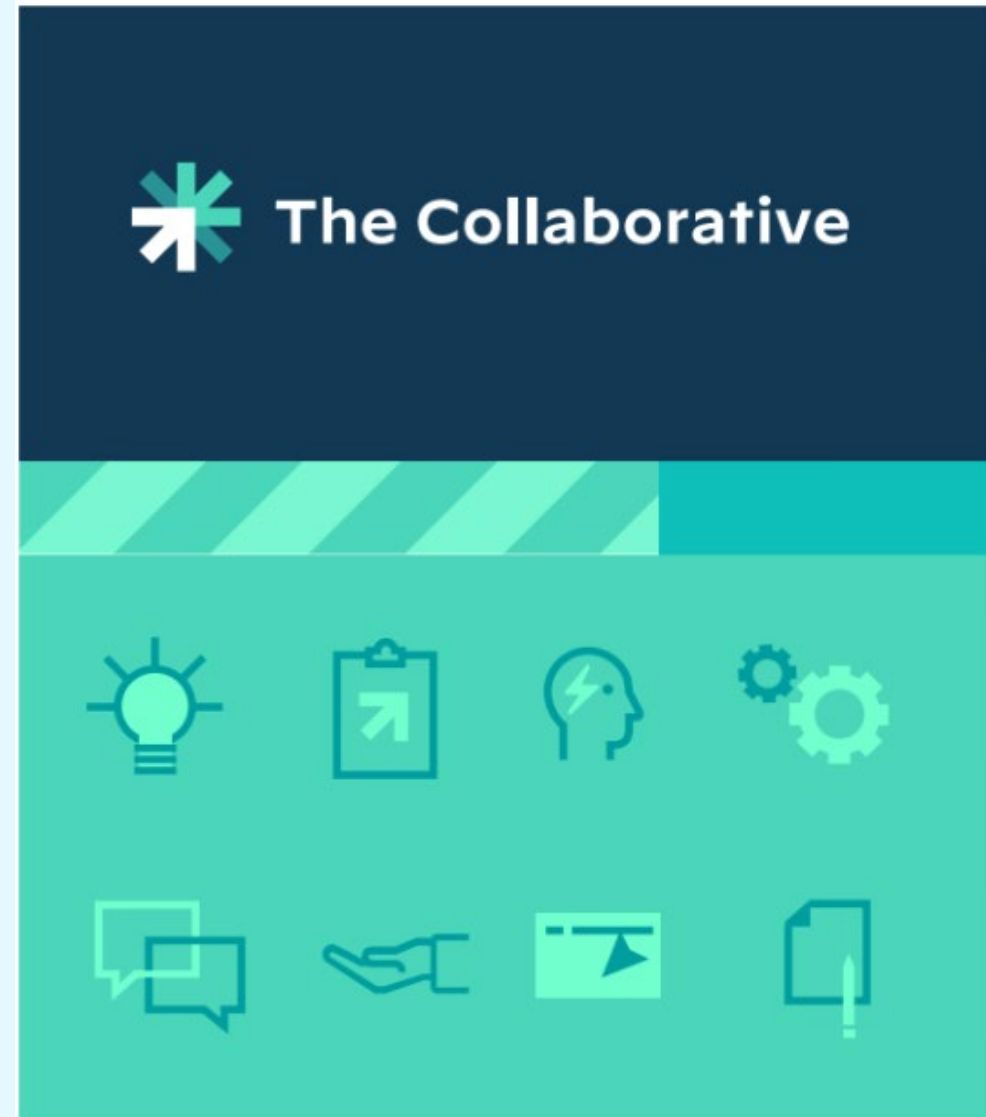
Provide an overview of participation trends and outcomes of dual credit programs on student success.

## Explore Strategies for Supporting Students with Earned College Credit:

Discuss effective strategies, along with practices for easing the transition to college.

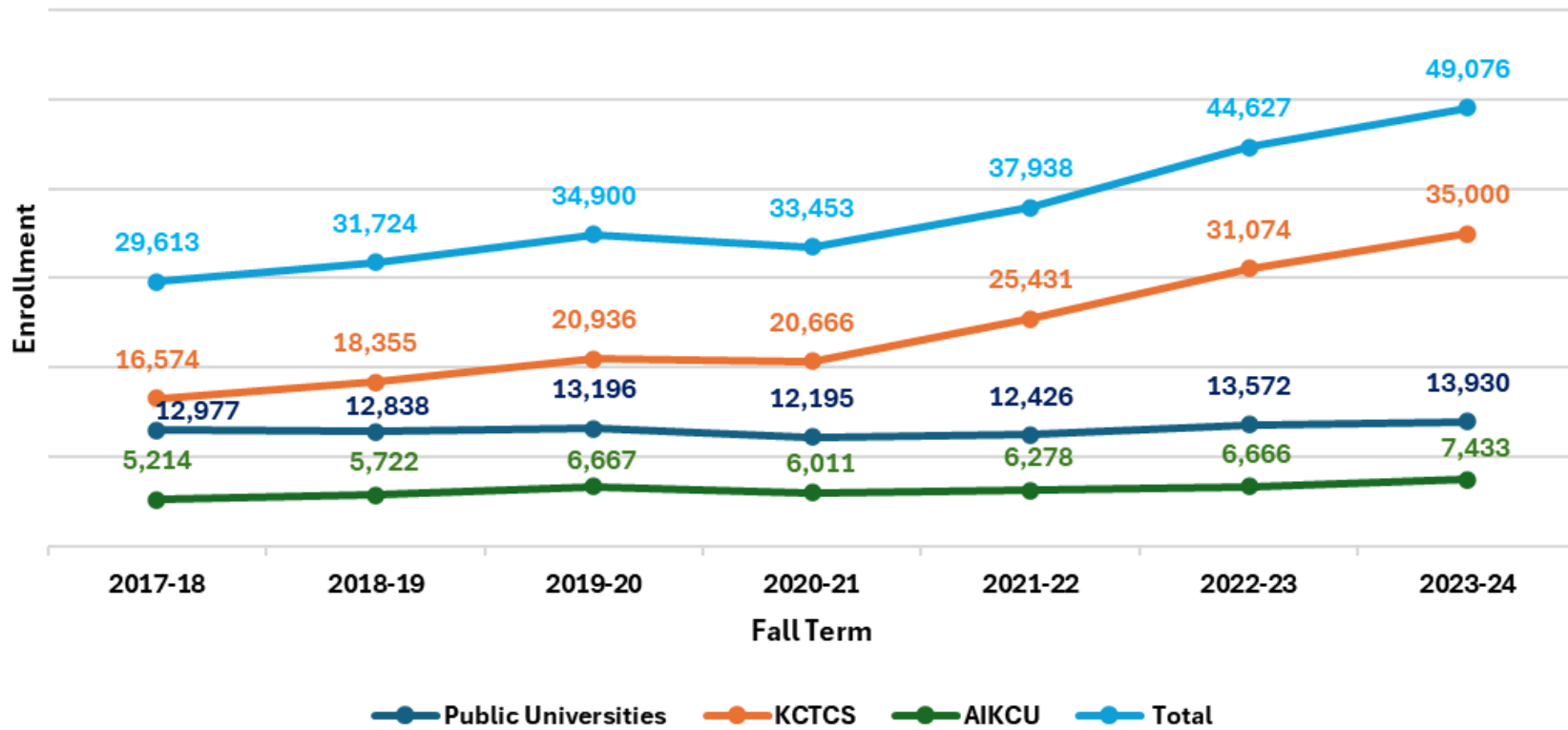
## Collaborate to Share Insights and Identify Actionable Steps:

Facilitate discussions to exchange ideas, share institutional experiences, and develop practical strategies to support students with earned college credit.



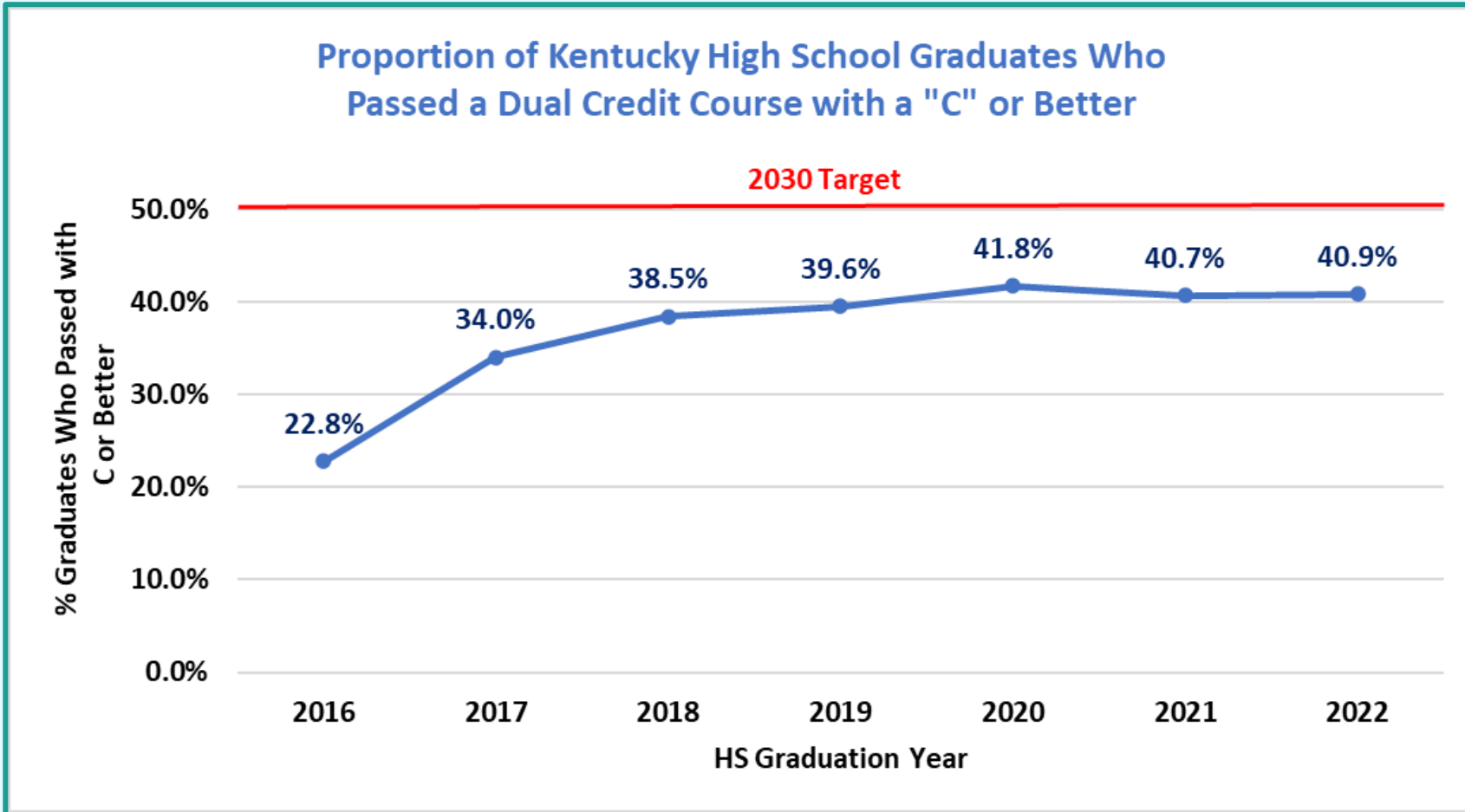
# Dual Credit Participation

Kentucky Dual Credit Enrollment, 2017-2018 to 2023-2024



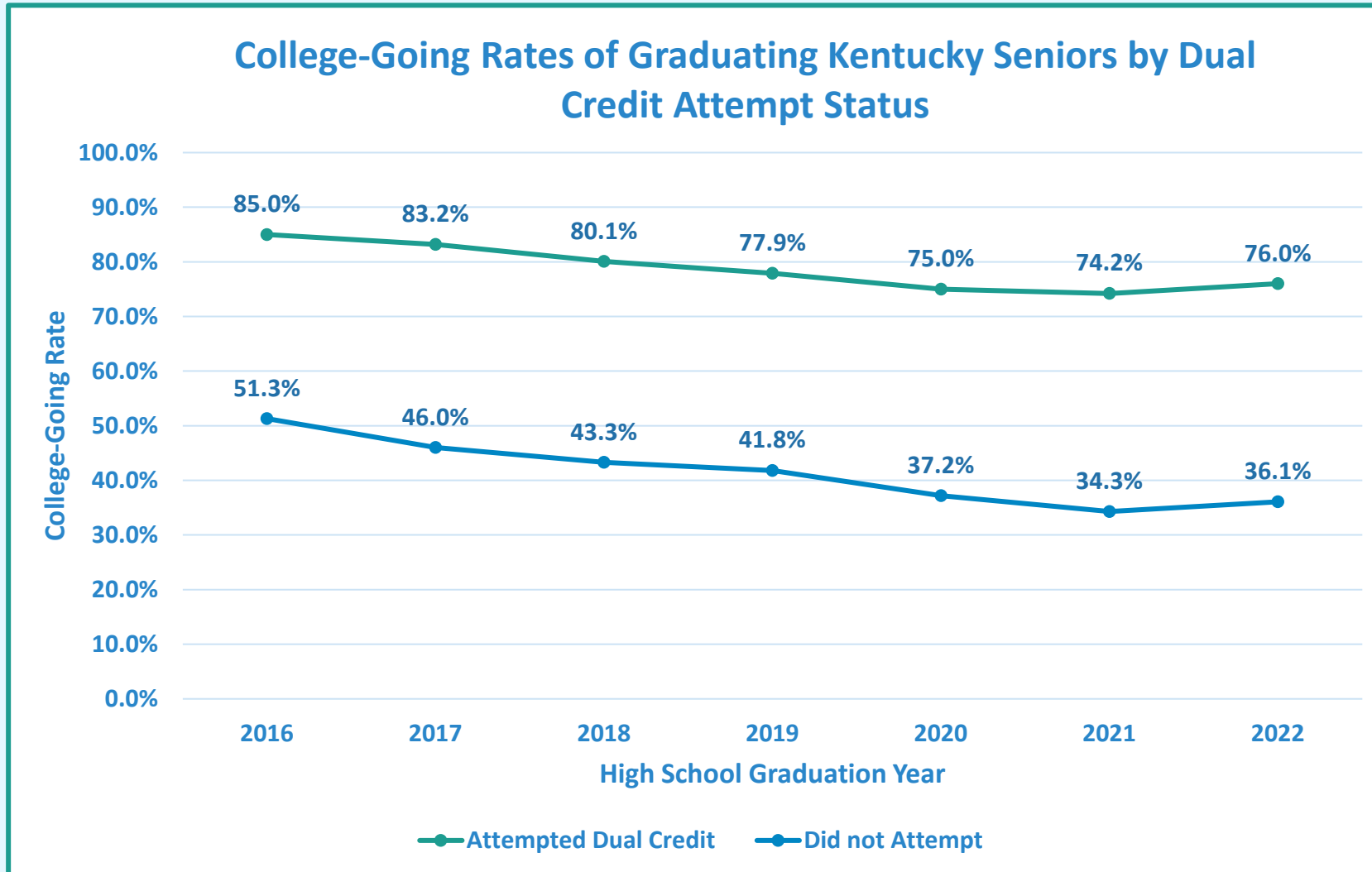
Since 2017-18,  
dual credit  
enrollment has  
grown 65.7%.

# Dual Credit Completion



Since 2016, the proportion of public high school graduates who completed a dual credit course has increased 18.1pp.

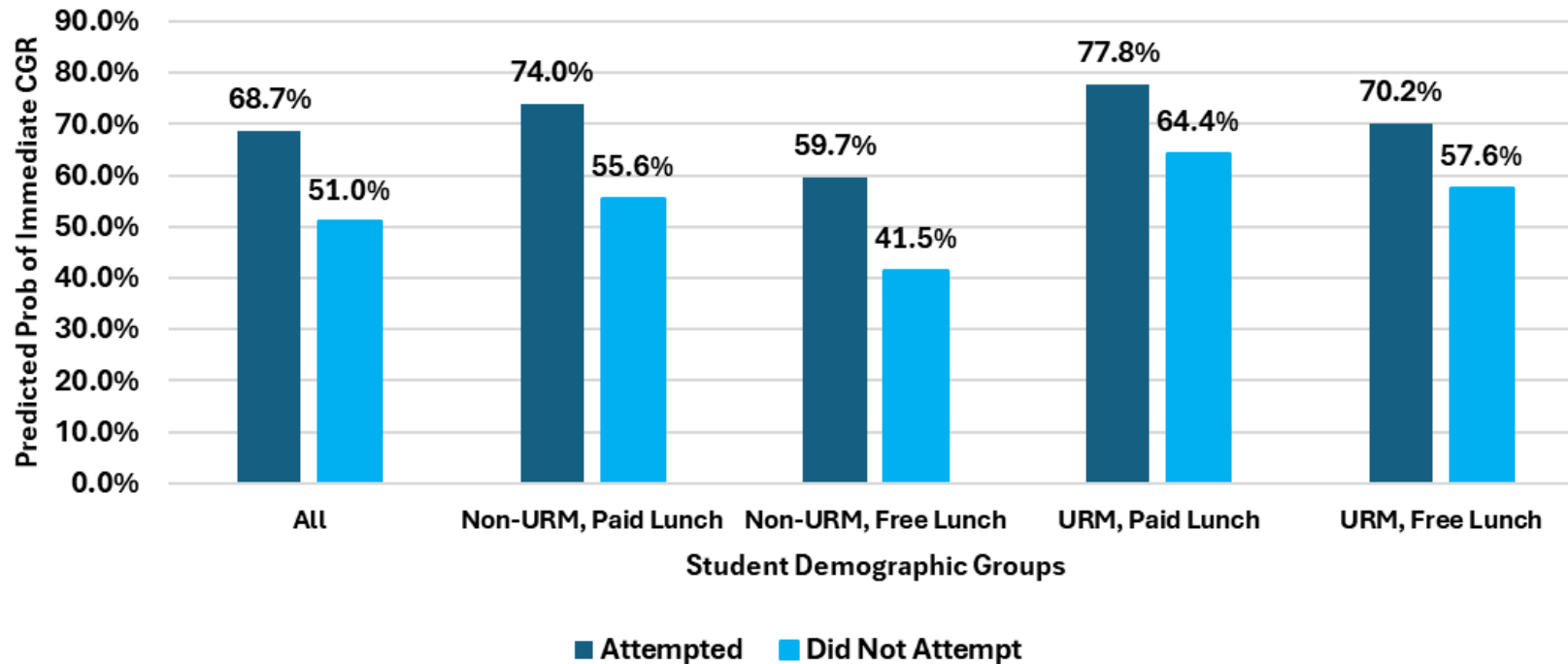
# Dual Credit Participation x College-Going Rates



College-going rates among Kentucky's graduating seniors are much higher for dual credit attempters compared to non-attempters. How much of this is explained by dual credit alone?

# Dual Credit Participation x College-Going Rates

**Predicted Probability of Immediate College-Going  
by Dual Credit Attempt Status, KY High School Grads 2016-2019**



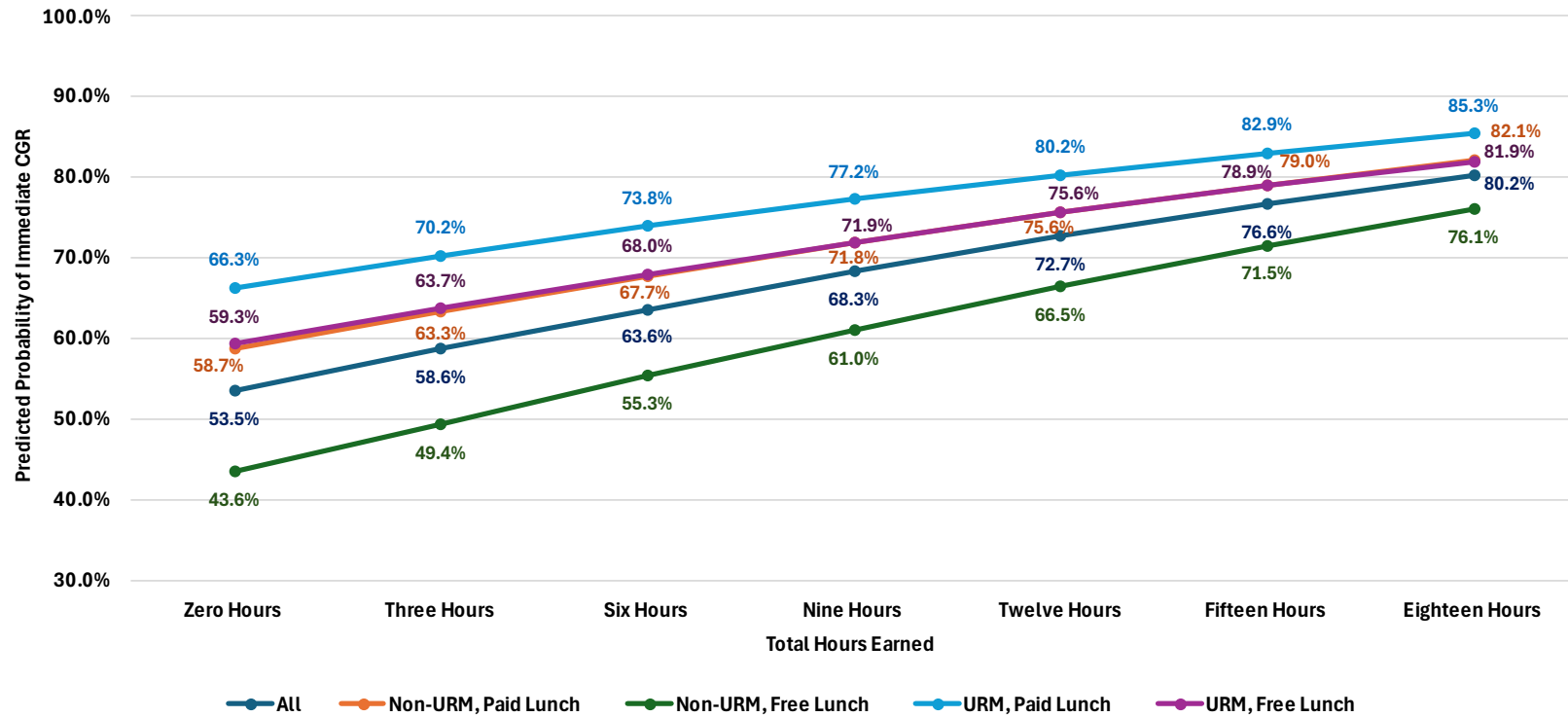
Accounting for other factors, participating in dual credit **increases the likelihood of immediate college matriculation by 12 to 20 percentage points.**



# Dual Credit Participation x College-Going Rates



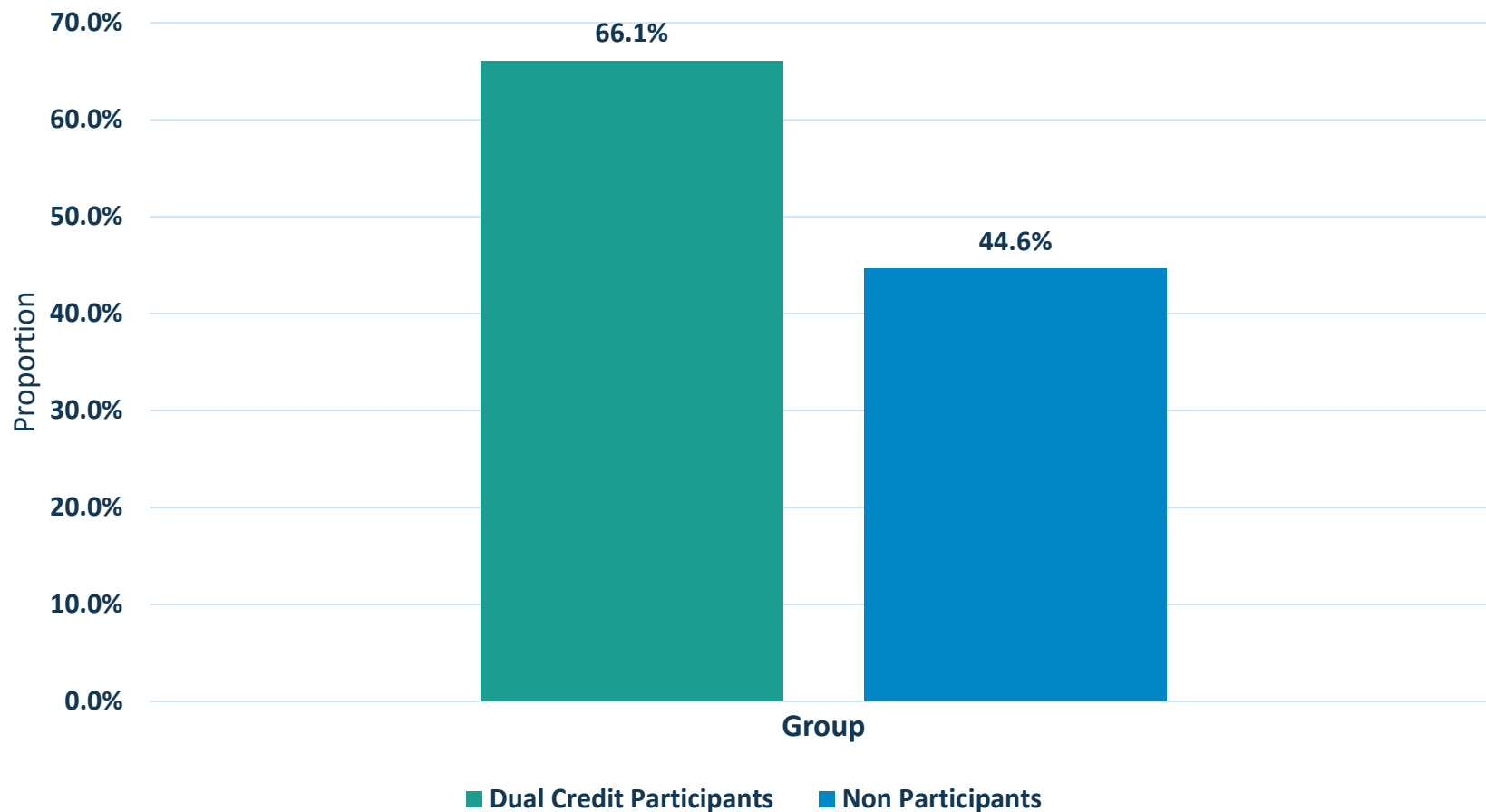
**Predicted Probability of Immediate College-Going  
by Dual Credit Hours Earned, KY High School Grads 2016-2019**



Importantly, as the number of earned dual credit hours increases, across subgroups, the likelihood of matriculation increases substantively.

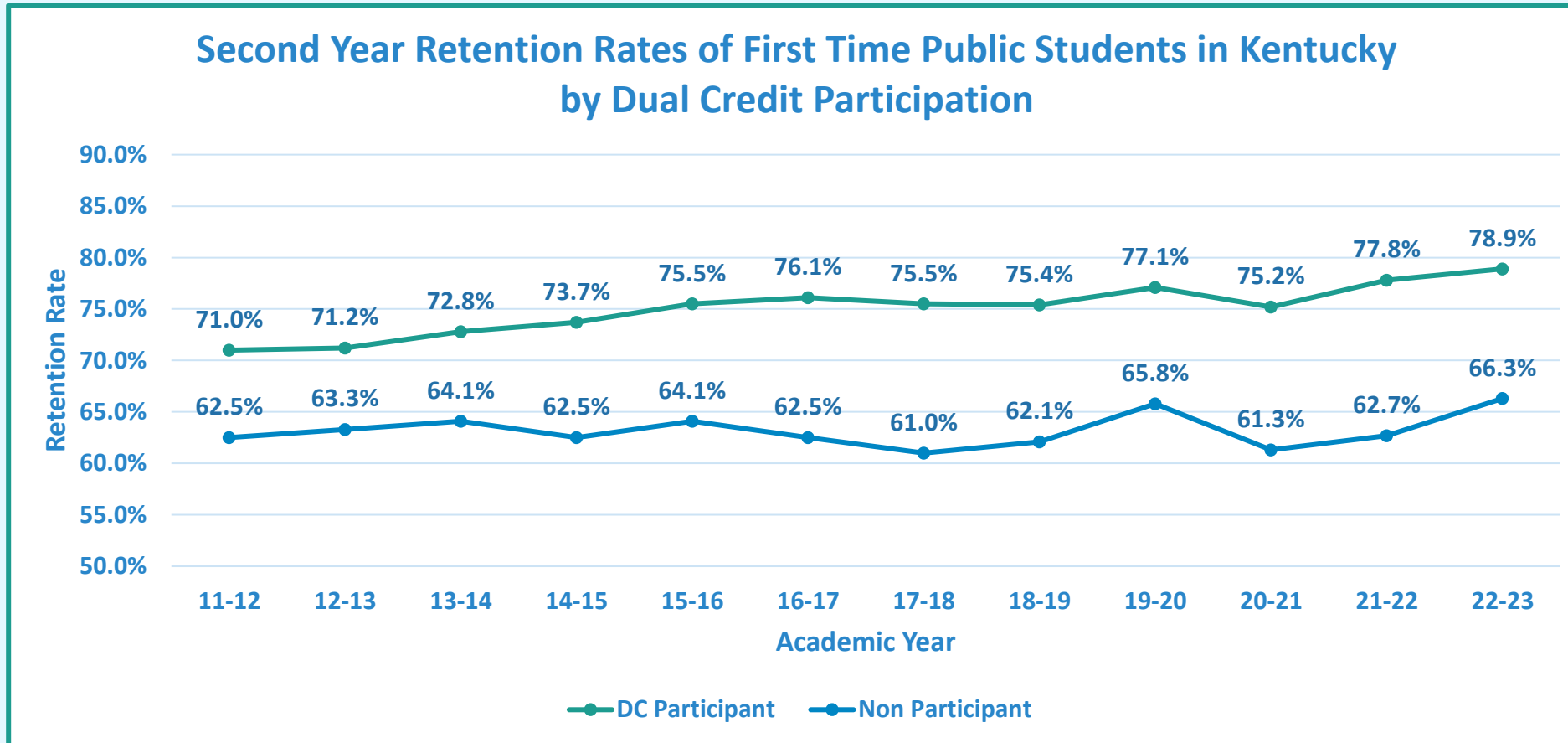
# Dual Credit Participation x Completion

**First Time Students Who Earned Any Credential by Dual Credit Participation, Enrolled 2011-2012 to 2017-2018**



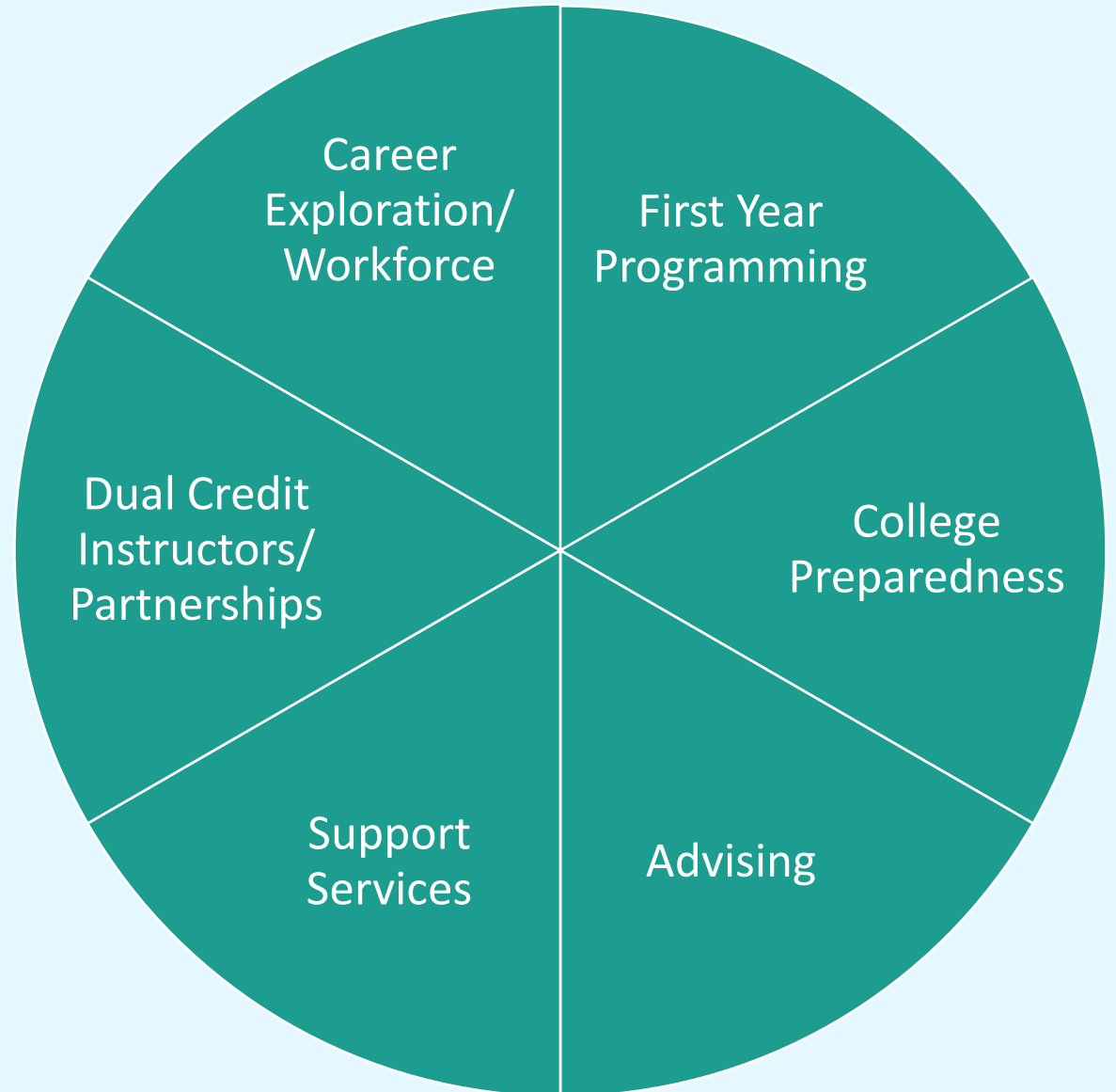
Among first-time students who enrolled between 2011 and 2017, **dual credit participants had a 21.5 pp higher completion rate than non-participants.**

# Dual Credit Participation x Second Year Retention



On average, dual credit participants who matriculated returned for a second year at an **11.8 percentage point higher rate** than nonparticipants.

# Retention Through Support: Addressing the Needs of Students Entering College with Credit



# Breakout Discussion

## Session Flow

- **Select your topic/discussion question of interest.**
  - 30-minute discussion in each breakout room.
  - After the initial discussion, the group facilitator will transition to a **10-minute** group wrap up.
- **Report back to the group:** Facilitators will share insights and opportunities from each table.



# Discussion Questions

Breakout Room	Topic	Group Facilitator	Discussion Question
1	First Year Programming	Trinity Walsh	How can we shift freshman programming to address the needs of students who come with credit?
2	First Year Programming Pt. 2	Ashley O'Neil	How can we support college readiness of students who come with credit? What is the role/right time of the FYS course?
3	College Preparedness	Dee Parker	What is working to support incoming population that has credit hours ?
4	Advising	Kausha Miller	How can we make sure dual credit aligns/ does not duplicate within a student's pathway or program?
5	Support Services	Kanya Allen	How to increase on-campus engagement with student support services (i.e., tutoring, mental health counseling, social, emotional, well-being, belonging support)?
6	Dual Credit Instructors/ Partnerships	Robin Hebert	How can the whole college experience be more baked into the dual credit experience?
7	Improving Success	Shane Redmond	How can institutions support dual credit instructors to address these needs?
8	Career Exploration/ Workforce	John Hall	How can we enhance opportunities for students to explore career pathways while taking dual credit courses, to help them better understand their options?

# Breakout Discussion

30:00

## Session Flow

- **Select your topic/discussion question of interest.**
  - **30-minute discussion** in each breakout room.
  - After the initial discussion, the group facilitator will transition to a **10-minute** group wrap up.

**Report back to the group:** Facilitators will share insights and opportunities from each table.



# Highlights and Opportunities: Group Share-Out

---

DUAL CREDIT X GATEWAY COURSE SUCCESS







## Save the Date

Mark your calendars for these exciting opportunities to connect, collaborate, and advance our shared goals for student success!

### KYCPE, Dual Credit

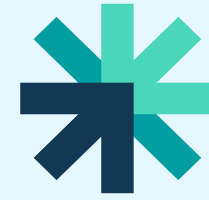
- April 8 - Early Postsecondary Opportunities Webinar Series

### Upcoming Gateway Course Success Community of Practice Dates

- April 10 – Academic Support, Kanya Allen

### Upcoming Gateway Course Success Strategy Initiatives

- April 2025
  - Kentucky Student Success Collaborative- Data Dashboard
- June 2025
  - Faculty Professional Development in Collaboration with Adult Education



**The** Kentucky  
Student Success  
**Collaborative**

# Join us.

Please visit to [kystudentsuccess.org](https://kystudentsuccess.org) to stay up to date on initiatives and opportunities coming soon.