

Kentucky College Coaches *Guiding Students To and Through College Success*

Gayle Hilleke
Executive Director, EngageKY

JANICE FENWICK
Disability Support Services, EngageKY

Student Access Summit
November 17, 2025



AGENDA

Connection

EngageKY's Story

Kentucky College Coaches
Who, What, When,
Where, Why & How

Resources



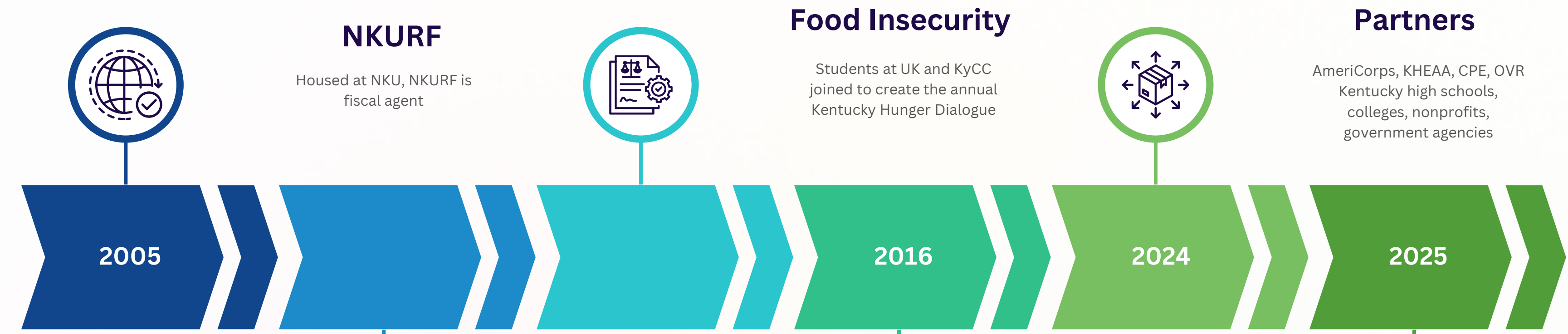
CONNECTION BEFORE CONTENT

Think of someone (something) who was an important coach to you at some point in your life.

If that person (thing) would join you here today, what would they say about the work you are doing now? In what ways would they be proud of you and why?



EngageKY History



Established in 2005

Established as Kentucky Campus Compact by CPE convening KY college and university presidents



NKURF

Housed at NKU, NKURF is fiscal agent



Mission

Kentucky higher education Civic Engagement Network
To support, promote, and find resources for community and civic engagement anchored in Kentucky higher education

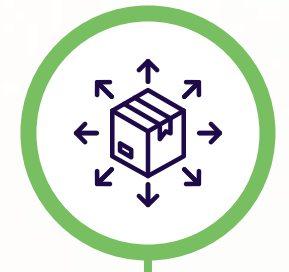
Food Insecurity

Students at UK and KyCC joined to create the annual Kentucky Hunger Dialogue



New Brand

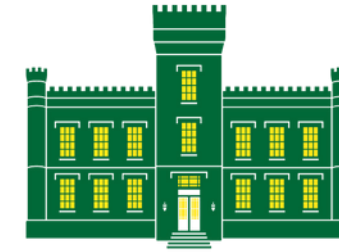
Re-branded as EngageKY



Partners

AmeriCorps, KHEAA, CPE, OVR
Kentucky high schools, colleges, nonprofits, government agencies





KENTUCKY STATE UNIVERSITY



EngageKY Programs







THE KENTUCKY
Hunger Dialogue



What?



THE STUDENTS
First Generation
Low Income
Disabilities

THE COACHES
College Degree
Near Peer
Growth Mindset





DISABILITY SUPPORT SERVICES

- Central point of disability and accessibility expertise across all EngageKY initiatives.
- Build shared frameworks and language around inclusive coaching and service practices.
- Provide resource guidance and training adaptable across various program missions.
- Help ensure EngageKY programs reflect universal access, belonging, and equitable service.





DSS AND KCC

- Train all coaches to identify and respond to accessibility and learning needs.
- New partnership with the Office of Vocational Rehabilitation and their Pre-Employment Training Services (Pre-ETS).
- The EngageKY cohort of KCC members are being trained to be certified Pre-ETS providers.
- Support capacity-building efforts that improve retention, well-being, and student outcomes across all service terms.
- Strengthen relationships between campus disability services offices and coaching sites.





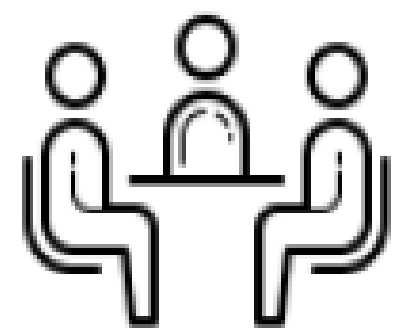
DSS FUTURE INITIATIVES

- KCC members serving at colleges and universities will have the opportunity to be certified Pre-ETS providers.
- Hiring an assistant coordinator to help with research and development of resources.
- In early 2026, EngageKY will launch an app that identifies the disability resources at all Kentucky colleges and universities.



What?

KENTUCKY COLLEGE COACHES



1-on-1 Meetings



School-wide
College Access
Events



Explore College
& Career Paths



College Prep
Support



Support Finding
Financial
Assistance



When?

KENTUCKY COLLEGE COACHES

- Since 2010
- Service year is August 1 through July 31
- Coaches have the same schedule as school faculty and staff
- Coaches may serve up to four terms of service



Where?

KENTUCKY COLLEGE COACHES

- 40 high schools**
- 3 area technology centers**
- 2 alternative high schools**
- 5 two-year community colleges**
- 2 four-year public universities**
- 3 four-year private colleges/universities**



Where?

KENTUCKY COLLEGE COACHES

High School

**Adair County High School
Anderson County High School
Belfry High School
Boyd County High School
Breckinridge County High School
Calloway County High School
Casey County High School
Christian County High School
Danville High School
Dayton High School
Edmonson County High School
Elizabethtown High School**

**Fleming County High School
Floyd Central High School
Gallatin County High School
Holmes High School
Iroquois High School
Knox Central High School
LaRue County High School
Larry A. Ryle High School
McCracken County High School
McCreary Central High School
Meade County High School
Nicholas County High School**

**North Bullitt High School
North Hardin High School
Ohio County High School
Owensboro High School
Powell County High School
Southern High School
Union County High School
Valley High School
Warren East High School
West Carter County High School
Williamstown Sr. High
Wolfe County High School**



Where?

KENTUCKY COLLEGE COACHES

College

- **Ashland Community & Technical College**
- **Bellarmino University**
- **Centre College**
- **Eastern Kentucky University**
- **Gateway Community & Technical College**
- **Kentucky Wesleyan College**
- **Maysville Community & Technical College**
- **Northern Kentucky University**
- **Somerset Community College**
- **West Kentucky Community and Technical College**





KY CENTER FOR STATISTICS (KYSTATS)

The KCC program was established with the goals of **increasing high school graduation rates**, improving **college readiness**, and increasing **college enrollment rates** among mentored students as well as the school as a whole (Hedgebeth, 2016-2017). Reviewing the program for the 2023 AY revealed that:

- GPAs of KCC 11th graders were significantly greater than a cohort of their peers by 0.25 GPA points.
- For KCC seniors, 59.0% attended college in the 2024 AY compared to 49.9% for the similar cohort. This difference was statistically significant.





KY CENTER FOR STATISTICS (KYSTATS)

- Partnership: KYSTATS, Dr. Carolyn Oldham, Senior Evaluation Specialist at the University Kentucky, and University of Kentucky doctoral student Odunayo Omotilewa
- Creating a tool to measure workforce readiness of AmeriCorps members using the National Association of Colleges and Employers' competencies
- Competencies: Career & Self-Development, Communication, Critical Thinking, Equity & Inclusion, Leadership, Professionalism, Teamwork, and Technology



How?



THE KCC APPROACH

Work Pathways
Co-creation
Student Interaction Model



Work Pathways

- Student participating in KCC program
- AmeriCorps member in Kentucky College Coaches program
- AmeriCorps Ambassador in Kentucky College Coaches program
- Jobs at EngageKY:
 - Field Support Specialist
 - Program Manager
 - Program Director
- Jobs at KHEAA:
 - Outreach Counselor
 - Program Manager



Harley Cofield, EngageKY AmeriCorps College Coach Alumni



**“You always
have a seat at
the table, and
what you say
matters.”**

Co-Creation Rationale

- **Alternative narrative to one that relinquishes power to people in positions of authority or leadership.**
- **Reminds us that the people who make up a community are the ones shaping it, for better or for worse.**
- **Confronts people with their own freedom to engage in creating a different possibility (or not).**
- **Affirms that people are the experts of their own lives and everyone has value with gifts to contribute.**
- **Those most impacted by the outcome should be part of the process.**

CO-CREATION PRINCIPLE #4

The small group is the unit of community building.

Curious Questions

- Draw from lived experiences
- Have no right or wrong answer
- Allow us to be surprised
- Awaken the imagination
- Answers can be different from one day to the next



CURIOUS QUESTION

Think about what your life as a teenager was like in high school.

If you wore a backpack to school, what would someone see, hear, or understand about what your life was like? How were those things important to you then?





STUDENT INTERACTION MODEL

- Six easy steps for coaches to establish rapport with students and have a road map for ongoing conversations.
- Based on the EngageKY value of Respect and the belief that each person is the expert of their own life.
- In addition to having a post-secondary plan, our goal is to help students develop their own agency.





BALANCE FEEDBACK COACHING

- A companion to SIM, the Balanced Feedback Coaching is how staff help the AmeriCorps members increase their skills.
- This is part of the pathways development - giving and receiving feedback is a universal element of any job.



Contact us!



Gayle Hilleke

Executive Director

gayle.hilleke@engageky.org



Janice Fenwick

Disability Support Services

janice.fenwick@engageky.org

Resources

Want to learn more about Co-Creation? Check these out!

Block, P. (2009). *Community: The structure of belonging*. Berrett-Koehler Publishers.

EngageKY. (n.d.). *Our story*. <https://inside.nku.edu/engage-ky/about/our-story.html>

Swart, C. (2013). *Re-authoring the world: The narrative lens and practices for organisations, communities and individuals*. Knowledge Resources Publishing.

Symonds, P. (2024, December 2). *5 Key principles of Malcolm Knowles adult learning theory of andragogy & using it in the workplace*. <https://symondsresearch.com/malcolm-knowles-adult-learning-theory/>

