

A background image showing a group of business professionals in a meeting. A man in a suit and tie is on the left, gesturing with his hand. A woman in a grey blazer is in the center, holding a smartphone. Another person is on the right, partially visible. They are gathered around a table with a tablet displaying charts and documents. The text is overlaid on this image.

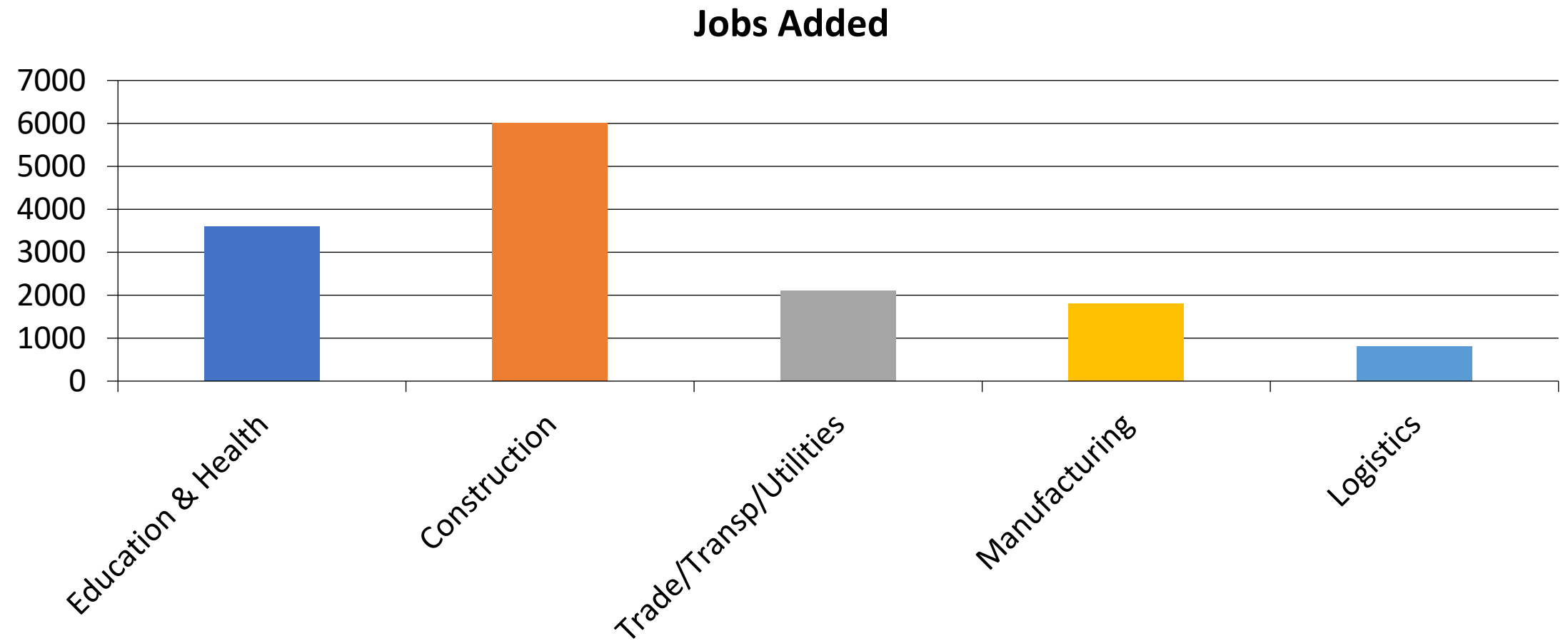
# Where the Jobs Are

**Aligning Career Services with Kentucky's Key Growth Sectors**

**Mary Jackson  
Senior Associate**

**Workforce and Economic Development Initiatives**

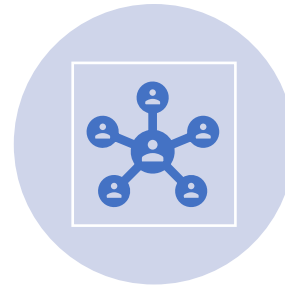
# Kentucky Job Growth: Jan–June 2025



# Sector Spotlight: Healthcare



+1,600 jobs added



High need for nurses,  
health service  
managers, counselors



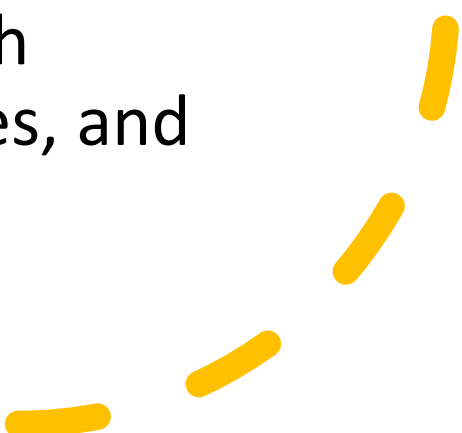
Opportunities across  
rural and urban Kentucky



Growing demand for  
allied health and mental  
health support

A large orange circle on the left side of the slide, partially cut off by the edge.

## Kentucky Initiative: Healthcare Workforce Investment Fund/Healthcare Workforce Collaborative

- Expands healthcare program capacity by funding faculty, simulation labs, and clinical placement solutions
  - Targets high-need roles like nursing, behavioral health, allied health, and direct care professionals
  - Connects colleges with employers to align training with regional workforce demands
  - Supports student success through scholarships, wraparound services, and accelerated credential pathways
- 
- A series of four yellow dashed line segments in the bottom right corner, arranged in a curved, upward-pointing path.

# Sector Spotlight: Manufacturing & Logistics



Over 259,000 employed in manufacturing



UPS Worldport: major logistics employer



Careers: CNC machinists, logistics coordinators, supply chain analysts, etc.



\$40B+ in exports including autos, aerospace, appliances

# Metals Innovation Initiative

---

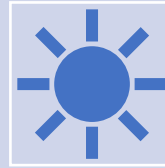
- MI<sup>2</sup> connects colleges and employers to grow Kentucky's high-wage metals manufacturing workforce through training, credentials, and job placement.
- Supports workforce pipelines with internships, certifications, and regional employer collaboratives focused on in-demand skills
- Strengthens Kentucky's economy by aligning education with one of the state's fastest-growing and highest-paying industries.



# Sector Spotlight: Energy



+800 jobs added in  
energy-related fields



Grid modernization  
& renewables



Career paths:  
Lineworkers, technicians,  
energy auditors, Electrical  
Engineers, Power Plant  
Technicians



Green energy rising in  
workforce pipelines

# Sector Spotlight: Education



- +6,000 jobs added in first half of 2025



- High demand: teachers, counselors, postsecondary staff



- KET, GoTeachKY, and local school district initiatives



- Credential support & alternative routes growing



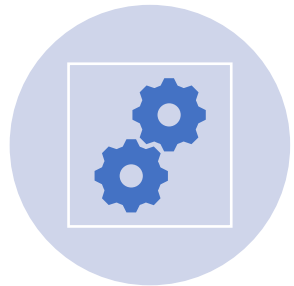
# Sector Spotlight: Aerospace



Kentucky's #1 export:  
\$19B in 2024



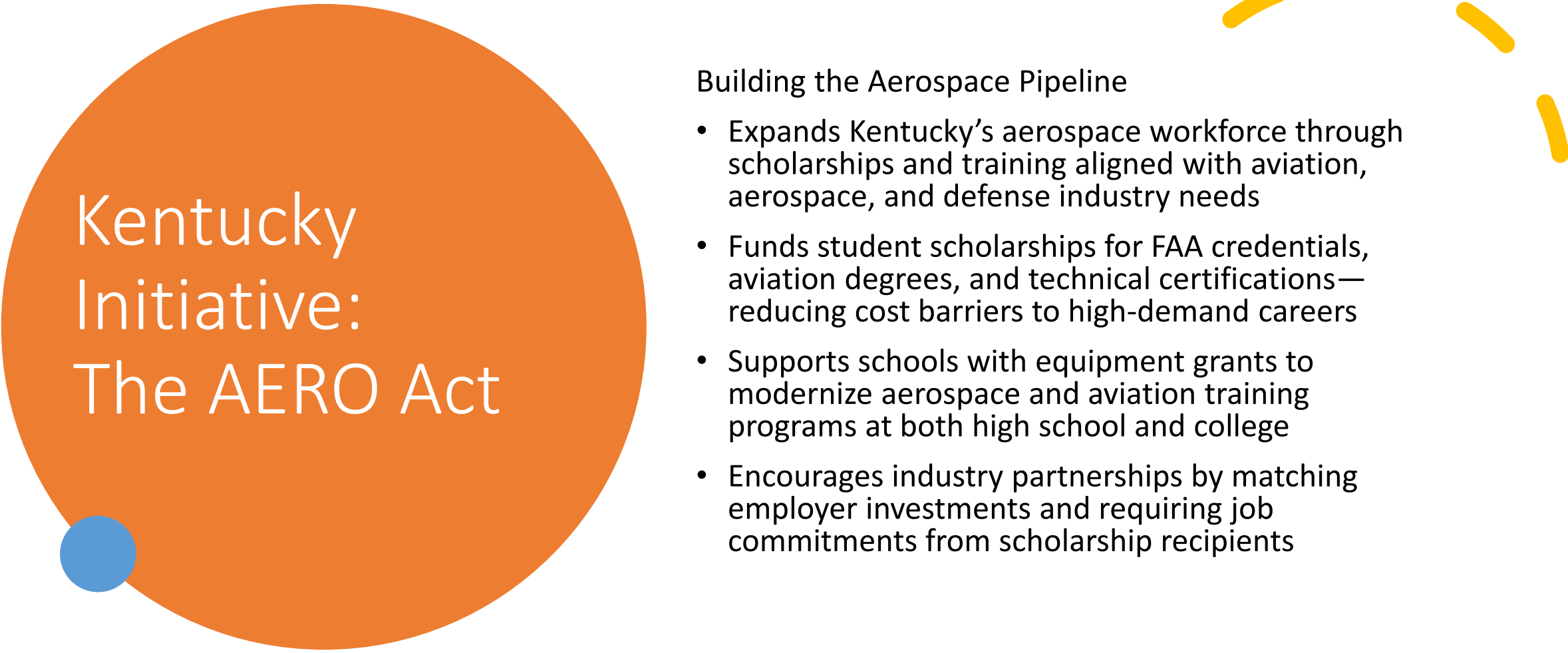
100+ facilities,  
23,000 employed



Roles: avionics,  
quality control,  
engineering



GE Aviation,  
Lockheed, Raytheon  
employers of note



# Kentucky Initiative: The AERO Act

## Building the Aerospace Pipeline

- Expands Kentucky's aerospace workforce through scholarships and training aligned with aviation, aerospace, and defense industry needs
- Funds student scholarships for FAA credentials, aviation degrees, and technical certifications—reducing cost barriers to high-demand careers
- Supports schools with equipment grants to modernize aerospace and aviation training programs at both high school and college
- Encourages industry partnerships by matching employer investments and requiring job commitments from scholarship recipients

# Emerging Sector: Film & Television



Tax credits & lodging incentives attract productions



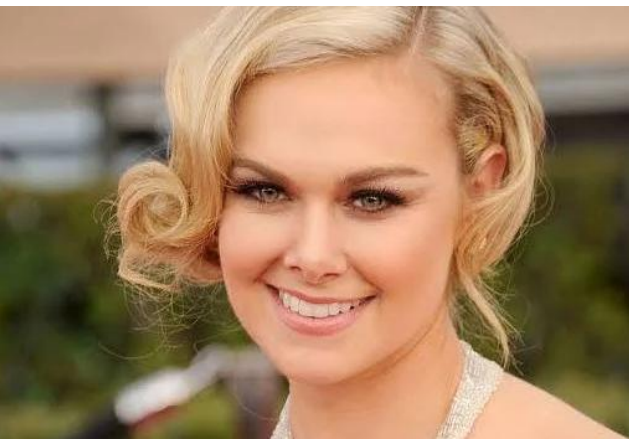
Behind-the-scenes: design, sound, editing, location



Opportunity for creative careers without leaving KY



Kentucky Film Office offers project connections



## Emerging Sector: Film & Television



# Emerging Sector: Film & Television



# Career Services: Your Role



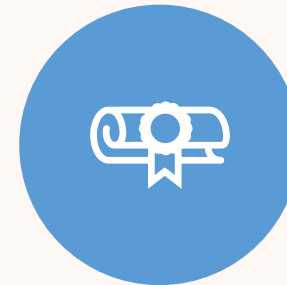
Promote in-demand  
sectors to students



Create employer  
engagement  
pipelines

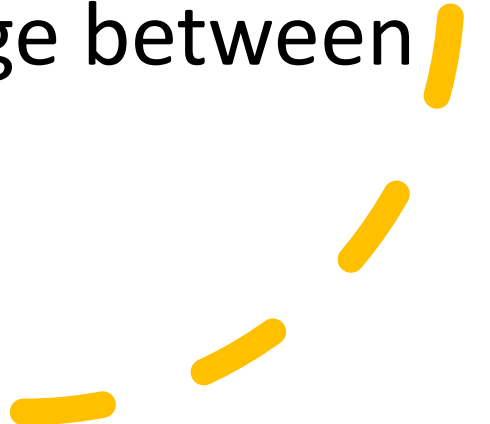


Align programs with  
KYSTATS & workforce  
needs



Facilitate internships,  
panels, credential  
awareness

## Key Takeaways

- Kentucky is adding jobs — fast
  - Healthcare, education, and manufacturing dominate
  - Aerospace and film are emerging fields
  - Career services are the bridge between talent and need
- 

Questions?

THANK YOU!

mary.Jackson@ky.gov



Twitter: CPENews and CPEPres



Websites: <http://cpe.ky.gov> and <http://kyhigheredmatters.org>



Facebook: KYCPE

