



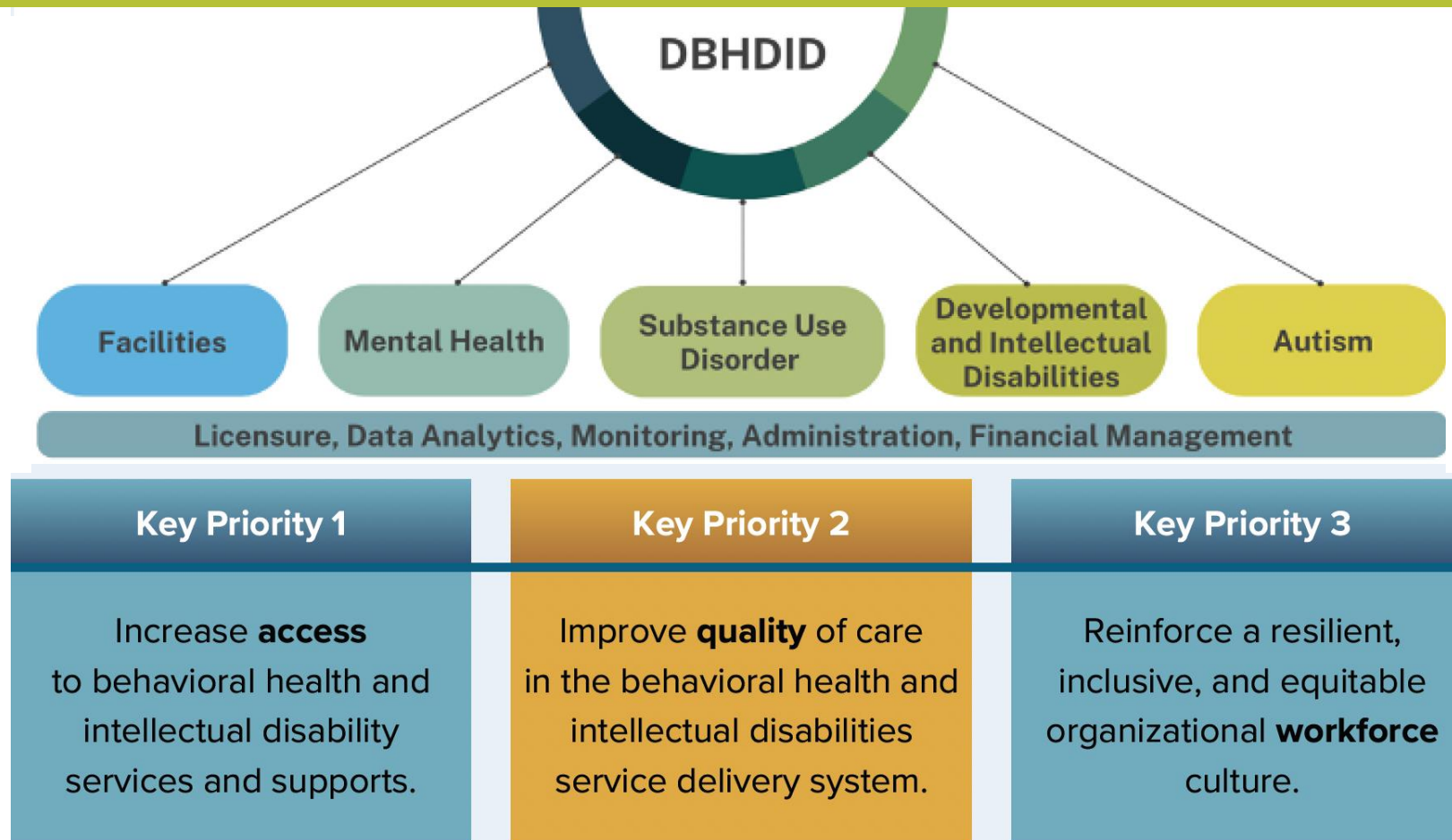
CABINET FOR HEALTH
AND FAMILY SERVICES

Engaging Kentucky's Lived Experience Workforce

Katherine Marks, PhD
Department for Behavioral Health,
Developmental and Intellectual Disabilities

May 14, 2024

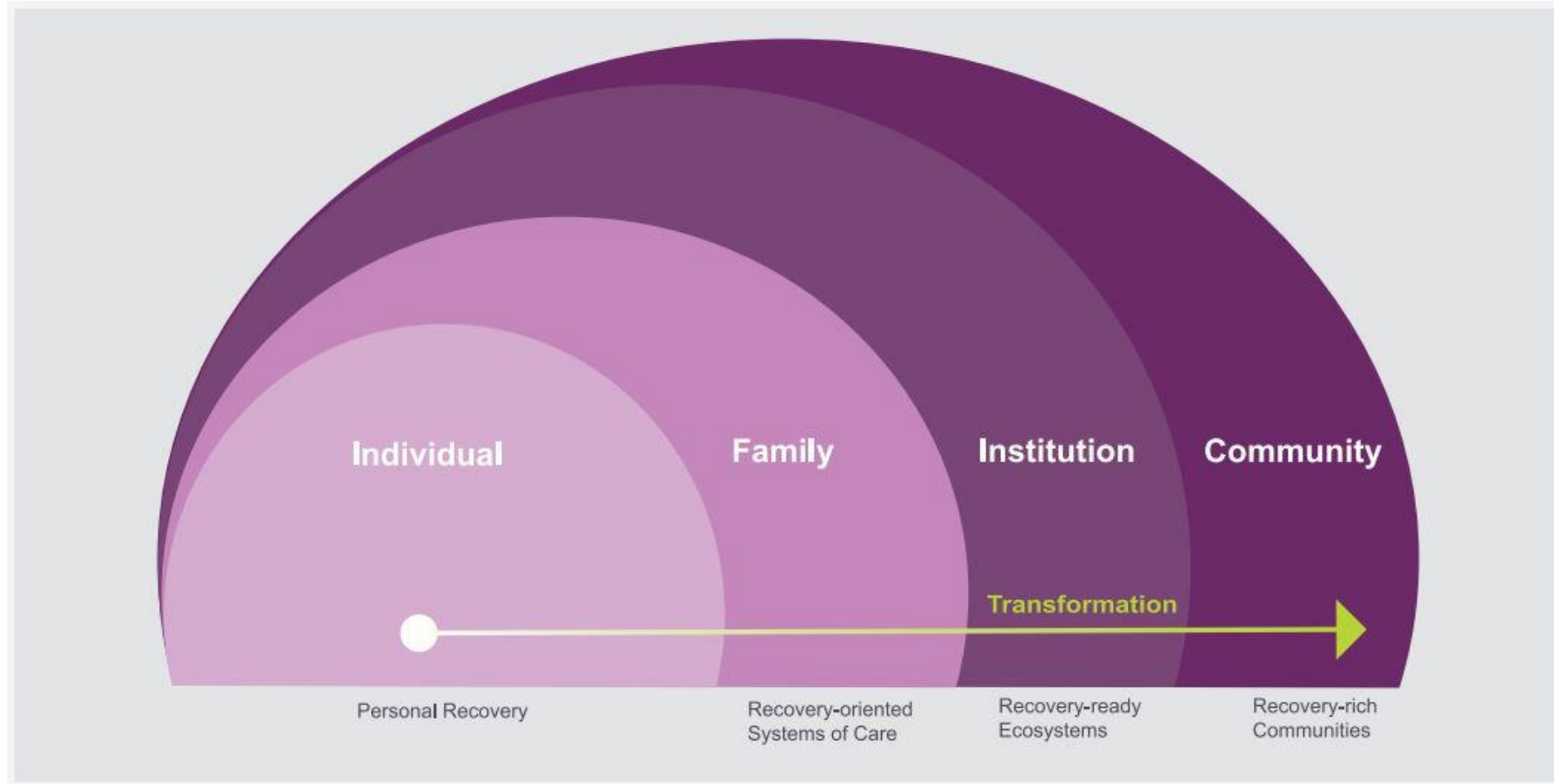
Mission: Promote health, well-being, and resilience for all; facilitate recovery for people affected by mental illness and substance use; and support people with developmental and intellectual disabilities.



CoCREATE Values

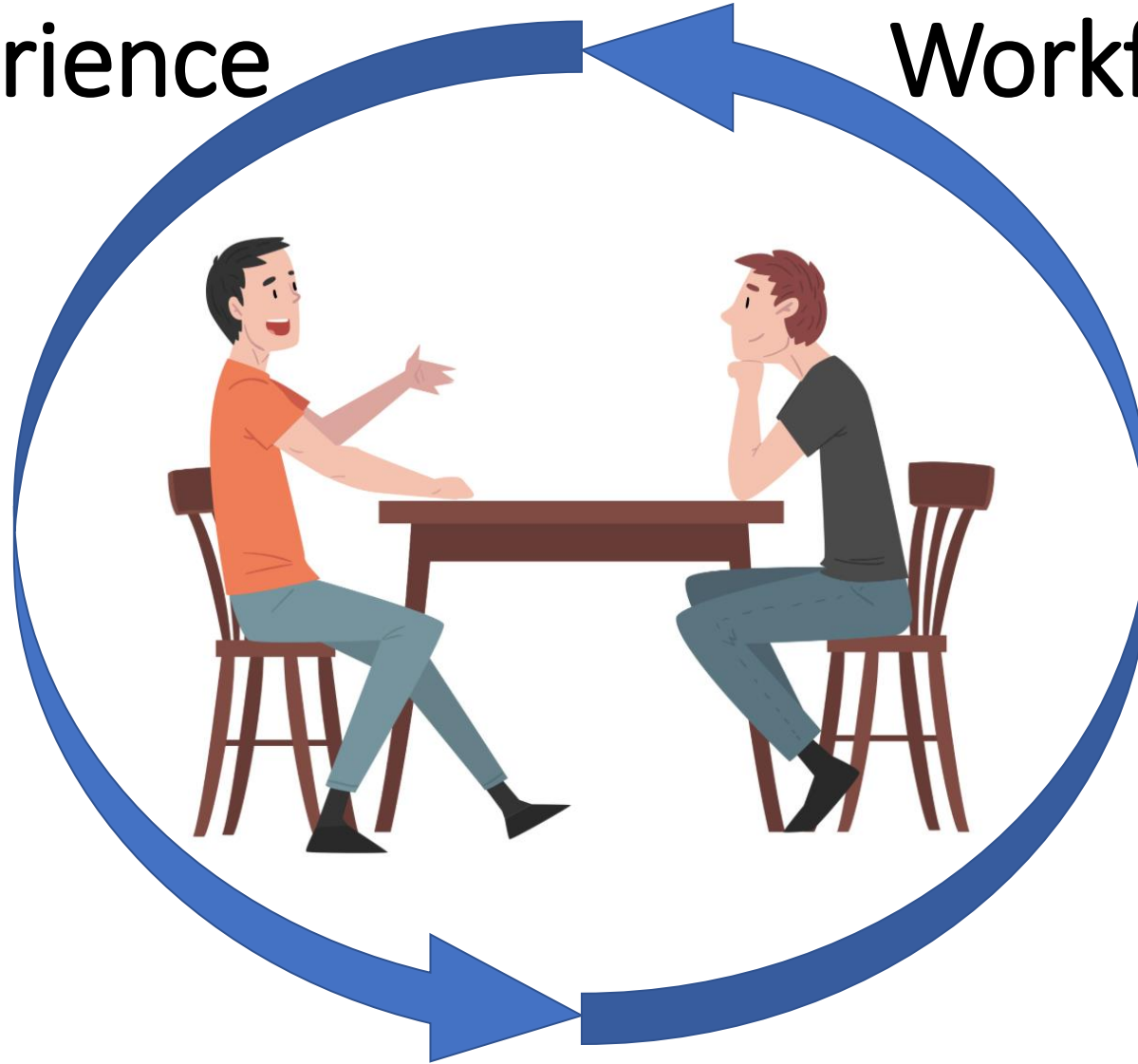


Recovery Systems Transformation



Lived Experience

Workforce



Lived Experience Dimensions

- Hope
- Sense of agency/empowerment
- Commitment to recovery
- Health promoting
- Well-being
- Quality of life
- Social connectedness



PEER RECOVERY
CENTER OF EXCELLENCE

Transformation of Service Provider/Employer

Transformation of Service Provider/Employer

**Hospital
Emergency
Department**

Syringe Service
Program

Rural Health
Clinic

Advisory
Committee

Non-profit Board

Family
Café

Child
Welfare

Community Mental Health

Youth Drop-In

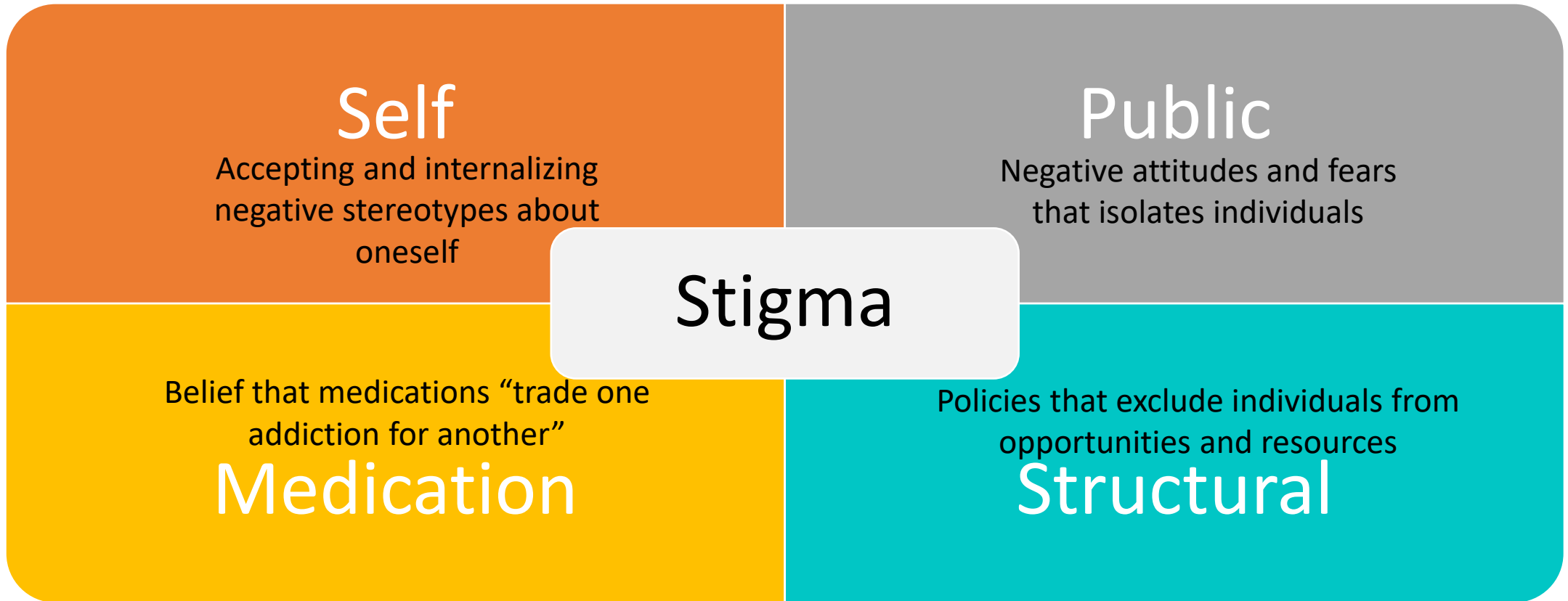
Service Members, Veterans, and their Family

**Federally Qualified
Health Center**

**Recovery Community
Center**

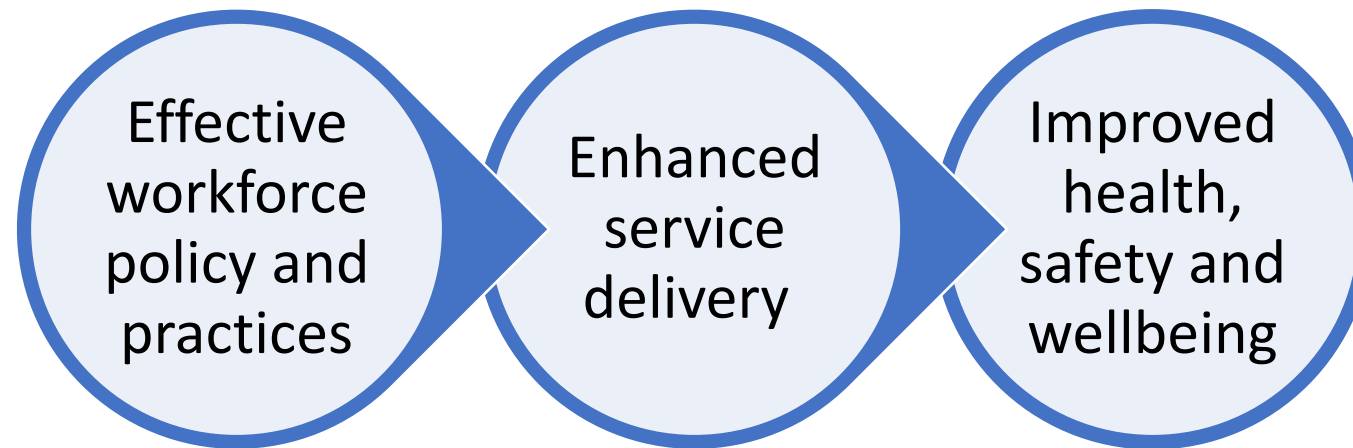
Criminal-Legal System

Types of Stigma



WID Vision

The Kentucky behavioral health, developmental, and intellectual disabilities sectors will **collaborate to explore, design, implement, and evaluate workforce policies and practices** that support service delivery that promotes the health, safety, and wellbeing of all Kentuckians.

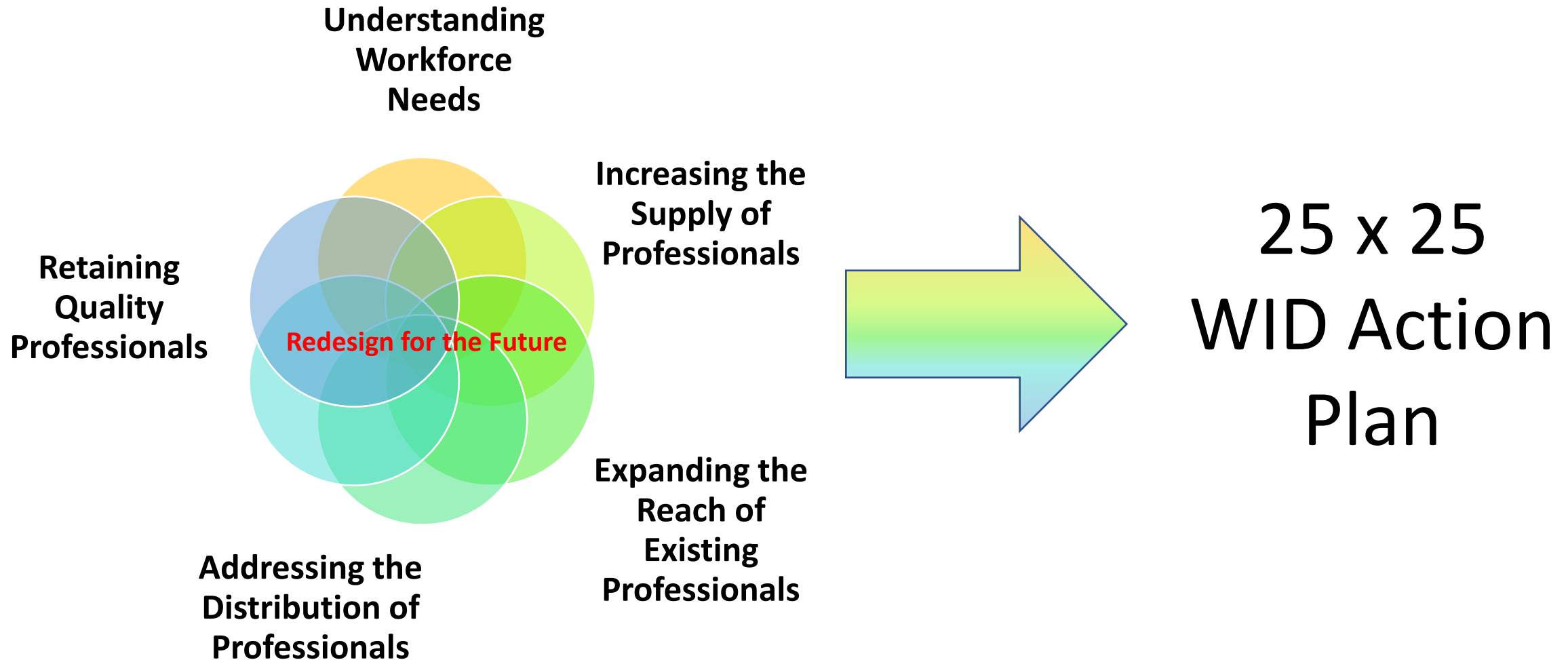


WID Goal

Increase **access to quality care by strengthening the capacity** of the behavioral health and intellectual and developmental disabilities workforce.

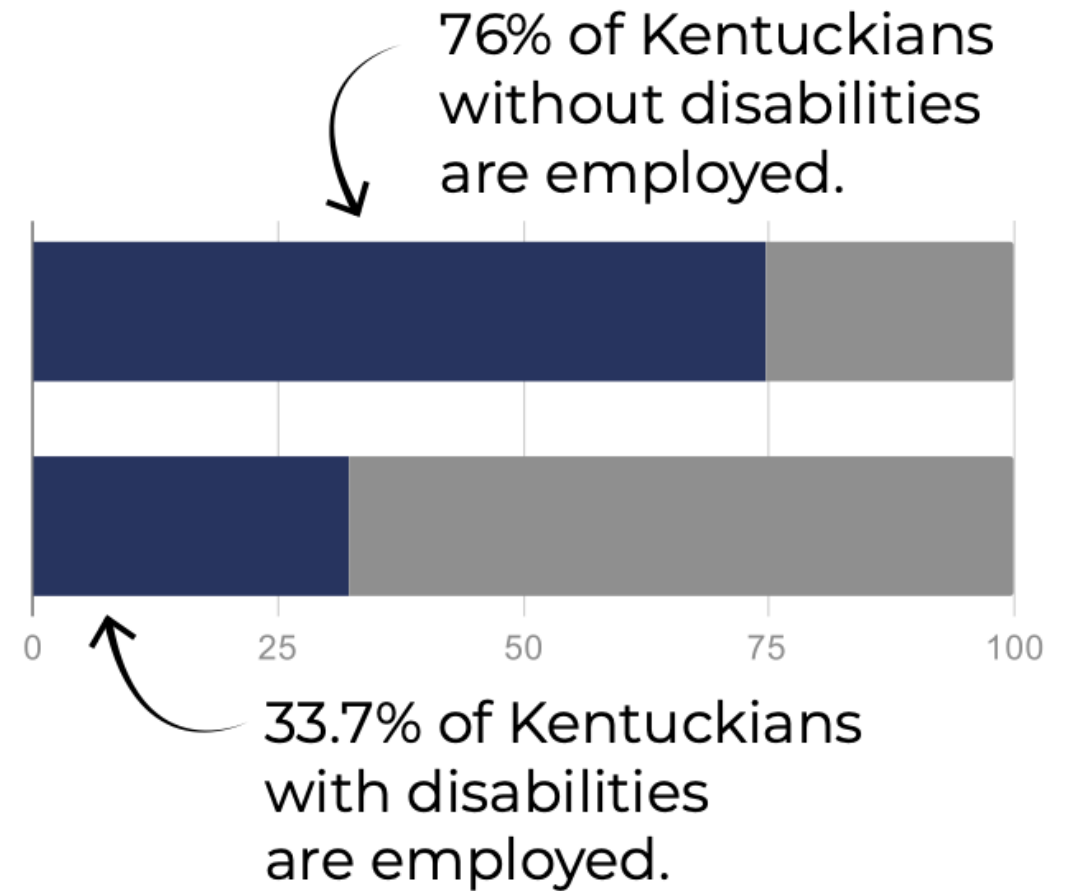
- Create mechanisms to encourage innovation and new approaches;
- Ensure effective communication among partners;
- Design, implement, measure and sustain a WID Action Plan;
- Ensure alignment and coordination with initiatives that complement the WID Action Plan
- Develop recommendations for policy and legislative changes

KY WID Strategic Framework & Action Plan



Employment First

Employment in the general workforce should be the **first** and **preferred option** for individuals with disabilities receiving assistance from publicly-funded systems.



FindHelpNow.org/KY

Start Here To Find Treatment and Recovery Openings

Use this website to find facilities and providers who are actively taking new clients. We work with hundreds of mental health treatment, substance use disorder treatment, naloxone, and recovery housing organizations in Kentucky to bring you up-to-date and accurate information and available openings.

Experiencing a Crisis? Call or text [988](tel:988) or [Live Chat](#).

Need help finding substance use disorder treatment? Have questions about treatment or recovery? Contact our partners at the KY HELP Statewide Call Center to speak with a screening and referral specialist Monday through Friday from 8:30 am to 10:00 pm and Saturday and Sunday from 8:30 am to 5:30 pm EST/EDT at [1-877-318-1871](tel:1-877-318-1871).

Mental Health Treatment



Start Your Search

Substance Use Disorder Treatment



Start Your Search

Recovery Housing



Start Your Search

Naloxone



Start Your Search

TEAM KENTUCKY[®]

CABINET FOR HEALTH
AND FAMILY SERVICES